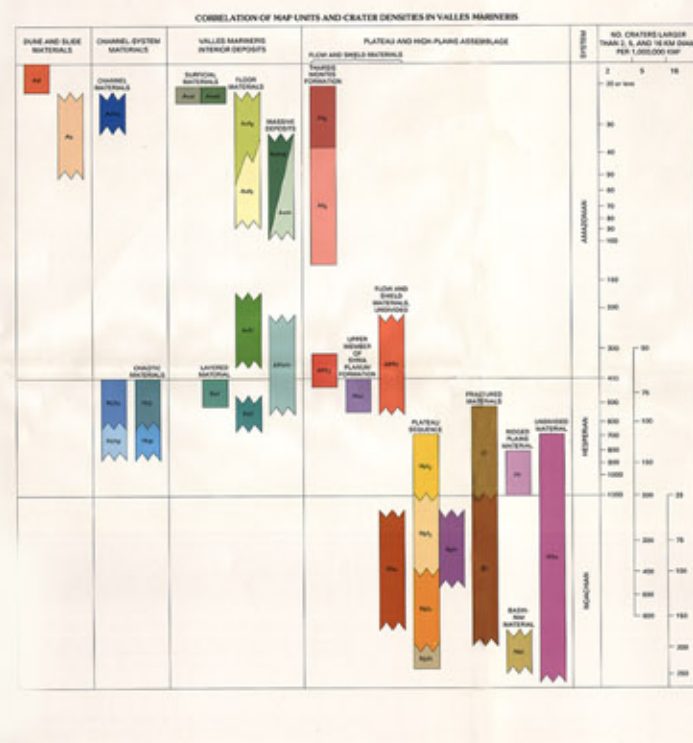


U.S. GEOLOGICAL SURVEY, 1993. This map is a derivative of the geologic map of Mars, East Half, 1:2,500,000, published by the U.S. Geological Survey, 1993. It is a derivative of the geologic map of Mars, East Half, 1:2,500,000, published by the U.S. Geological Survey, 1993. It is a derivative of the geologic map of Mars, East Half, 1:2,500,000, published by the U.S. Geological Survey, 1993.

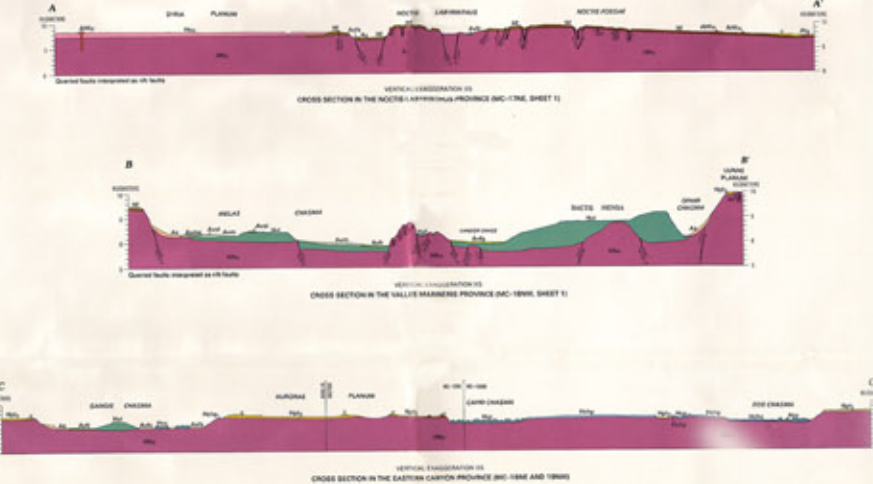
SCALE 1:2,500,000 (1:100,000 at 1:100,000)
MERCATOR PROJECTION

Figure 1-3345 G-2 of the Mars Geologic Atlas, U.S. Geological Survey, 1993. This map is a derivative of the geologic map of Mars, East Half, 1:2,500,000, published by the U.S. Geological Survey, 1993. It is a derivative of the geologic map of Mars, East Half, 1:2,500,000, published by the U.S. Geological Survey, 1993.



DESCRIPTION OF MAP UNITS
This column contains detailed descriptions for various geological units, such as 'DUNE AND SLICE MATERIALS', 'CHANNEL SYSTEM MATERIALS', 'VALLES MARINERIS REFERENCE DEPOSITS', 'PLATEAU AND HIGH PLAINS ASSEMBLAGE', and 'BASIN MATERIAL'. Each description includes information about the unit's composition, structure, and relationship to other units.

PLATEAU AND HIGH PLAINS ASSEMBLAGE
This section provides a detailed description of the Plateau and High Plains Assemblage, including its various components and their geological characteristics.



GEOLOGIC MAP OF THE VALLES MARINERIS REGION, MARS (EAST HALF)
By
Nanci E. Witbeck, Kenneth L. Tanaka, and David H. Scott
1991