

W I S C O N S I N

# STATE OF MICHIGAN

Scale 1:500,000  
1 inch equals approximately 8 miles



Datum is mean sea level  
Compiled, edited, and published by the Geological Survey, 1927 North American datum  
 Lambert conformal cone projection based on standard parallels 33° and 45°

**LEGEND**

- State capital
- County seat
- City, town, or village
- Schedular service airport
- Build-up area shown for towns over 10,000 population
- National park
- National wildlife refuge
- Interstate Highway
- U.S. Highway
- State Highway
- Other principal roads
- Railroad
- Canal
- Water transportation

**SOURCE DATA**

- U.S. Dept. of the Interior-Geological Survey topographic maps
- U.S. Dept. of the Interior-Geological Survey topographic maps

**BASE MAP**

1:500,000

**POPULATION KEY**

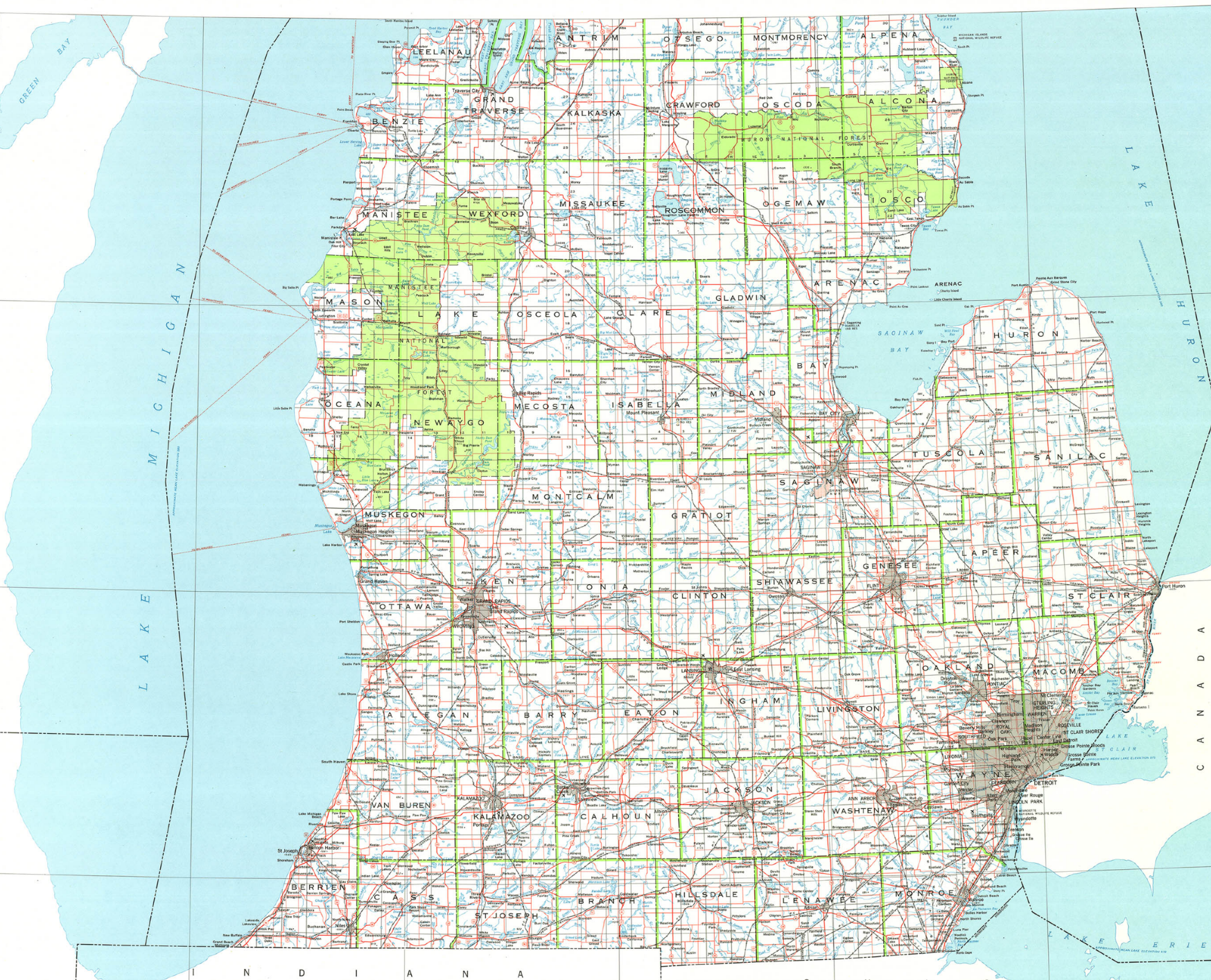
- DETROIT: more than 250,000
- GRAND RAPIDS: 100,000 to 250,000
- Ann Arbor: 50,000 to 100,000
- Flint: 25,000 to 50,000
- Other: 10,000 to 25,000
- Other: less than 10,000

Population indicated by size of letters

FOR SALE BY U.S. GEOLOGICAL SURVEY, DENVER, COLORADO 80202, OR RESTON, VIRGINIA 20192  
CORRECTED BY 1970  
EDITION OF 1970

I L L I N O I S

I N D I A N A O H I O



L A K E H U R O N  
L A K E S T. C L A I R  
L A K E E R I E  
C A N A D A