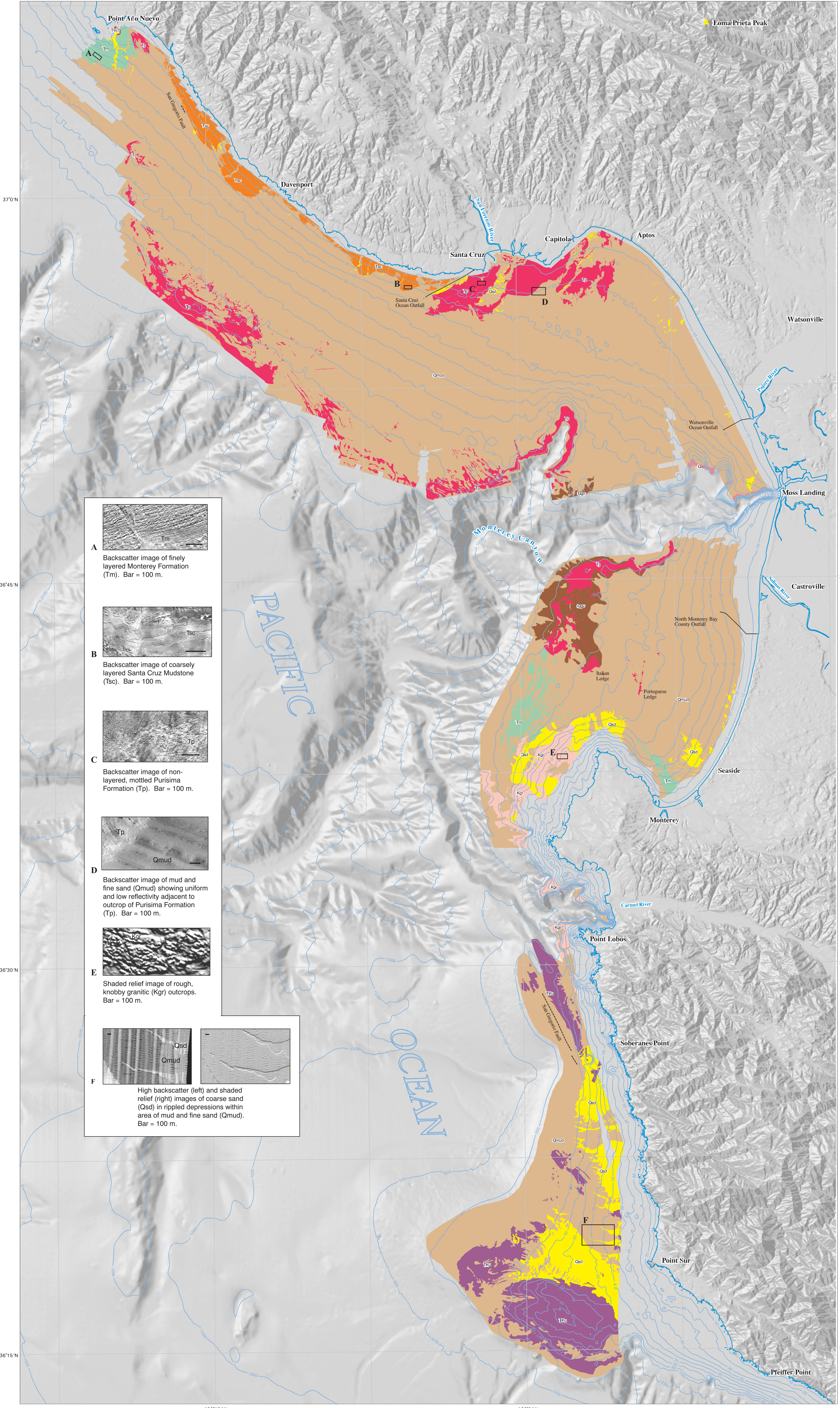


122°15'W 122°0'W 121°45'W



DESCRIPTION OF MAP UNITS

Rock Outcrops	
Ca	Aromas Sand (Pleistocene)
Tp	Purisima Formation (Pliocene and Miocene)
Tm	Santa Cruz Mudstone (late Miocene)
Tm	Monterey Formation (Miocene)
Va	Vaqueros(?) Formation (Miocene and late Oligocene)
South of Monterey Canyon	
Ticr	Rocks of Sur Platform (Tertiary and Cretaceous)—probably Franciscan Metamorphic Complex (Cretaceous)
Kg	Granitic rock (Late Cretaceous), predominantly porphyritic granodiorite
Other Bottom Types	
Qmud	Mud and fine sand (Quaternary)
Qsd	Coarse sands (Quaternary)
Qgp	Relict gravels and sands (Quaternary)

--- San Gregorio Fault, modern seafloor expression

The continental shelf of the greater Monterey Bay area has been surveyed using various techniques to give seafloor acoustic imagery from Point Año Nuevo on the north to Point Sur on the south. This map is an interpretation of this acoustic imagery in terms of bottom type. The acoustic imagery can be accessed via <http://TerraWeb.wr.usgs.gov/TRS/projects/MontereySonar>. Where bedrock is exposed on the seafloor, we have identified the outcropping rock type. Since the acoustic techniques cannot resolve sediment thicknesses less than about 1 m, it is possible that some of the rock outcrops are, in fact, covered by as much as 1 m of modern sediment. However, where photographic evidence is available, our interpreted outcrops are found to be uncovered.

To produce the seafloor imagery on the continental shelf north of Monterey Canyon, towed-fish side-scan sonar systems were deployed from the *R/V David Johnston* of the U.S. Geological Survey and the *R/V McArthur* of the National Oceanic and Atmospheric Administration. To aid in the interpretation of seafloor materials on the northern shelf, we also collected high-resolution seismic-reflection profiles using a surface-towed 1-kHz boomer as sound source and a 10-m streamer as receiver. Lines were spaced 150 m apart on the inner Santa Cruz shelf and 400 m apart on the mid- to outer-shelf. Differential global positioning system (GPS) navigation was used on all acoustic survey lines, providing boat-position accuracy better than 10 m. On the northern shelf from the sheltered area around Santa Cruz northwest to Point Año Nuevo, the innermost survey lines were run into water depths as shallow as 5 m. However in most other areas, shallowest lines were at about the 10-m isobath, leaving a significant data gap to the shoreline.

On the shelf south of Monterey Canyon, two surveys were conducted with hull-mounted multibeam swath-bathymetry/backscatter systems. The first survey used a Simrad EM1000 system on the *R/V Pacific Hunter* of California State University, Humboldt. The second survey used a Simrad EM300 system on the *R/V Ocean Alert* (contracted through the University of New Brunswick and C&C Technologies in cooperation with the Monterey Bay Aquarium Research Institute). These systems recorded both water depth and acoustic backscatter from the seafloor. Line spacing varied to accommodate the variation in seafloor coverage afforded by the systems that image swaths averaging about 5 times water depth. Nearshore coverage extended shoreward to the 20-m isobath along the coast between Monterey and Moss Landing and to approximately the 50-m isobath around and south of the Monterey Peninsula.

The side-scan sonar mosaics on the shelf north of Monterey Canyon have a pixel resolution of 0.4 m for the inner shelf and 0.8 m for the outer shelf. Although this pixel resolution allows us to resolve relatively small features on the seafloor, the accuracy of pixel location is considerably poorer than this due to inaccuracies in navigating the fish towed behind the ship for the northern surveys. The southern-shelf data, which were collected with hull-mounted systems, were processed at pixel resolutions of 2.5 m for backscatter and 5 m for bathymetry. The estimated navigational accuracy in pixel location is 50 m for the northern shelf data and 10 m for the southern shelf data. See Eittrheim and others (in press) for a fuller discussion of the navigational accuracy and acoustic systems.

Based on the acoustic imagery, boundaries were drawn between areas interpreted as different bottom types. In general, mud produces a low-reflectivity bottom, whereas outcropping rocks and coarse sand have high reflectivity (fig. D). Sands show uniform reflectivity whereas rock outcrops display geometric patterns that are associated with layering, jointing, faulting and folding (figs. A, B). Granitic rocks show non-layered knobby patterns associated with weathering and jointing style (fig. E). Coarse sands usually occur in shallow troughs (fig. F) and display 1-m wavelength ripples where high-resolution data (better than 1-m per pixel) are available.

Interpretation was done at the scale of 2.4 m per pixel. At an image resolution of 72 dpi, common to most video screens, this represents a scale of 1:6,800. We emphasize that the distributions of bottom types are based largely on the acoustic imagery and not on direct samples. However, numerous sample identifications, mostly from rocks dredged from the upper continental slope and canyon walls (McCulloch and others, 1985; Stakes and others, 1999), seafloor sediment samples and published descriptions of the seafloor environment (Edwards, in press; Galliher, 1932), and samples collected by ROV (remotely operated vehicles; H.G. Greene and D. Stakes, MBARI, personal communication) support the interpretations. Most importantly, outcrops directly onshore were often used to identify the inner-shelf outcrops (Clark, 1981; Brabb, 1989; Dibblee, 1999; Clark and others, 1997). Our interpretations are largely in concert with those of McCulloch and Greene (1989), who presented a regional interpretation of the geology of the California continental margin.

References Cited

Brabb, E.E., 1989. Geologic map of Santa Cruz County, California. U.S. Geological Survey Miscellaneous Investigations Series Map I-1905, scale 1:62,500.

Clark, J.C., 1981. Stratigraphy, paleontology, and geology of the central Santa Cruz Mountains, California Coast Ranges. U.S. Geological Survey Professional Paper 1168, 51 p., map scale 1:24,000.

Clark, J.C., Dupé, W.R., and Rosenberg, L.L., 1997. Geologic map of the Monterey and Seaside 7.5-minute quadrangles, Monterey County, California: a digital database. U.S. Geological Survey Open-File Report 97-30, text 25 p., map scale 1:24,000.

Dibblee, T.W. Jr., 1999. Geologic map of the Monterey Peninsula and vicinity. Dibblee Geological Foundation, Santa Barbara, CA, Map no. 89-71, map scale 1:62,500.

Edwards, B.D., in press. Variations in sediment texture on the storm-dominated Monterey Bay National Marine Sanctuary continental shelf. Marine Geology.

Eittrheim, S.L., Anima, R.J., and Stevenson, A.J., in press. Seafloor geology of the Monterey Bay Continental Shelf. Marine Geology.

ESRI, 1998. ARC/INFO Version 7.2.1. Redlands, California, Environmental Systems Research Institute, Inc.

Galliher, E.W., 1932. Sediments of Monterey Bay, California. California Division of Mines, Report XXVIII of the State Mineralogist, v. 28, no. 1, p. 43-79.

McCulloch, D.S., Ulter, P.A., and Menck, J.S., 1985. Maps showing locations of selected pre-Quaternary rock samples from 34 degrees 30 minutes North latitude to 42 degrees North latitude, California continental margin. U.S. Geological Survey Miscellaneous Field Studies Map MF-1719, 38 p., 4 sheets, scale 1:250,000.

McCulloch, D.S., and Greene, H.G., 1989. Geologic map of the central California continental margin, in Greene, H.G., and Kennedy, M.F., editors, California Continental Margin Geologic Map Series, central California continental margin, map 5A (Geology). California Division of Mines and Geology, scale 1:250,000.

NOAA, 1998. NOS Hydrographic Survey Data, US Coastal Waters. Boulder, CO, World Data Center for Marine Geology & Geophysics, Data Announcement 98-MGG-03, CD-ROM Set, Version 4.0 (<http://www.ngs.noaa.gov/hydrography/hydro.html>).

Stakes, D.S., Righty, C.A., and Hancock, P.C., 1999. Igneous and sedimentary rocks from the Monterey Canyon, California and implications for regional tectonics. American Association of Petroleum Geologists Bulletin, v. 83, p. 68-76.

Wessel, P., and Smith, W.H.F., 1998. New, improved version of Generic Mapping Tools released: EOS Transactions of the American Geophysical Union, v. 79 (47), p. 579 (<http://www.soest.hawaii.edu/gmt/>).

SCALE 1:100,000
1 inch represents 1.58 miles

0 2 4 6 Kilometers
0 2 4 Miles

Bathymetric contour interval 10 m to 100 m depth, 500 m to maximum depth, supplementary contour 500 m

A Backscatter image of finely layered Monterey Formation (Tm). Bar = 100 m.

B Backscatter image of coarsely layered Santa Cruz Mudstone (Tsc). Bar = 100 m.

C Backscatter image of non-layered, mottled Purisima Formation (Tp). Bar = 100 m.

D Backscatter image of mud and fine sand (Qmud) showing uniform and low reflectivity adjacent to outcrop of Purisima Formation (Tp). Bar = 100 m.

E Shaded relief image of rough, knobby granitic (Kg) outcrops. Bar = 100 m.

F High backscatter (left) and shaded relief (right) images of coarse sand (Qsd) in rippled depressions within area of mud and fine sand (Qmud). Bar = 100 m.

37°0'N 36°45'N 36°30'N 36°15'N

122°15'W 122°0'W

SEAFLOOR ROCKS AND SEDIMENTS OF THE CONTINENTAL SHELF FROM MONTEREY BAY TO POINT SUR, CALIFORNIA

By
Stephen L. Eittrheim, Roberto J. Anima, Andrew J. Stevenson, and Florence L. Wong
2000



This map was prepared on an electronic plotter directly from digital files. Dimensions on the printed map may differ slightly from those on the original files. Therefore, scale and proportions may not be true in parts of the map.

For sale by U.S. Geological Survey, Map Distribution, Box 26888, Federal Center, Denver, CO 80225, 1-888-ASG-USGS.

Available on World Wide Web at <http://geoplatform.wr.usgs.gov/mf/mf2345/>

Any use of trade, firm or product names in this publication is for descriptive purposes only and does not imply endorsement by the U.S. Government.

Bathymetric data from National Oceanic and Atmospheric Administration (NOAA) / National Ocean Service (NOS) multibeam swath soundings for depths greater than 100 m and from the NOS Hydrographic Data Base (NOAA, 1998) for shallower depths were gridded at 2-second intervals with GMT's (Wessel and Smith, 1998) surface algorithm and smoothed with ArcInfo (ESRI, 1998) filter methods. Contour lines were generated from the resulting 50-m grid. The grid of bathymetric data was merged with USGS 30-m DEMs to calculate the shaded relief image, which has a 2X vertical exaggeration. UTM Zone 10, NAD83