

Prepared and published by the Defense Mapping Agency
Hydrographic/Topographic Center, Washington, D.C.

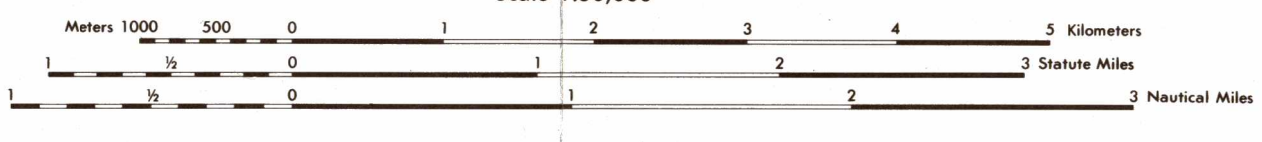
LEGEND

COMPILED IN 1983 FROM BEST AVAILABLE SOURCE
THE NUMBER IN PARENTHESES SHOWN BESIDE VILLAGE NAME INDICATES
THAT MORE THAN ONE VILLAGE IS SO NAMED WITHIN THE MAP SHEET AREA
A LANE IS CONSIDERED AS BEING A MINIMUM OF 2.4 METERS (8 FEET) IN WIDTH

ROADS	BOUNDARIES	Other Features
Dual Highway	International (with marker)	Spot elevation in meters
All weather, hard surface, 2 or more lanes wide	First-order administrative division	Highest on sheet
All weather, loose or light surface, 2 or more lanes wide	Built-up areas	Normal
All weather, hard surface, one lane wide	Area name	School, Destroyed building, Mine, quarry
Fair or dry weather, loose surface	Country, Cemetery with trees	Masonry dam, Earthen dam, Levee
Cart track, Trail	Horizontal control point	Wharf, Steep, E. topped
Tree lined road	Checked (with symbol)	Depth curves in meters
Route marker: International, National, Secondary	Unchecked (with symbol)	Pier, seawall
Road on levee	Checked (with symbol)	Unimproved stream
RAILROADS	Unchecked (with symbol)	Submerged reef, Sand
Normal gauge, 1 meter (3'3")	Checked (with symbol)	Reef, Swamp
Narrow gauge	Unchecked (with symbol)	Anchorages
Railroad tunnel	Checked (with symbol)	Foreshore flat
Power line: Single, Two or more	Unchecked (with symbol)	Well, Spring
Prominent wall, Fence	Checked (with symbol)	
Woodland, Orchard, plantation	Unchecked (with symbol)	
Nipa, Mangrove	Checked (with symbol)	
Rice, Scrub	Unchecked (with symbol)	

GLOSSARY

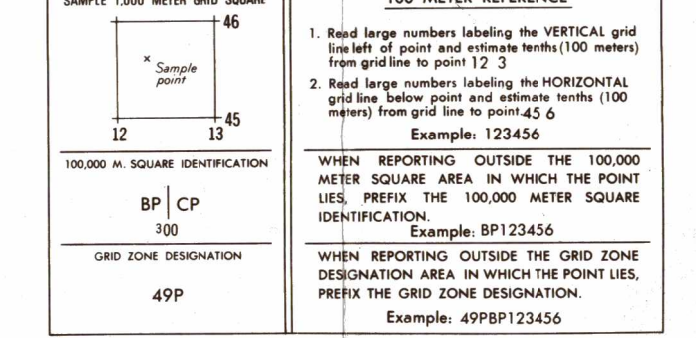
Bãi	beach, flood plain
Bàu, Ao	pond, lake
Bán Đảo	island
Côn	island
Hòn, Núi	mountain
Mũi	cape, point
Sân bay	airfield
Sông	stream
Suối	stream
Tỉnh	first-order administrative division



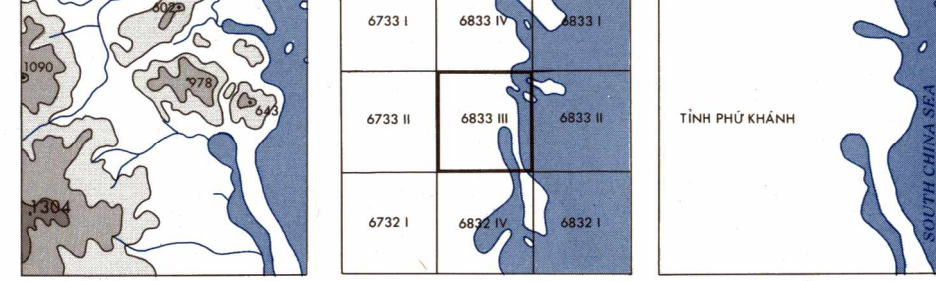
Scale 1:50,000
CONTOUR INTERVAL 20 METERS
SUPPLEMENTARY CONTOURS 10 METERS

SPHEROID: Everest
GRID: 1,000 METER UTM ZONE 49 (BLACK NUMBERED LINES)
PROJECTION: TRANSVERSE MERCATOR
VERTICAL DATUM: MEAN SEA LEVEL AT HA-TIEN
HORIZONTAL DATUM: INDIAN DATUM 1960
HYDROGRAPHIC DATUM: APPROXIMATE LEVEL OF LOWEST LOW WATER

Reprinted by MMA 11-89
USERS SHOULD REFER TO CORRECTIONS, ADDITIONS, AND COMMENTS TO THE NIMA CUSTOMER HELP DESK: 1-800-456-0888; COMMERCIAL: 301-950-5022; 128 450-5022; OR WRITE TO DIRECTOR, NATIONAL IMAGERY AND MAPPING AGENCY, ATTN: CDD, MAIL STOP P-37, 4400 SANGAMORE ROAD, BETHESDA, MD 20815-5003.



ELEVATION GUIDE **ADJOINING SHEETS** **BOUNDARIES**



THIS MAP IS RED-LIGHT READABLE

NSN 764301402338 ED. NO. 003
NIMA REF. NO. L701468333