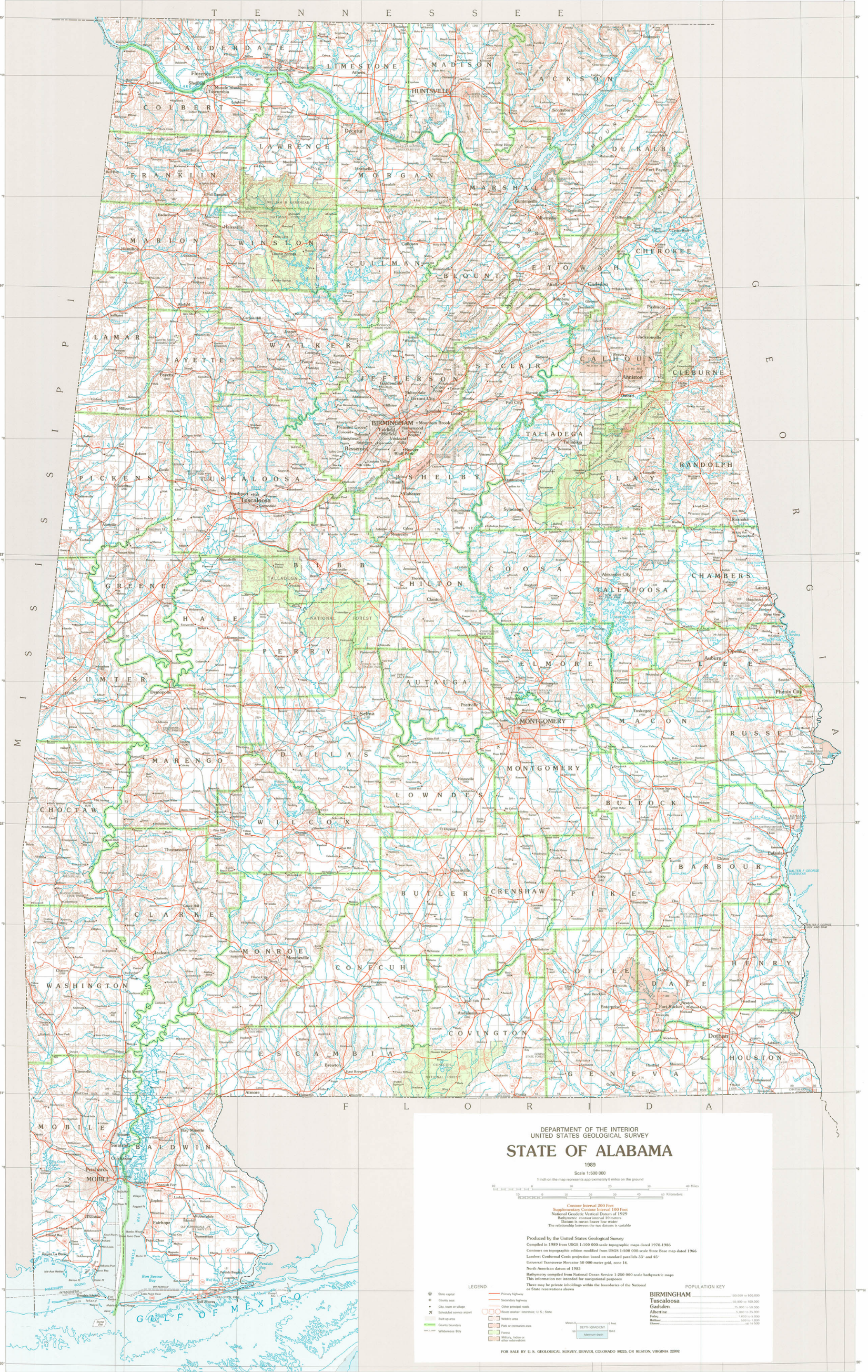


T E N N E S S E E



# STATE OF ALABAMA

1983

Scale 1:500 000

1 inch on the map represents approximately 8 miles on the ground



Contour Interval 200 Feet  
Supplementary Contour Interval 100 Feet  
National Geodetic Vertical Datum of 1929  
Barometric contour interval 10 meters  
Datum is mean lower low water  
The relationship between the two datums is variable

Produced by the United States Geological Survey  
Compiled in 1989 from USGS 1:100 000-scale topographic maps dated 1978-1986  
Contours on topographic edition modified from USGS 1:500 000-scale State Blue map dated 1966  
Lambert Conformal Conic projection based on standard parallels 33° and 45°  
Universal Transverse Mercator 50 000-meter grid, zone 16  
North American datum of 1983  
Bathymetry compiled from National Ocean Service 1:250 000 scale bathymetric maps  
This information not intended for navigational purposes  
There may be private landholdings within the boundaries of the National or State reservations shown.

### LEGEND

- State capital
- County seat
- City, town or village
- Scheduled service airport
- County boundary
- Wilderness boundary
- Primary Highway
- Secondary highway
- Other principal roads
- Interstate: U.S. State
- Waste area
- Park or recreation area
- Forest
- Military, Indian or other reservation

### POPULATION KEY

- BIRMINGHAM
- Tuscaloosa
- Gadsden
- Albertville
- Fairhope
- Prichard
- Enterprise

FOR SALE BY U.S. GEOLOGICAL SURVEY, DENVER, COLORADO 80225, OR RESTON, VIRGINIA 22092