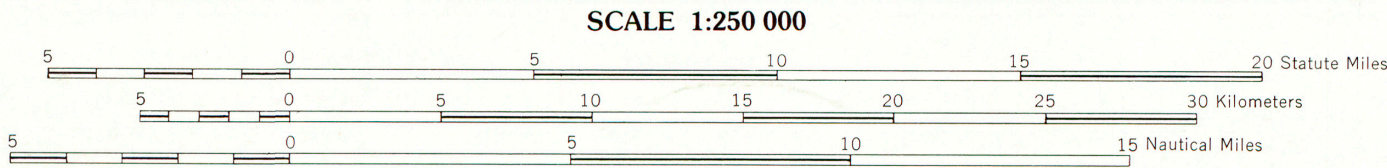


Produced by the United States Geological Survey
Imagery recorded with Multispectral Scanner (MSS) on Landsat-2
Mosaic controlled to identified mapped features
The root-mean-square error in position of well-defined features is estimated to be less than 80 meters
Projection and 10,000-meter grid: Universal Transverse Mercator, zone 7
100,000-foot grid ticks based on Alaska coordinate system, zone 2
1927 North American Datum
To place on the North American Datum 1983
move the projection lines 15 meters north and 103 meters east



Information on indexing, cost and availability of Landsat data may be obtained from
U.S. Geological Survey, EROS Data Center, Customer Services, Sioux Falls, South Dakota 57198

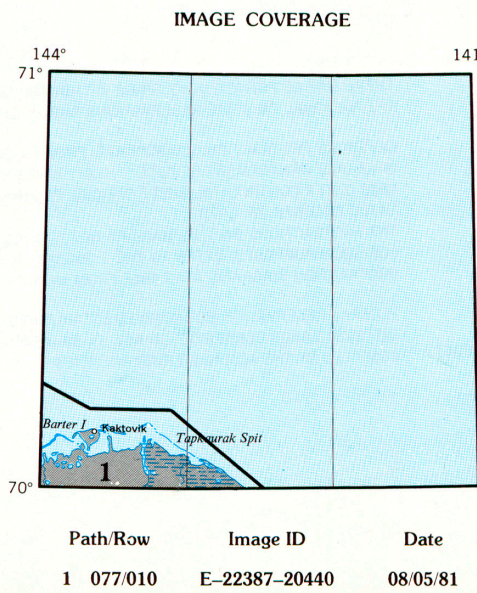
To compare with map on reverse, cut along the 142°30' meridian

MSS wave bands used:
#4 (1)* 0.5-0.6 µm, green, printed in yellow
#5 (2)* 0.6-0.7 µm, red, printed in magenta
#7 (4)* 0.8-1.1 µm, near infrared, printed in cyan
*MSS bands 4, 5, 6, and 7 were redesignated 1, 2, 3 and 4 respectively for Landsats 4 and 5

WAVE BANDS AND COLORS

Color generally relates to typical features as follows:
Black Deep clear water
Blue to dark blue Shallow or turbid water, braided stream beds, deltas, bare rock, and sparsely vegetated areas
Gray-green Herbaceous vegetation
Light reddish brown Dwarf shrub
White, bluish-white Ice

FOR SALE BY U. S. GEOLOGICAL SURVEY
FAIRBANKS, ALASKA 99701, DENVER, COLORADO 80225, OR RESTON, VIRGINIA 22092



BARTER ISLAND, ALASKA
70141-A1-SI-250
1981

