

SERIES 1501 AIR SHEET NE 48-2 EDITION 2

LEGEND - LEGENDE

POPULATED PLACES - LIEUX HABITES

VIENTIANE
DIEN BIEN PHU
LOUANGPHRABANG

1st importance 1^{re} importance
2nd importance 2^e importance
3rd importance 3^e importance
4th importance 4^e importance
5th importance 5^e importance
6th importance 6^e importance

ROADS - ROUTES

All weather, hard surface
A surface durcie, par toute saison
Two or more lanes
Deux voies ou plus
One lane
Une voie
Fair or dry weather, loose surface
Usable par temps sec, surface meuble
Cart track
Chemin d'exploitation
Trail (footpath)

BOUNDARIES - LIMITES

International d'Etat
Primary administrative Subdivision de 1^{er} ordre
Church School Eglise; Ecole
Temple Pagoda Temple; Pagode
Spot elevation: normal, critical
Point coté: normal, critique
Swamp or marsh Riziére
Maraix ou marécage
Bois-broussailles

TERRAIN ELEVATIONS - ALTITUDES DU TERRAIN

HIGHEST KNOWN elevation is **8894** feet at 19°12'N 104°11'E
Cote maxima du terrain est **8894** pieds à 19°12'N 104°11'E
± following elevation value indicates accuracy is not within 145 feet
± suivat une valeur d'altitude indique une précision inférieure ou 30 pieds

AERODROMES (Military or Civil)
AERODROMES (Militaire ou Civil)

Field limits with runway pattern
Limites de champ d'aviation, avec réseau des pistes
EDNA - Name Designation
50 - Length of longest runway to nearest hundred of feet
Longueur de la plus longue piste arrondie à la plus proche centaine de pieds
1 - Soft or unpaved surface
Surface meuble ou non aménagée
725 - Elevation Cote

Field limits, with runway pattern unknown
Limites de champ avec réseau des pistes inconnus
Field limits unknown with runway pattern
Limites de champ inconnus, avec réseau des piste
Field limits and runway pattern
Limites de champ et réseau des pistes inconnus

SEAPLANE BASE BASE D'HYDRONAVES
SEAPLANE EMERGENCY HYDRATION (SECOURS)

HELIPORT HELIPORT

RADIO FACILITIES

RADIO RANGE LF/MF
MULTIPLE RADIO FACILITIES

MAGNETIC VARIATION

Isogonic line
Ligne de variation magnétique
7° E

VISUAL AIDS AND OBSTRUCTIONS
AIDES ET OBSTACLES VISUELS

Obstruction Obstacle
1108 - Elevation of obstruction top, above sea level
Cote du sommet de l'obstacle au-dessus du niveau de la mer
129 - Elevation of obstruction top, above ground level
Hauteur du sommet de l'obstacle au-dessus du niveau du sol
Group obstruction Groupe d'obstacles
Radio facility obstruction Obstacle d'installations radio

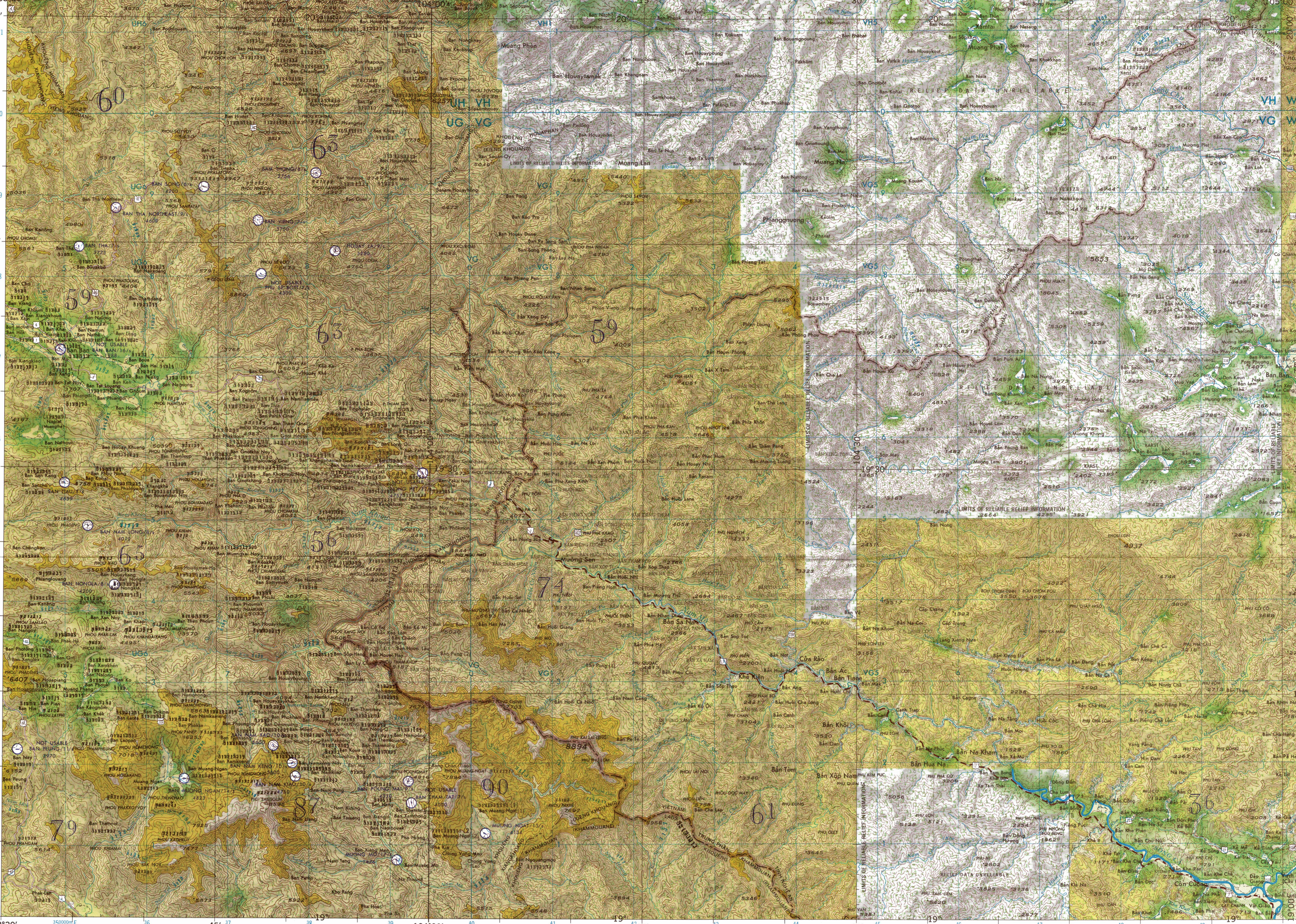
Power transmission line
Ligne de haute tension
Ocean station vessel (Normal position)

Visual ground sign
Aero Light, Marine Light

CAUTION
AIR INFORMATION CURRENT THROUGH
22 JUNE 1967
Consult Notices to Airmen (NOTAMS) and Flight Information Publications (FIPs) for the latest air information; the Chart Updating Manual (CHUM) for other chart revision information.

HIGHEST TERRAIN elevations for each 15 MINUTE QUADRANGLE are represented in THOUSANDS and HUNDREDS of feet. They are omitted where relief information is inadequate. A minus sign (-) following the figure indicates that the figure is based on an estimated elevation.

EXAMPLES: 51 81-



Prepared under the direction of the Defense Intelligence Agency and published by Army Map Service, Corps of Engineers, U. S. Army, Washington, D. C. Compiled in 1966 from best available source materials.

ELEVATIONS IN FEET
COTES EXPRIMEES EN PIEDS

JOINT OPERATIONS GRAPHIC (AIR)

ELEVATIONS IN FEET
COTES EXPRIMEES EN PIEDS

Scale 1:250,000

5 0 5 10 15 20 25 30 Statute Miles
5 0 5 10 15 20 25 30 Kilometers
10 Nautical Miles

GEOREF BASIC 15° QUADRANGLE UH

LOCATION DIAGRAM FOR NE 48-2 (WAC INDEX SHOWN IN BLUE)

CHINA
BURMA
THAILAND
VIETNAM
LAOS
CAMBODIA
INDONESIA

20° 19° 18°
104° 103° 102°

22°
21°
20°
19°
18°
17°

104-11
104-12
104-13
104-14
104-15
104-16
104-17
104-18
104-19
104-20
104-21
104-22

103-30
103-31
103-32
103-33
103-34
103-35
103-36
103-37
103-38
103-39
103-40
103-41
103-42

105° 104° 103° 102° 101° 100°

19° 18° 17°

RELIABILITY OF THIS MAP
Compiled from best available source materials 1966.
Horizontal Datum: Indian 1960
Vertical Datum: Approximate Sea Level

NSN 7641014100976
NIMA REF. NO. 1501ANE4802

Prepared under the direction of the Defense Intelligence Agency and published by Army Map Service, Corps of Engineers, U. S. Army, Washington, D. C. Compiled in 1966 from best available source materials.

ELEVATIONS IN FEET
COTES EXPRIMEES EN PIEDS

JOINT OPERATIONS GRAPHIC (AIR)

ELEVATIONS IN FEET
COTES EXPRIMEES EN PIEDS

Scale 1:250,000

5 0 5 10 15 20 25 30 Statute Miles
5 0 5 10 15 20 25 30 Kilometers
10 Nautical Miles

GEOREF BASIC 15° QUADRANGLE UH

LOCATION DIAGRAM FOR NE 48-2 (WAC INDEX SHOWN IN BLUE)

CHINA
BURMA
THAILAND
VIETNAM
LAOS
CAMBODIA
INDONESIA

20° 19° 18°
104° 103° 102°

22°
21°
20°
19°
18°
17°

104-11
104-12
104-13
104-14
104-15
104-16
104-17
104-18
104-19
104-20
104-21
104-22

103-30
103-31
103-32
103-33
103-34
103-35
103-36
103-37
103-38
103-39
103-40
103-41
103-42

105° 104° 103° 102° 101° 100°

19° 18° 17°

RELIABILITY OF THIS MAP
Compiled from best available source materials 1966.
Horizontal Datum: Indian 1960
Vertical Datum: Approximate Sea Level

NSN 7641014100976
NIMA REF. NO. 1501ANE4802

Contours approximately 330 feet (100 meters) with supplementary contours at approximately 165 feet (50 meters) relief partially shown by form lines.

EQUIDISTANCE APPROXIMATIVE DES COURBES NORMALES: 330 PIEDS (100 MÈTRES); COURBES INTERCALAIRES À 165 PIEDS (50 MÈTRES)
RELIEF REPRÉSENTÉ PARTIELLEMENT PAR DES COURBES FIGURATIVES

CAUTION: Contour values are approximate conversion of meters to feet and may be up to 50 feet higher than true value.

AVIS: Les valeurs des courbes de niveau sont des valeurs approchées de conversion de mètres en pieds et peuvent être jusqu'à 50 pieds plus élevées que les valeurs réelles.

TRANSVERSE MERCATOR PROJECTION

BLUE NUMBERED LINES INDICATE THE 10,000 METER UNIVERSAL TRANSVERSE MERCATOR GRID, ZONE 48, EVEREST SPHEROID.
LES LIGNES CHIFFRÉES EN BLEU CORRESPONDENT AU 10,000 MÈTRES DE QUADRILLAGE DE UTM DU FUSEAU 48, SPHEROÏDE DE EVEREST

Scale 1:250,000

5 0 5 10 15 20 25 30 Statute Miles
5 0 5 10 15 20 25 30 Kilometers
10 Nautical Miles

GEOREF BASIC 15° QUADRANGLE UH

LOCATION DIAGRAM FOR NE 48-2 (WAC INDEX SHOWN IN BLUE)

CHINA
BURMA
THAILAND
VIETNAM
LAOS
CAMBODIA
INDONESIA

20° 19° 18°
104° 103° 102°

22°
21°
20°
19°
18°
17°

104-11
104-12
104-13
104-14
104-15
104-16
104-17
104-18
104-19
104-20
104-21
104-22

103-30
103-31
103-32
103-33
103-34
103-35
103-36
103-37
103-38
103-39
103-40
103-41
103-42

105° 104° 103° 102° 101° 100°

19° 18° 17°

RELIABILITY OF THIS MAP
Compiled from best available source materials 1966.
Horizontal Datum: Indian 1960
Vertical Datum: Approximate Sea Level

NSN 7641014100976
NIMA REF. NO. 1501ANE4802

Contours approximately 330 feet (100 meters) with supplementary contours at approximately 165 feet (50 meters) relief partially shown by form lines.

EQUIDISTANCE APPROXIMATIVE DES COURBES NORMALES: 330 PIEDS (100 MÈTRES); COURBES INTERCALAIRES À 165 PIEDS (50 MÈTRES)
RELIEF REPRÉSENTÉ PARTIELLEMENT PAR DES COURBES FIGURATIVES

CAUTION: Contour values are approximate conversion of meters to feet and may be up to 50 feet higher than true value.

AVIS: Les valeurs des courbes de niveau sont des valeurs approchées de conversion de mètres en pieds et peuvent être jusqu'à 50 pieds plus élevées que les valeurs réelles.

TRANSVERSE MERCATOR PROJECTION

BLUE NUMBERED LINES INDICATE THE 10,000 METER UNIVERSAL TRANSVERSE MERCATOR GRID, ZONE 48, EVEREST SPHEROID.
LES LIGNES CHIFFRÉES EN BLEU CORRESPONDENT AU 10,000 MÈTRES DE QUADRILLAGE DE UTM DU FUSEAU 48, SPHEROÏDE DE EVEREST

Scale 1:250,000

5 0 5 10 15 20 25 30 Statute Miles
5 0 5 10 15 20 25 30 Kilometers
10 Nautical Miles

GEOREF BASIC 15° QUADRANGLE UH

LOCATION DIAGRAM FOR NE 48-2 (WAC INDEX SHOWN IN BLUE)

CHINA
BURMA
THAILAND
VIETNAM
LAOS
CAMBODIA
INDONESIA

20° 19° 18°
104° 103° 102°

22°
21°
20°
19°
18°
17°

104-11
104-12
104-13
104-14
104-15
104-16
104-17
104-18
104-19
104-20
104-21
104-22

103-30
103-31
103-32
103-33
103-34
103-35
103-36
103-37
103-38
103-39
103-40
103-41
103-42

105° 104° 103° 102° 101° 100°

19° 18° 17°

RELIABILITY OF THIS MAP
Compiled from best available source materials 1966.
Horizontal Datum: Indian 1960
Vertical Datum: Approximate Sea Level

NSN 7641014100976
NIMA REF. NO. 1501ANE4802