

DEPARTMENT OF THE INTERIOR
UNITED STATES GEOLOGICAL SURVEY
W. E. WRATHER, DIRECTOR

The "Geologic Quadrangle Maps of the United States" replaces the earlier series of "Folios of the Geologic Atlas of the United States" that was published by the Geological Survey from 1894 to 1945. The new series consists of geologic maps, supplemented where possible by structure sections, columnar sections, and other graphic means of presenting geologic data and accompanied by the minimum of explanatory text required to make the maps useful for general scientific and economic purposes. Full description of the areas shown on these maps and interpretation of the geologic history are reserved for publication in other channels, such as the bulletins and professional papers of the Geological Survey.

Where additional types of geologic maps are required, separate maps of the same areas, entitled "Economic Geology," "Surficial Geology," "Engineering Geology," etc., are published in the geologic quadrangle map series. Each edition is issued in two forms—flat for filing in large map cases and folded for convenience in filing and for use in the field.

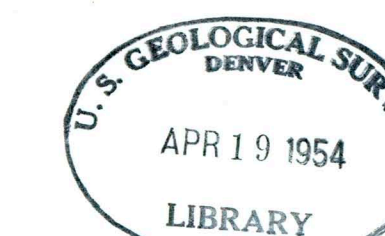
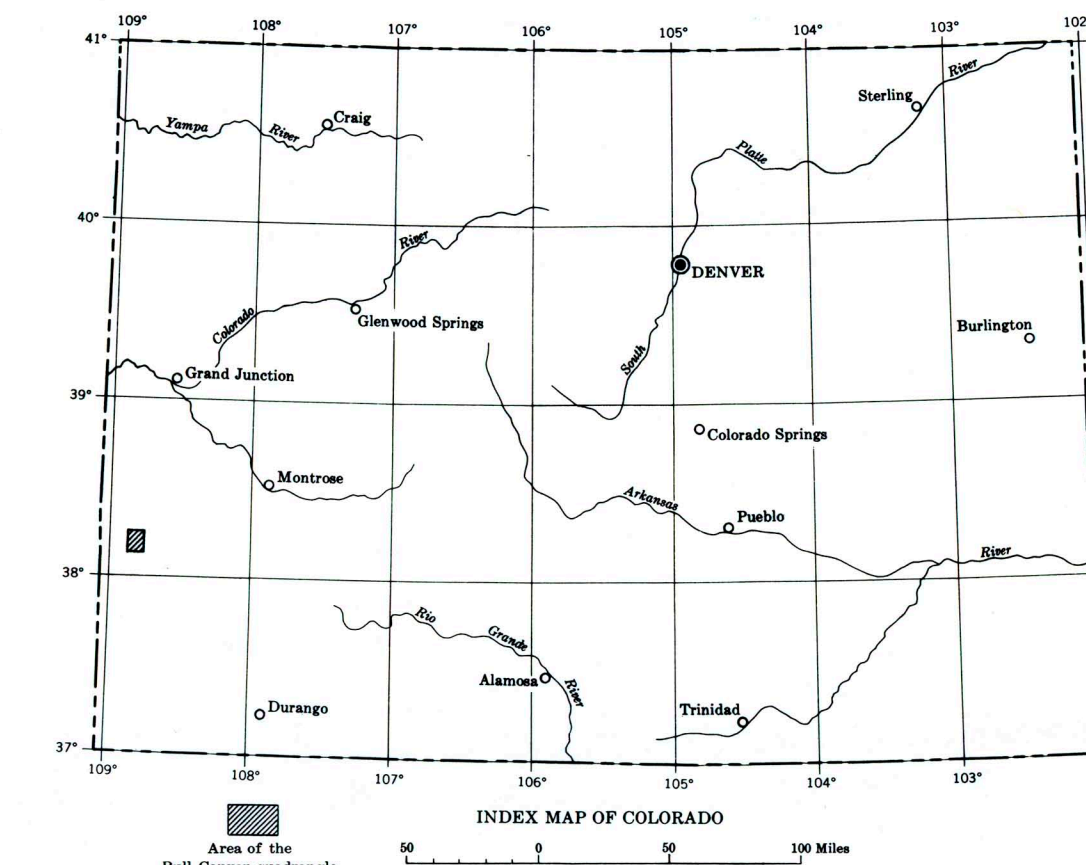
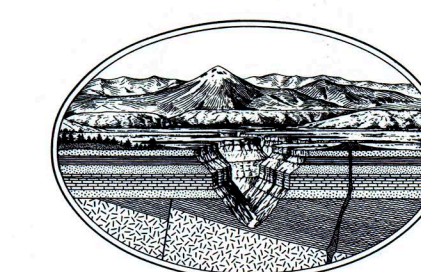
These maps may be obtained, flat or folded, from the U. S. Geological Survey, Washington 25, D. C., at the prices listed below. Prepayment is required and may be made by postal or express money order payable to the U. S. Geological Survey, or in cash—the exact amount—at sender's risk. Postage stamps are not accepted in payment for publications.

PUBLISHED MAPS IN THE
GEOLOGIC QUADRANGLE MAP SERIES

Bedrock geology of the Pawtucket quadrangle, Rhode Island—Massachusetts, by Alonso W. Quinn, R. G. Ray, and W. S. Seymour, 1949	50.00
Surficial geology of the Pawtucket quadrangle, Rhode Island—Massachusetts, by Newton E. Chute, 1949	50
Bedrock geology of the Mount Grace quadrangle, Massachusetts, by Jarvis R. Hadley, 1949	50
Surficial geology of the Mount Grace quadrangle, Massachusetts, by Jarvis R. Hadley, 1949	50
Bedrock geology of the Brockton quadrangle, Massachusetts, by Newton E. Chute, 1950	50
Surficial geology of the Brockton quadrangle, Massachusetts, by Newton E. Chute, 1950	50
Geology of the Mount Tobin quadrangle, Nevada, by S. W. Miller, H. G. Ferguson, and Ralph J. Roberts, 1951	50
Bedrock geology of the Mount Tobin quadrangle, Massachusetts, by Max E. Willard, 1951	50
Surficial geology of the Mount Tobin quadrangle, Massachusetts, by Richard H. Johns, 1951	50
Geology of the Antler Peak quadrangle, Nevada, by Ralph J. Roberts, 1951	50
Geology of the Winnemucca quadrangle, Nevada, by H. G. Ferguson, S. W. Miller, and Ralph J. Roberts, 1951	50
Geology of the Mount Moses quadrangle, Nevada, by H. G. Ferguson, S. W. Miller, and Ralph J. Roberts, 1951	50
Bedrock geology of the North Sittouat quadrangle, Rhode Island, by Alonso W. Quinn, 1951	50
Geology of the Danvers quadrangle, New York, by A. Williams Postal, 1951	50
Geology of the Goconda quadrangle, Nevada, by H. G. Ferguson, Ralph J. Roberts, and S. W. Miller, 1952	1.00
Bedrock geology of the Goconda quadrangle, Nevada, by H. G. Ferguson, Ralph J. Roberts, and S. W. Miller, 1952	1.00
Bedrock geology of the East Greenwich quadrangle, Rhode Island, by Alonso W. Quinn, 1952	1.00
Geology of the Nixa quadrangle, Tennessee, by John Rodgers, 1952	1.00
Geology of the Adams quadrangle, Tennessee, by John Rodgers, 1952	1.00
Bedrock geology of the Greenfield quadrangle, Massachusetts, by Max E. Willard, 1952	1.00
Surficial geology of the Ayer quadrangle, Massachusetts, by Richard H. Johns, 1952	1.00
Surficial geology of the Georgetown quadrangle, Rhode Island, by Gerald M. Richmond, 1952	1.00
Geology of the Coaldale quadrangle, Nevada, by H. G. Ferguson, S. W. Miller, and S. H. Cathcart, 1953	1.00
Geology of the Pearland quadrangle, California, by Levi P. Noble, 1953	1.00
Geology of the Galice quadrangle, Oregon, by F. G. Wells and G. W. Walker, 1953	1.00
Geology of the Bowbells quadrangle, North Dakota, by Richard W. Lemke and Clifford A. Kaye, 1953	1.00
Bedrock geology of the Ahmeek quadrangle, Michigan, by Walter S. White, Henry R. Cornwall, and Roger W. Swanson, 1953	1.00
Geology of the Cuddeback quadrangle, Pennsylvania, by G. W. Stone, 1953	1.00
Geology of the Bagleton quadrangle, Montana, by Robert M. Lindvall, 1953	1.00
Bedrock geology of the Silver Creek quadrangle, New York, by Wallace de Witt, Jr., and George W. Colton, 1953	1.00
Geology of the Velsa quadrangle, North Dakota, by Richard W. Lemke, 1954	1.00
Geology of the Pierre quadrangle, South Dakota, by Dwight R. Crandall, 1954	1.00
Geology of the Bull Canyon quadrangle, Colorado, by Fred W. Cater, Jr., 1954	1.00

GEOLOGIC
QUADRANGLE MAPS
OF THE
UNITED STATES

GEOLOGY
OF THE
BULL CANYON QUADRANGLE
COLORADO
By
Fred W. Cater, Jr.



24260

WASHINGTON, D. C.
PUBLISHED BY THE U. S. GEOLOGICAL SURVEY
A. WILLIAMS POSTEL, GEOLOGIC MAP EDITOR LEWIS R. FURRY, CHIEF, SECTION OF GEOLOGIC CARTOGRAPHY
CHARLES W. BENNETT, CHIEF, BRANCH OF MAP REPRODUCTION
1954