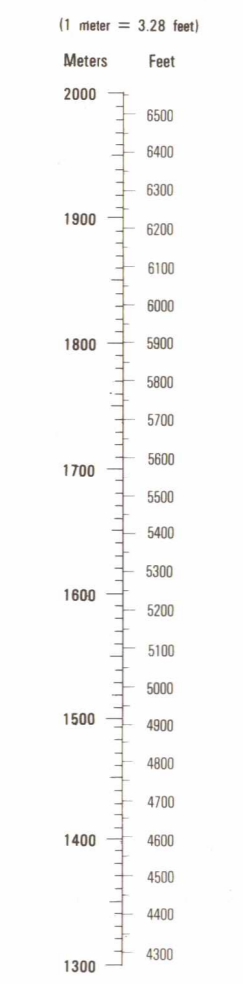


CONVERSION GRAPH
ÉCHELLE DE CONVERSION



Cartesian photogrammetric adjustment: 1973
Control points: 15, 1973, S.T.N. 1976
Datum: African continent
Projection: UTM
Scale: 1:50,000
Vertical aerial photo coverage: 1973
Photometric field control: Interpolation
Datum: African continent
Projection: UTM
Scale: 1:50,000
Vertical contour interval: 20 meters

Établi par:
L'INSTITUT GÉOGRAPHIQUE NATIONAL
136 bis, rue de Grenelle 75700 Paris



En collaboration avec:
L'INSTITUT GÉOGRAPHIQUE DU BURUNDI
(B.P. 331 Bujumbura)

Fournisseur de:
FONDS D'AIDE ET DE COOPÉRATION DE LA RÉPUBLIQUE FRANÇAISE

Titre Edition: 1983

BUJUMBURA

GITEGA

MAKAMBA

KABEZI

MBARE

Murora Girara Rusaka

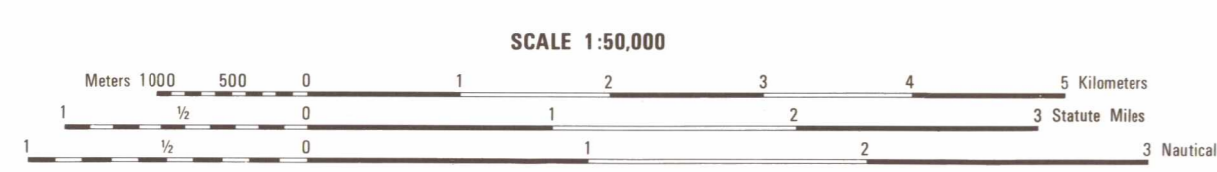
REPUBLIC OF BURUNDI

Province of Rutana

Arrondissement de Cankuzo

Communes de Cankuzo

Communes de Gisagara



CAUTION
THIS PRODUCT MAY NOT CONFORM TO THE HORIZONTAL ACCURACY REQUIREMENTS FOR 1:50,000 TOPOGRAPHIC LINE MAPS. EXTREME CAUTION SHOULD BE USED WHEN MAKING MEASUREMENTS.

FOR MILITARY AND HUMANITARIAN PURPOSES

ATTENTION
SI CE PRODUIT N'EST PAS CONFORME AUX EXIGENCES DE PRÉCISION HORIZONTALE POUR LES CARTES TOPOGRAPHIQUES D'ÉCHELLE 1:50 000, UNE EXTREME PRÉCAUTION DOIT ÊTRE UTILISÉE EN PRENANT LES MESURES.

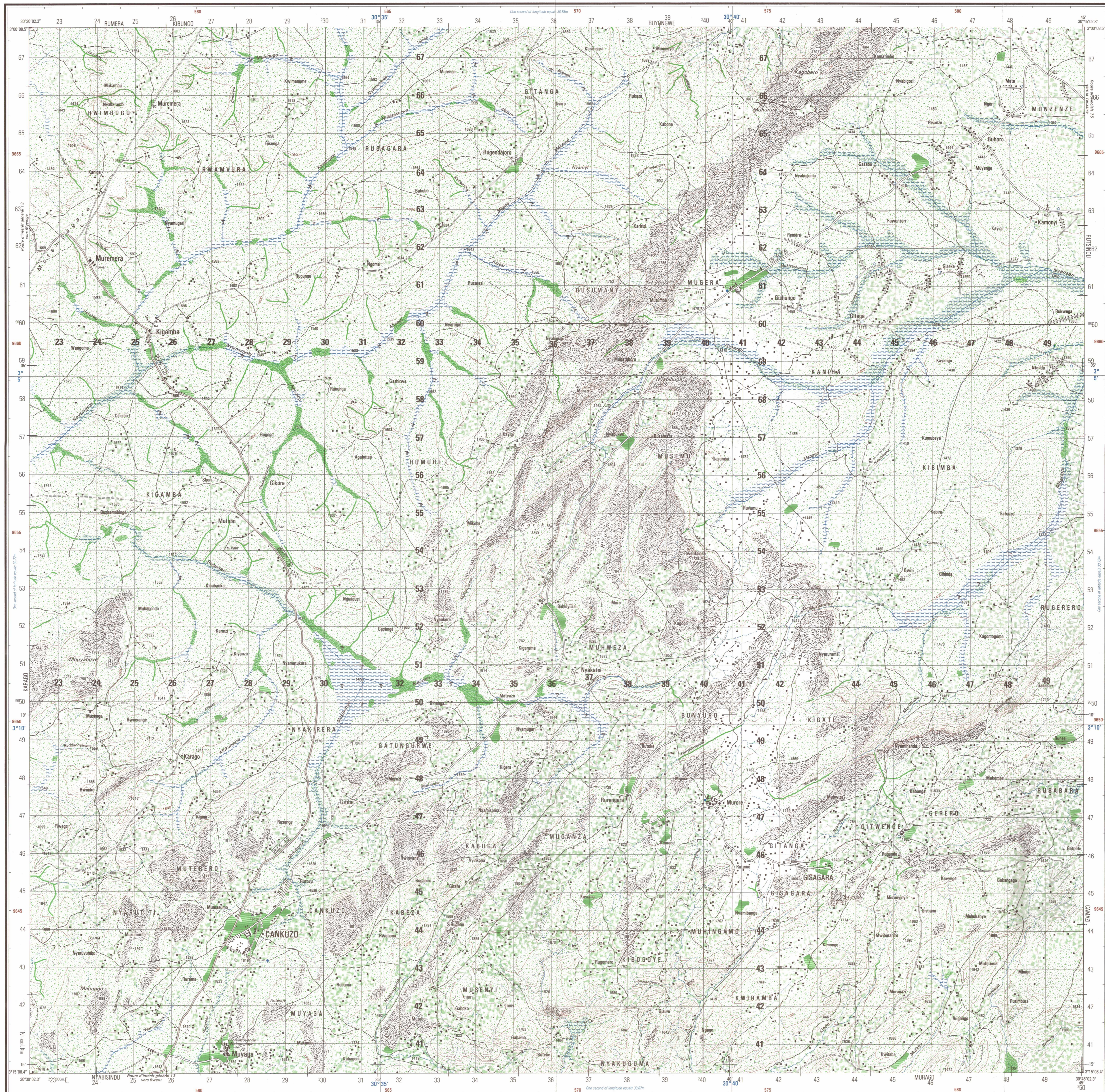
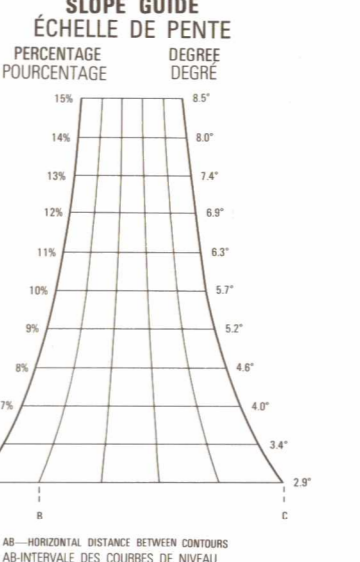


Table of conventional symbols for various features like roads, rivers, and buildings.

UNITED STATES GOVERNMENT
DISTRIBUTION STATEMENTS
This publication is in the public domain in the United States of America.

COORDINATE CONVERSION
1:50,000 METERS UTM ZONE 18N
1:50,000 METERS UTM ZONE 18N
1:50,000 METERS UTM ZONE 18N



ADDING SHEETS
TABLEAU SYNOPTIQUE DES FEUILLES
NOTE: There are two series overlapping in this area. Each is superimposed onto the assigned area of the sheet.