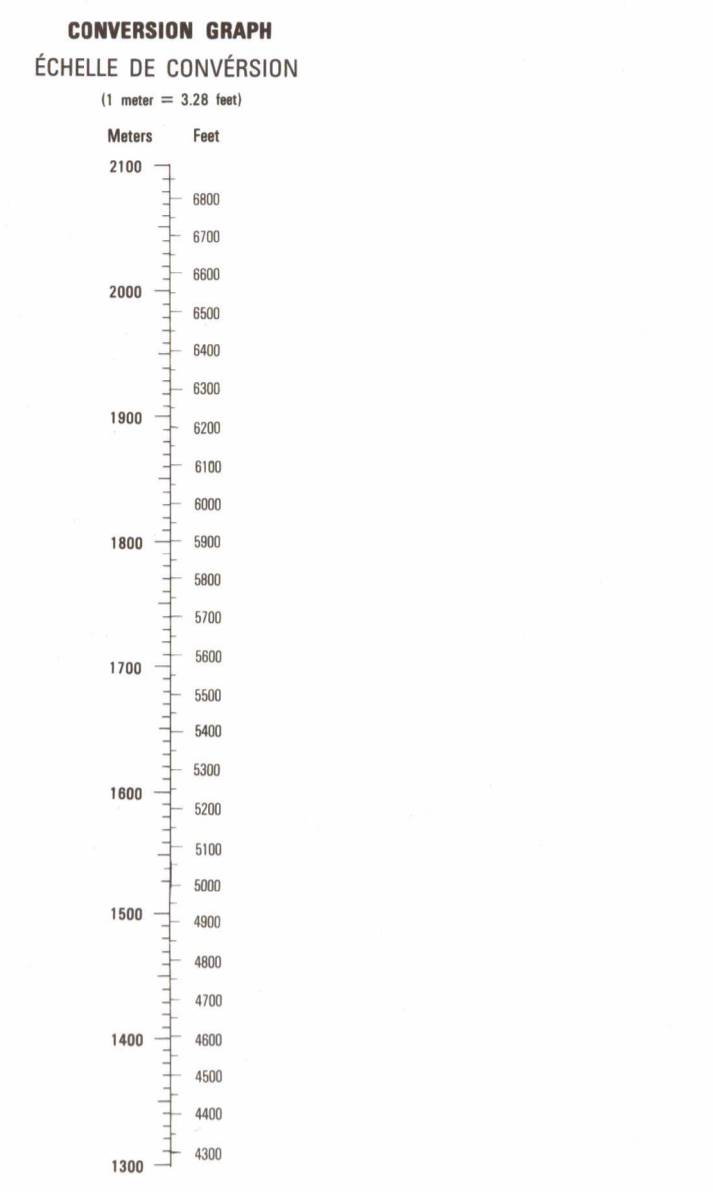
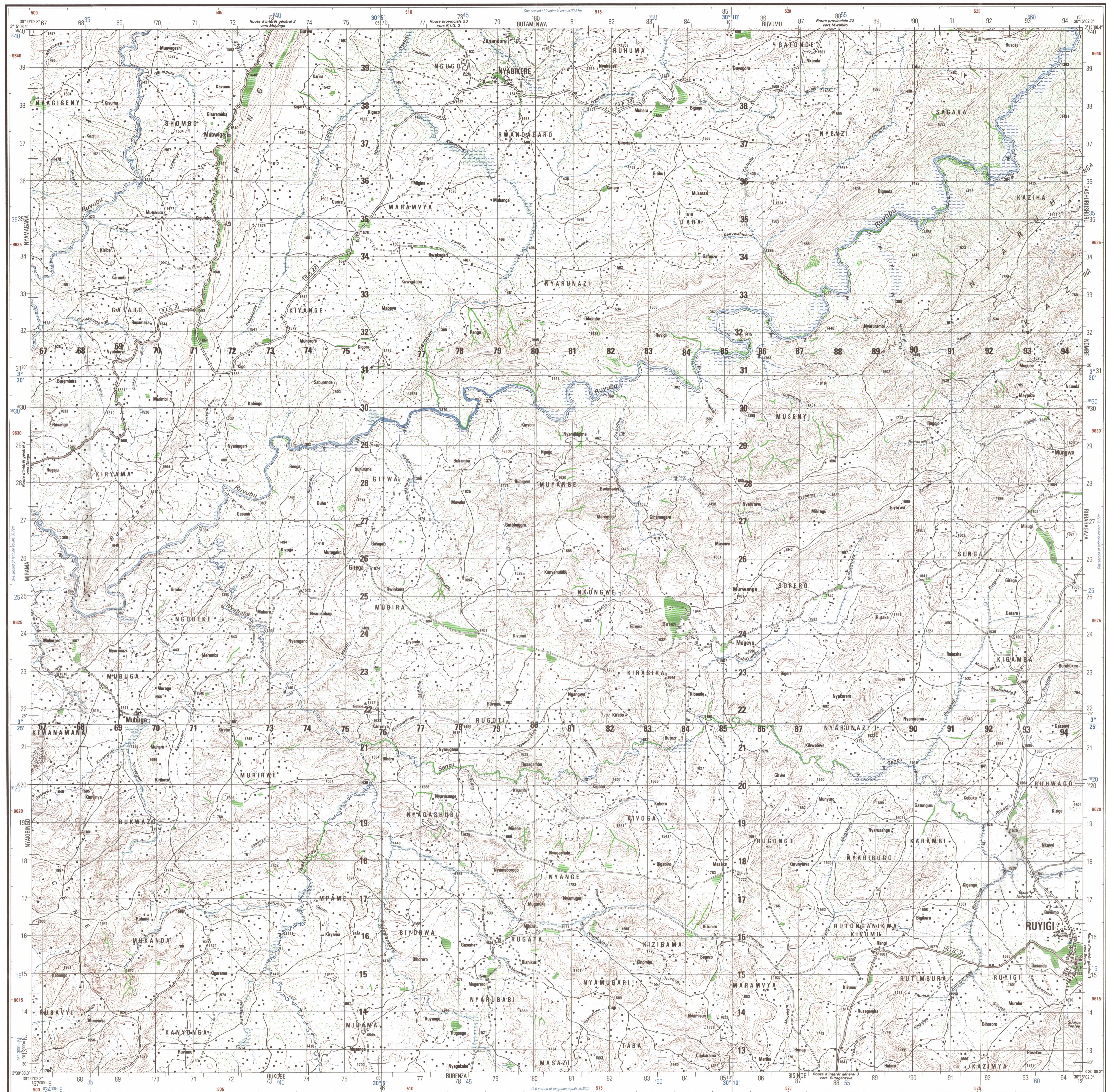
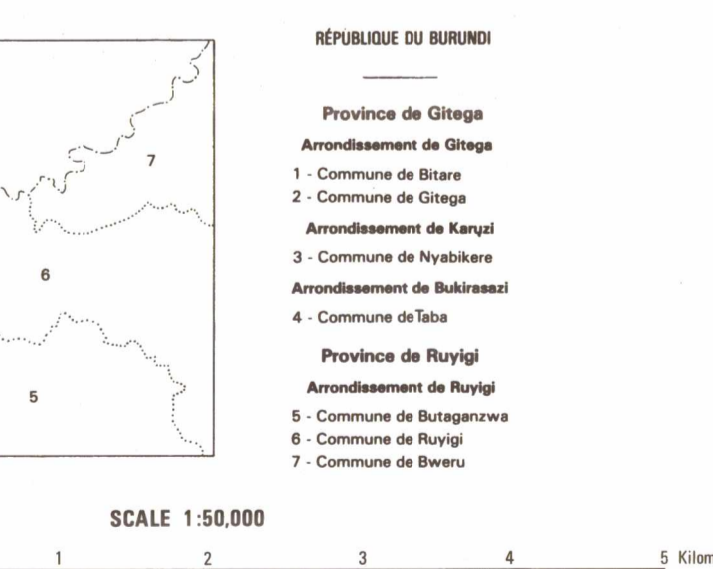


Table of conventional symbols for the map, listing symbols for roads, railways, water features, and other geographical elements in both French and Kinyarwanda.



Vertical aerial photo coverage: 1973
Passive field control: 1973
Data source: 1980
Aerial photo coverage: 1980
Data source: 1981
Photoreproduction: 1981

- BUJUMBURA: Capitale, frontière
GITEGA: Province, chef lieu, frontière
MAKAMBA: District, chef lieu, frontière
KABEZI: Commune, chef lieu, frontière
MBARE: Commune, chef lieu, frontière

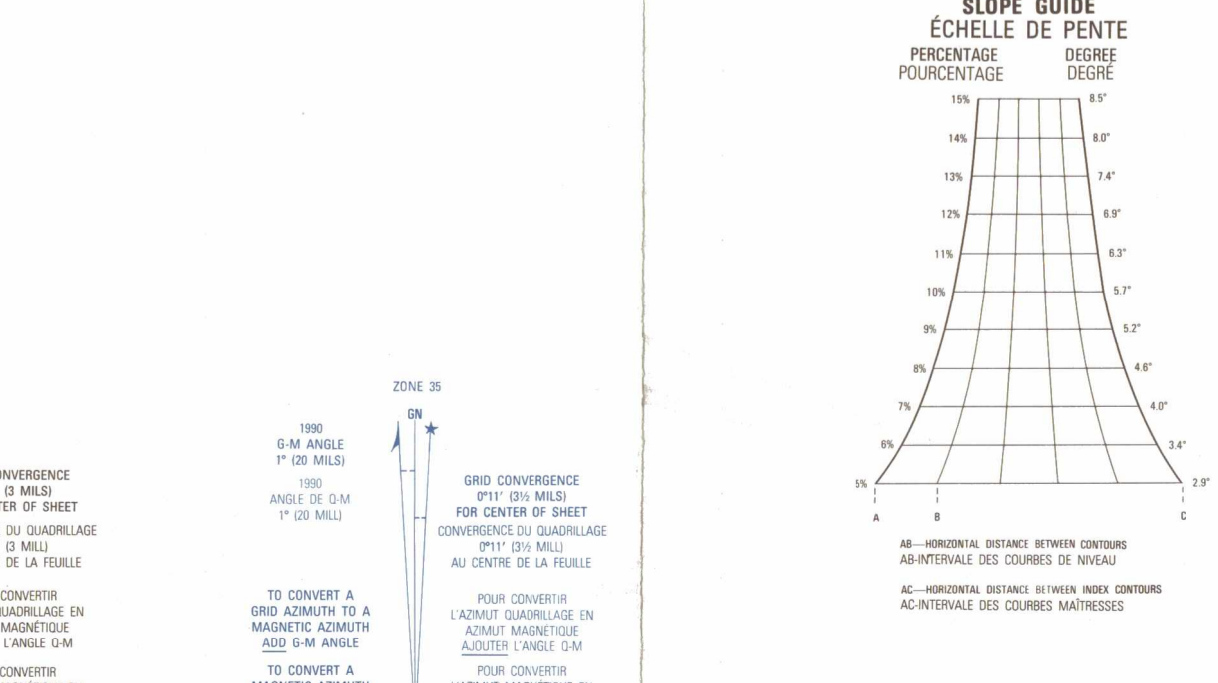


CAUTION
THIS PRODUCT MAY NOT CONFORM TO THE HORIZONTAL ACCURACY REQUIREMENTS FOR 1:50,000 TOPOGRAPHIC LINE MAPS. EXTREME CAUTION SHOULD BE USED WHEN MAKING MEASUREMENTS.

FOR MILITARY AND HUMANITARIAN PURPOSES

ATTENTION
SI CE PRODUIT N'EST PAS CONFORME AUX DEMANDES DE PRÉCISION HORIZONTALES POUR LES CARTES TOPOGRAPHIQUES D'ÉCHELLE 1:50,000, UN EXTRÊME PRÉCAUTION DOIT ÊTRE UTILISÉE EN PRENANT LES MESURES.

COORDINATE CONVERSION TABLES for UTM and MGRS systems, including instructions for use and conversion formulas.



ADJOINING SHEETS (Tableau synoptique des feuilles) listing adjacent map sheets and their coordinates.