

Couverture photographique aérienne verticale: 1973  
Stereopaire en 1983  
Cadrans altimétriques: triangulation, nivellement de précision, nivellement barométrique  
Aérotelegraphie analytique: 1980  
Révision photogramétrique: 1981  
Précision sur le terrain: 1981

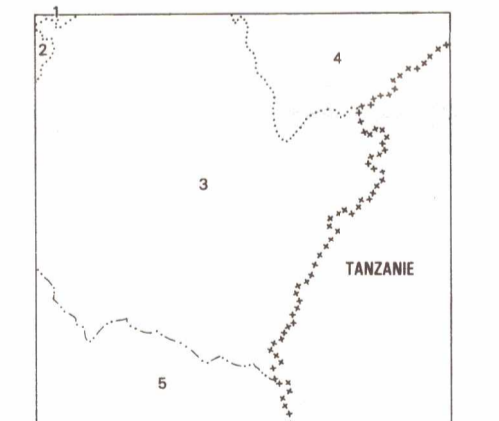
Établi par:  
l'INSTITUT GÉOGRAPHIQUE NATIONAL - FRANCE  
136 bis, rue de Grenelle 75700 Paris



Nation state: capital, boundary  
Etat: capitale, frontière  
Province: chef-lieu, limite  
Arrondissement: chef-lieu, limite

**BUJUMBURA**  
**GITEGA**  
**MAKAMBA**  
**KABEZI**  
**MBARE**

Muror Gitega, Ruska



Province de Rutigi  
Arrondissement de Rutigi  
Commune de Rutigi  
Commune de Bujumbura  
Commune de Kinyinya  
Commune de Nyabikere  
Arrondissement de Rutana  
Commune de Mungu-Kayira

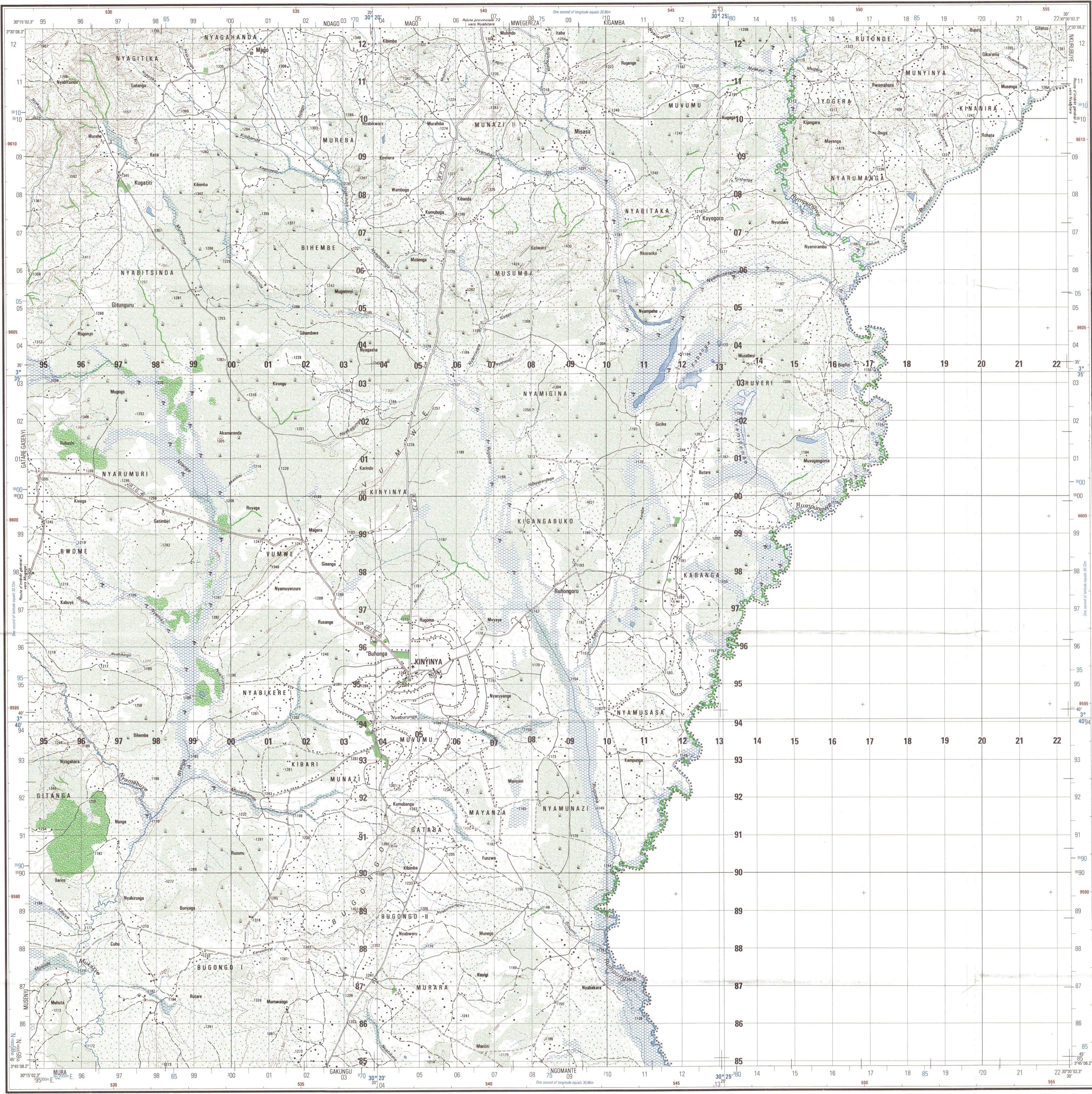
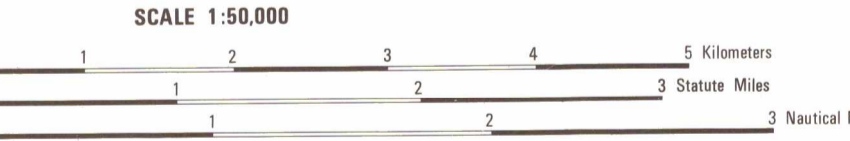


Table of conventional symbols for various features including roads, rivers, buildings, and vegetation. Includes French and Kinyinya descriptions.

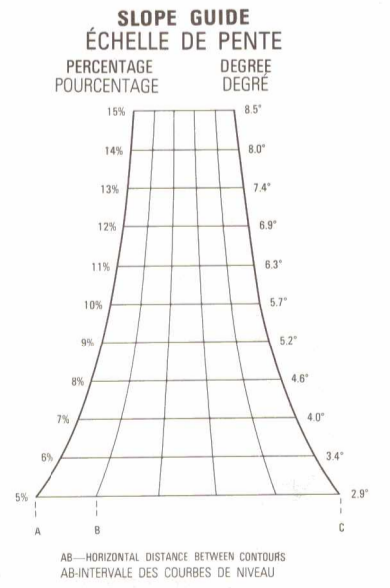
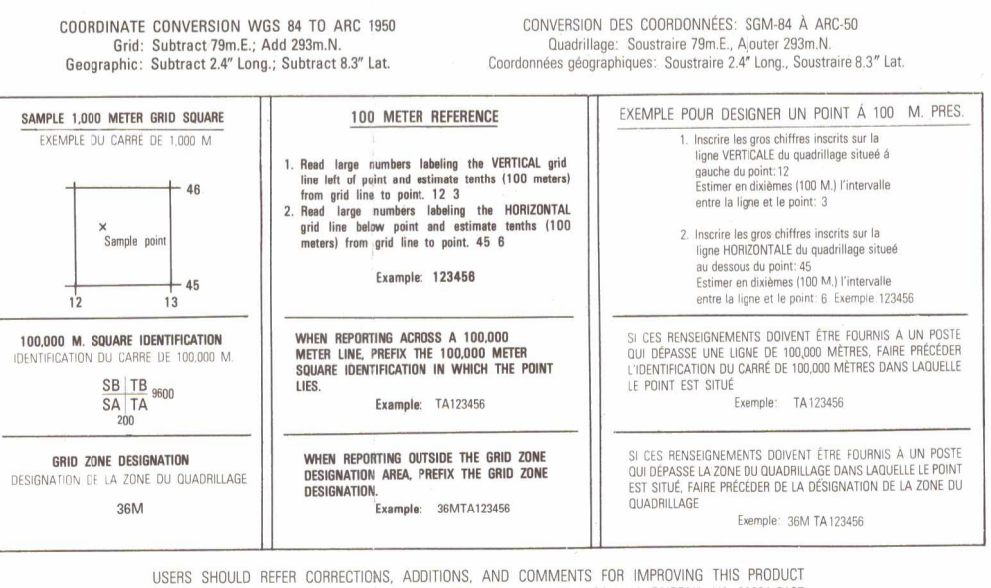


CAUTION  
THIS PRODUCT MAY NOT CONFORM TO THE HORIZONTAL ACCURACY REQUIREMENTS FOR 1:50,000 TOPOGRAPHIC LINE MAPS. EXTREME CAUTION SHOULD BE USED WHEN MAKING MEASUREMENTS.

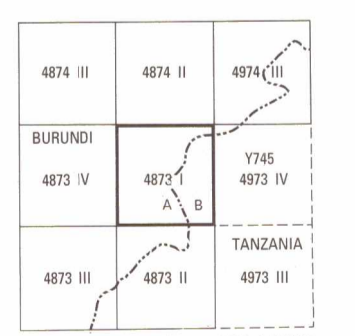
ATTENTION  
SI CE PRODUIT N'EST PAS CONFORME AUX EXIGENCES DE PRÉCISION HORIZONTALE POUR LES CARTES TOPOGRAPHIQUES D'ÉCHELLE 1:50 000, UNE EXTREME PRÉCAUTION DOIT ÊTRE UTILISÉE EN PRENANT LES MESURES.

FOR MILITARY AND HUMANITARIAN PURPOSES

COORDINATE CONVERSION WGS 84 TO ARC 1980  
CONVERSION DES COORDONNÉES WGS 84 À ARC 1980  
PROJECTION: UTM  
PROJECTION: UTM



ADJOINING SHEETS  
TABLEAU SYNOPTIQUE DES FEUILLES



NOTE: There are two series overlapping in this area. Each is represented within the shaded area of coverage. EXAMINE THE AREA OF SHEET 4873 I. A is covered by Series Z724, and B is covered by Series Y724.