

Vertical aerial photo coverage: 1973
Census photogrammetric interpretation: I.C.G.C., 1928-1955, S.T.A., 1976
Delineation: 1980
Census interpretation: interpretation, redrawing of positions, redrawing boundaries
Aeromagnetic interpretation: 1980
Rectification photogrammetric: 1981
Photogrammetric on the terrain: 1981
Elevation of contours: 20 meters
Contour interval: 20 meters

Établi par :
L'INSTITUT GÉOGRAPHIQUE NATIONAL - FRANCE
136 bis, rue de Grenelle 75700 Paris
en collaboration avec :
L'INSTITUT GÉOGRAPHIQUE DU BURUNDI
(B.P. 331 Bujumbura)
Financement de :
FONDUS D'AIDE ET DE COOPÉRATION DE LA RÉPUBLIQUE FRANÇAISE
Nouvelle édition : 1983

BUJUMBURA

Province: chief town, boundary
Provinces: chief town, limits
Intars: chief town, enable

GITEGA

Province: chief town, boundary
Provinces: chief town, limits
Intars: chief town, enable

MAKAMBA

Province: chief town, boundary
Provinces: chief town, limits
Intars: chief town, enable

KABEZI

Province: chief town, boundary
Provinces: chief town, limits
Intars: chief town, enable

MBARE

Province: chief town, boundary
Provinces: chief town, limits
Intars: chief town, enable

MURURE GITERA RUSUKA

Province: chief town, boundary
Provinces: chief town, limits
Intars: chief town, enable

RÉPUBLIQUE DU BURUNDI

Province: chief town, boundary
Provinces: chief town, limits
Intars: chief town, enable

Province de Ngozi

Arrondissement de Kanyana
1 - Commune de Bange
2 - Commune de Cakobaho
3 - Commune de Bange

Province de Murumvye

Arrondissement de Murumvye
4 - Commune de Ngozi
5 - Commune de Bujumbura
6 - Commune de Ngozi
7 - Commune de Ngozi
8 - Commune de Ngozi

Province de Gitega

Arrondissement de Gitega
9 - Commune de Ngozi
10 - Commune de Ngozi

Province de Makamba

Arrondissement de Makamba
11 - Commune de Ngozi
12 - Commune de Ngozi

Province de Kibungo

Arrondissement de Kibungo
13 - Commune de Ngozi
14 - Commune de Ngozi

Province de Kirundi

Arrondissement de Kirundi
15 - Commune de Ngozi
16 - Commune de Ngozi

Province de Mwaro

Arrondissement de Mwaro
17 - Commune de Ngozi
18 - Commune de Ngozi

Province de Gitega

Arrondissement de Gitega
19 - Commune de Ngozi
20 - Commune de Ngozi

Province de Ngozi

Arrondissement de Ngozi
21 - Commune de Ngozi
22 - Commune de Ngozi

Province de Ngozi

Arrondissement de Ngozi
23 - Commune de Ngozi
24 - Commune de Ngozi

Province de Ngozi

Arrondissement de Ngozi
25 - Commune de Ngozi
26 - Commune de Ngozi

Province de Ngozi

Arrondissement de Ngozi
27 - Commune de Ngozi
28 - Commune de Ngozi

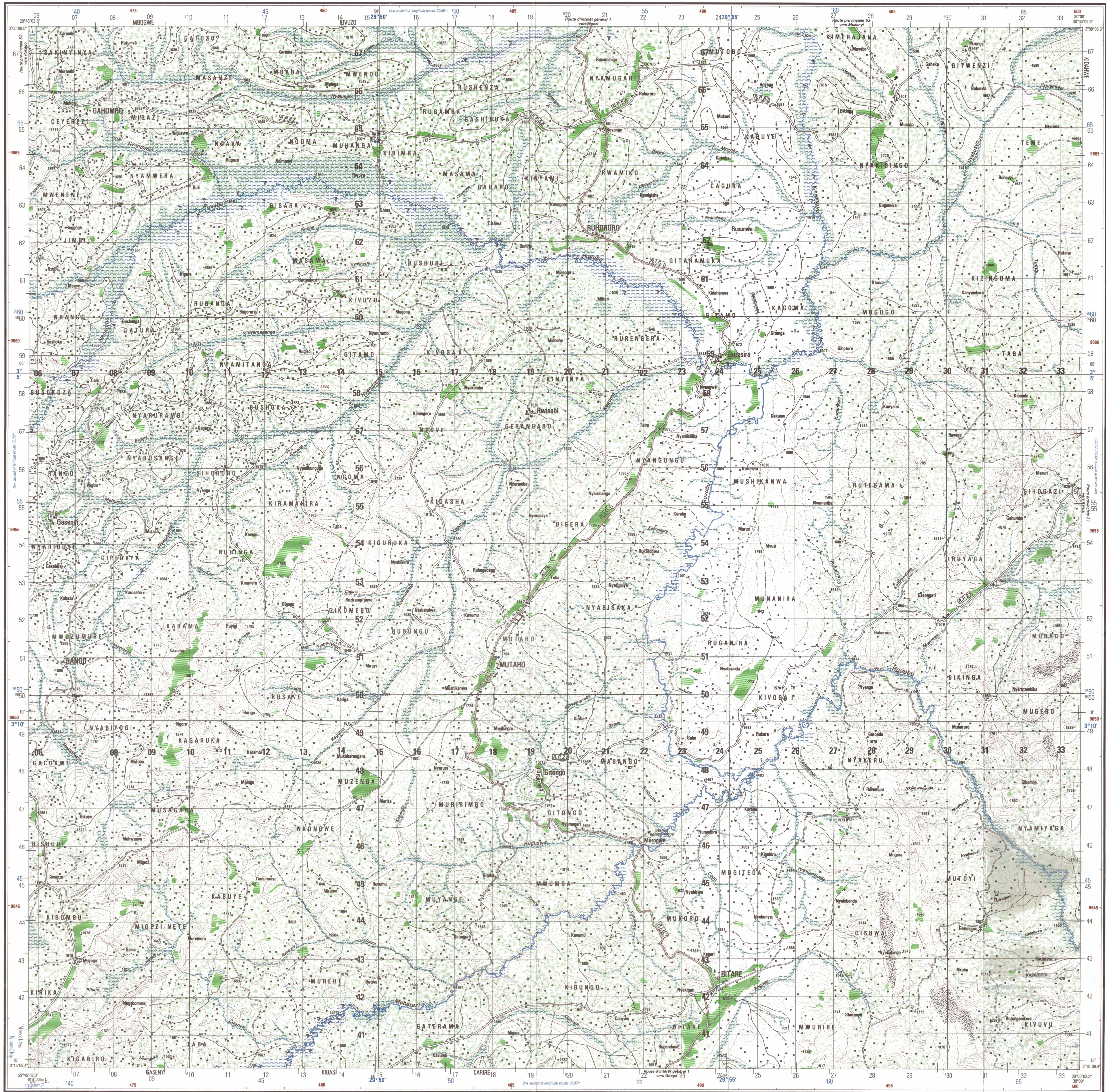
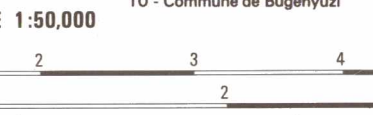


Table of conventional symbols for various features like roads, rivers, and buildings.

Table of conventional symbols for various features like roads, rivers, and buildings.

Table of conventional symbols for various features like roads, rivers, and buildings.

Table of conventional symbols for various features like roads, rivers, and buildings.



Printed and published by the Defense Mapping Agency
Photographic Topographic Center, Bethesda, MD

CAUTION
THIS PRODUCT MAY NOT CONFORM TO THE HORIZONTAL ACCURACY REQUIREMENTS FOR 1:50,000 TOPOGRAPHIC LINE MAPS. EXTREME CAUTION SHOULD BE USED WHEN MAKING MEASUREMENTS.

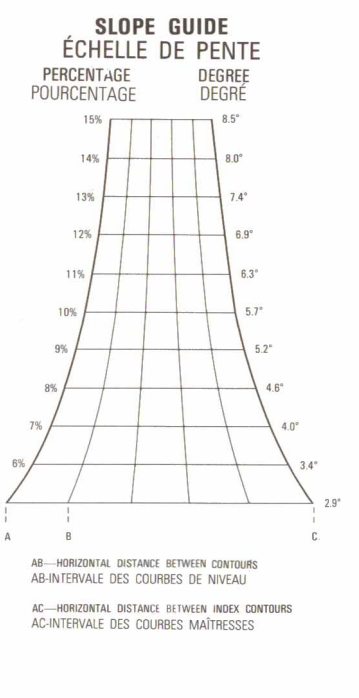
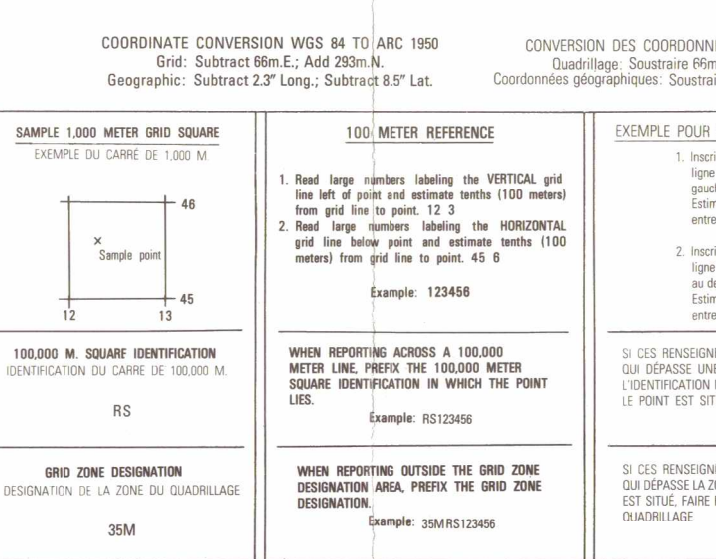
ATTENTION
SI CE PRODUIT NE PAS CONFORME AUX DEMANDES DE PRÉCISION HORIZONTALE POUR LES CARTES TOPOGRAPHIQUES D'ÉCHELLE 1:50,000, UN EX-TRÊME SOIN DOIT ÊTRE UTILISÉ EN PRENANT LES MESURES.

FOR MILITARY AND HUMANITARIAN PURPOSES

LIMITED DISTRIBUTION: Distribution authorized to the Department of Defense, U.S. GPO contract and to U.S. Government agencies receiving data from the publisher of the Director, Defense Mapping Agency, 30 May 1983. Other users must be referred to Headquarters, DMA, 2735 5th Avenue, Fort Belvoir, CO 80504.

USERS SHOULD REFER TO THE NATIONAL ANTI-CORRUPTION AND COMPLIANCE ACT FOR IMPROVING THE PRODUCT TO DIRECTOR, DEFENSE MAPPING AGENCY, ATTN: PL 8613 LEE HIGHWAY, HARRIS, TX 77033-3337

MUTAHO, BURUNDI 4774 I Z724 EDITION 1-DMA



ADJOINING SHEETS TABLEAU SYNOPTIQUE DES FEUILLES showing a grid of map sheets.

DMASSTOCK# Z724X4774I