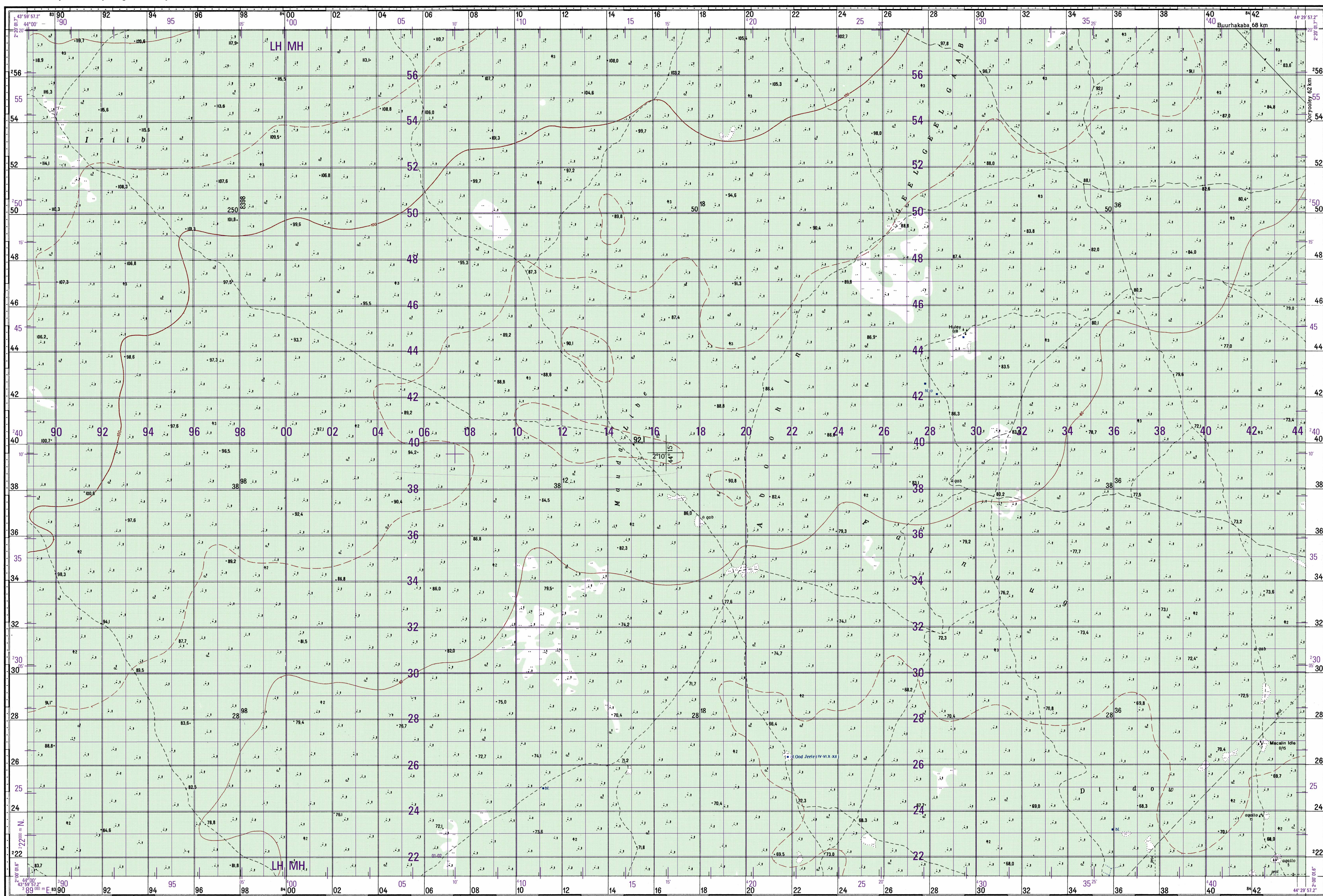


Jamhuuriyada Demuqraadiga Soomaaliyeed

HULEY

One second of longitude equals 30.50m



Jankeer 1975 galbeed 1°44'(0-29). Dhawaanshada dhexe mudiyaanka galbeed 0°02'(0-0). Marka lasaaro kombaska xariga fertiikalka ee shabaqa koordinaadka, ka duruga dhexe ee falaaadha magnetiikada galbeed 1°42'(0-28). Ilaabedka janjerta sanadka galbeed 0°01'(0-00). Saxida xagalaha jihada marka loo gudbayo asimuka magnetiikada ku dard (0-28). Tuseyaalbio dhexdood wuxu ku tusayaa qaybinta xagal-cabirka (hal qayb oo xagal-cabirka=3.6).

CONTOUR INTERVAL 20 METERS

SUPPLEMENTARY CONTOURS TO METERS  
GRID: .....1,000 METER UTM ZONE 38, WORLD GEODETIC SYSTEM 1984, ELLIPSOID, WORLD GEODETIC SYSTEM 1984 DATUM (PURPLE NUMBERED LINES)  
2,000 METER GAUSS-KRUGER ZONE 8, MASSIFORNY ELLIPSOID, ARKADYE DATUM (BLACK NUMBERED LINES)  
PROJECTION: GAUSS-KRUGER (WGS 84 CORNER VALUES IN PURPLE)  
VERTICAL DATUM: .....MEAN SEA LEVEL  
HORIZONTAL DATUM: .....WORLD GEODETIC SYSTEM 1984  
REPRINTED BY NIMA 01-02

COORDINATE CONVERSION WGS 84 TO AFGOYE  
Geographic: Add 2.8° Long, Subtract 1.6° Lat.



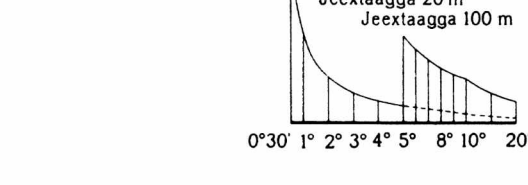
Prepared and published by the Defense Mapping Agency Hydrographic/Topographic Center Bethesda, Md.

Table of adjoining sheets. The table shows a grid of sheet numbers: NA-38-52, NA-38-53, NA-38-54, NA-38-64, NA-38-65 (highlighted), NA-38-66, NA-38-76, NA-38-77, NA-38-78.

LIMITED REVISIONS IN PURPLE AS OF 1992  
Map information as of 1987

- Points: a) Geodetic / Jodentobos b) Astronomic / Amsuudal c) Supplementary / Dibbas ateynka
- Buildings / Dadaayn b) Family dwellings / Jaaso
- Grass roof huts and Somali nomad houses / Madafu (yo taqay)
- Mosque / Masjid
- Gas station / Xop kama
- Windmill / Moteer hawo
- Wind measuring station / Raga hawo
- Large airfield / Gogoyin daryada b) Small airfield / Gogoyin-yeyar
- Water tanks / Hoona biyo
- Graves / Qaboo
- Hard surface highway, 3 meters wide / Hoona biyo (jedno) yo kadole dhowr 3 mita ku badan b) Highway under construction / Hoona biyo dhowrka socon
- Loose surface road, 3 meters wide / Hoona biyo (jedno) yo kadole dhowr 3 mita ka yar b) Road under construction / Wadoyo hogaqoqoqo socon
- Unimproved road (dirt) / Xopno b) Track / Dibayn c) Trail / Madayn
- Geological fault / Jeedmo jeeji
- Telegraph - Telecommunications lines / Sijiy wariisiga b) Power transmission line / Amatooyi
- Perennial streams and lakes / Wadoyo (yo hawo) iyo qayb b) Seasonal streams and lakes / Wadoyo (yo hawo) qayb
- Canals / Kalyo b) Canals under construction / Kalyo dhowrka socon
- Water conduits / a) Surface / Dhulkormann b) Underground / Aaso
- Wells / Ceel
- Wind driven wells / Ceel motor hawo b) Motor driven wells / Ceel motor
- Rainpools, ponds, reservoirs / Waa, balye, borkado
- Springs: a) Natural / Hoona biyo b) Man-made / Madafu
- Anchorage / Bannaadgomoos b) Pier, dock / Amatooyi c) Jetty, breakwater / Gole
- Underwater (submerged) / Meqsoos b) Water level / Bafkooqo c) Above water / Caray
- Reefs / Shooqooye: a) Underwater / Meqsoos b) Above water / Caray
- Shoal bank / Baas baas b) Underwater mounds, reefs / Qayb bafkooqooye

- Bathymetric contour / Sijiy madaalaha b) Sounding point / Ateynka rool
- Lighthouses / Muzoos b) Signal light / Xidid toos
- Water retaining wall, dyke / Byo ariis
- Rock outcrop / Dhadha (hawaad) b) Prominent stone / Dhaqan (hawaad)
- Pits, caves / Gool b) Kull / Meqsoo
- Sinkholes / Ragle b) Caves / Hamaar
- Isolated stone / Dhaqan (hawaad) b) Stone and heights / Dhaqan (hawaad)
- Sea / Shiiqo: a) Fine sand / Ceel (yo taqay) b) Shallow / Dhaqan (yo taqay)
- Trench / Dasso b) Depression / Gool
- Horizontal contours / Kontaada (horizontaali): a) Index / Aso b) Intermediate / Kontaada bar ah c) Supplementary / Gogoyin d) Spot elevation in meters / 50.2 - ateynka (raqo)
- Rocky slope / Kalo b) Cliff, escarpment / Qayb c) Terrace / Gole
- Pass, saddle / Xaamo b) Ravine (dry) / Tapp
- Thorny woods / Haded gool b) Tree height and diameters in meters / Haded gool
- Hedges / Ceel: a) Rows of trees / Haded b) Grass, sedge / Doo
- Conspicuous tree / Gool (hawaad) b) Lone tree / Gool
- Dense palms / Shaar shaar b) Scattered palms / Ceel (hawaad)
- Thorny savanna / Xop gool b) Thorny woods / Doo gool c) Thorny trees / Doo gool d) Thorny trees and groups of short trees / Gool gool (yo taqay)
- Bamboo / Bako b) Papyrus / Bakiis
- Orchards / Bees meed b) Plantation, garden / Baas
- Cultivation / Bees washad: a) Small trees / Gool gool b) Grass / Ceel c) Unknown / Waly
- Rice / Baki b) Enclosure for crops or livestock / Gool c) Degraded savanna / Doo dhaas
- Ground cover: a) Sparse grass / Tapp b) Dense grass / Dappal
- Stone surface / Doo taal b) Bush and grass / Doo taal



- Sand / Ceel: a) Sand mounds / Bared b) Lateral dunes / Ceel c) Crescent dunes / Baas
- Boundary / Ceel: a) Region / Gool b) Game reserve, wild life sanctuary / Xopno ogared
- Maamuika Magaalo Madaxada: MUQDISHO, HARGEYSA, JIRRIIBAN
- Magaalooyinka dadku degganyahay: AFGOOYE, CEEL AFWEYNE, TALEEX, LAANTABUR
- Xalin: Small dwellings / Buulboym: a) 1/2 b) 1/3 c) 1/4 d) 1/5

Maabka waxaa lagu soo saaray nidaamka teleofologaraamtriyaadka sanadka 1975 Waxaa la dasabay 1976.

Sansankii Gaaws, Ellibsoyka Karasowski

CAUTION: THIS PRODUCT MAY NOT CONFORM TO THE HORIZONTAL ACCURACY REQUIREMENTS FOR 1:100,000 TOPOGRAPHIC LINE MAPS. EXTREME CAUTION SHOULD BE USED WHEN MAKING MEASUREMENTS.

100 METER REFERENCES: 1. Read large numbers labeling the VERTICAL grid line left of point and estimate tenths (100 meters) from grid line to point 12.3. 2. Read large numbers labeling the HORIZONTAL grid line below point and estimate tenths (100 meters) from grid line to point 45.6. Example: 123456

WHEN REPORTING ACROSS A 100,000 METER LINE, PREFIX THE 100,000 METER SQUARE IDENTIFICATION IN WHICH THE POINT LIES. Example: LH23456

WHEN REPORTING ACROSS THE GRID ZONE DESIGNATION AREA, PREFIX THE GRID ZONE DESIGNATION. Example: 38N123456