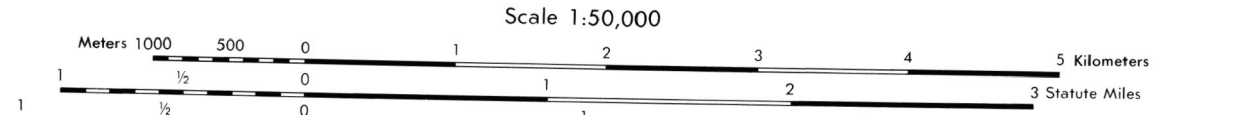


Prepared by the U. S. Geological Survey for publication by the Defense Mapping Agency, Hydrographic/Topographic Center, Washington, D. C.

LEGEND

- MAP INFORMATION AS OF 1978**
ON THIS MAP, A LANE IS GENERALLY CONSIDERED AS BEING A MINIMUM OF 2.5 METERS (8 FEET) IN WIDTH. IN DEVELOPED AREAS ONLY THROUGH ROADS ARE CLASSIFIED.
- | | |
|--|---|
| <ul style="list-style-type: none"> Divided highway with median strip Primary, all weather, hard surface Secondary, all weather, hard surface Light duty, all weather, hard or improved surface Fair or dry weather, unimproved surface Trail Route markers: Interstate, Federal, State Bridge with superstructure, Without superstructure RAILROADS (Standard gauge 1.44m - 4'8 1/2") Single track Multiple track Nonoperating Railroad station, Location known, Location unknown Car line Railroad bridge with superstructure, Without superstructure Tunnel, Highway, Railroad | <ul style="list-style-type: none"> Power transmission line Buildings Structures Church, School Power substation Windmill, Watermill Well, Tank Mine shaft Open pit mine or quarry Horizontal control station Bench mark, non-monumented Bench mark, non-monumented Spot elevations in meters Level, rim, dike Bluffs, cliffs Woodland Scattered trees, Scrub Vineyard, Orchard, plantation Intermittent lake, Dam, Earthfill, Masonry Stream, Perennial, Intermittent Marsh, swamp Small rapids, Small falls Large rapids, Large falls |
|--|---|



ELEVATIONS IN METERS

CONTOUR INTERVAL 40 METERS
SUPPLEMENTARY CONTOURS 20 METERS

SPHEROID: CLARKE 1886
GRID: 10,000 METER UTM ZONE 12 (BLACK NUMBERED LINES)
10,000 FOOT UTM STATE PLANE COORDINATE SYSTEM
CENTRAL ZONE (BLACK TICKS)

PROJECTION: NATIONAL GEODETIC DATUM OF 1929
HORIZONTAL DATUM: NORTH AMERICAN DATUM OF 1929
CONTROL: U.S. GEOLOGICAL SURVEY
PREPARED BY: U.S. GEOLOGICAL SURVEY
Reprinted by NMMA (11-01)

FOR SALE BY U. S. GEOLOGICAL SURVEY, DENVER, COLORADO 80225
OR RESTON, VIRGINIA 22092

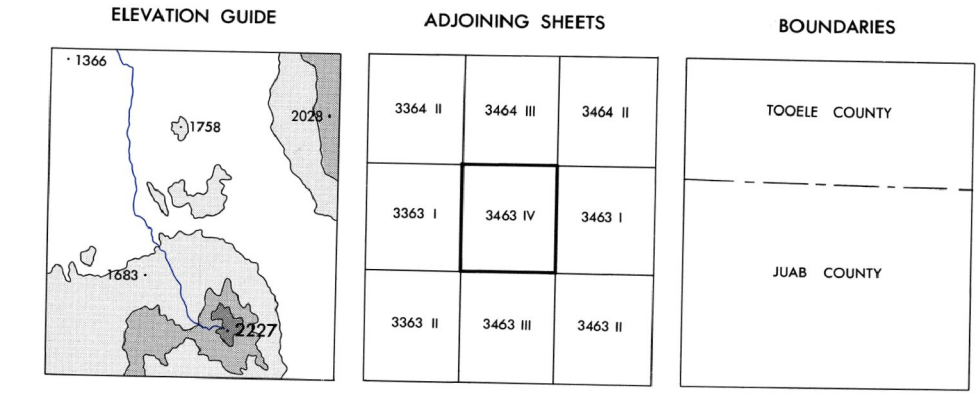
100 METER REFERENCE

1. Read large numbers labeling the VERTICAL grid line left of point and estimate tenths (100 meters). Example: 12345

2. Read large numbers labeling the HORIZONTAL grid line below point and estimate tenths (100 meters) from grid line to point. Example: 12345

WHEN REPORTING OUTSIDE THE 100,000 METER SQUARE AREA IN WHICH THE POINT LIES, PREFIX THE 100,000 METER SQUARE IDENTIFICATION. Example: UV123456

WHEN REPORTING OUTSIDE THE GRID ZONE DESIGNATION AREA IN WHICH THE POINT LIES, PREFIX THE GRID ZONE DESIGNATION. Example: 12SU123456



USERS SHOULD REFER TO CORRECTIONS, ADDITIONS, AND COMMENTS TO THE NMMA OPERATIONAL HELP DESK: 1-800-452-0888; COMMERCIAL: 314-283-4884; DSN: 893-4884. OR WRITE TO: DIRECTOR, NATIONAL IMAGERY AND MAPPING AGENCY, ATTN: ES, MAIL STOP L-88, 4600 SANGANOR ROAD, BETHESDA, MD 20815-5003.