

Prepared by the U.S. Geological Survey for publication by the Defense Mapping Agency Hydrographic Topographic Center, Washington, D.C.

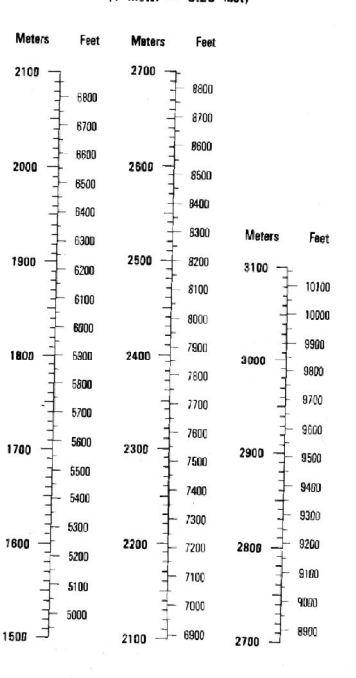
MAP INFORMATION AS OF 1984

LEGEND

CAUTION: ALL TELEPHONE AND ELECTRIC SERVICE LINES ARE NOT SHOWN. A LANE ON THIS MAP IS CONSIDERED TO BE 25 METERS WIDE. IN DEVELOPED AREAS ONLY THROUGH ROADS ARE CLASSIFIED. THERE MAY BE PRIVATE INHOLDINGS WITHIN THE BOUNDARIES OF THE NATIONAL OR STATE RESERVATIONS SHOWN ON THIS MAP.

- ROADS**
- Divided highway with median strip
- Primary, all weather, hard surface
- Secondary, all weather, hard surface
- Light duty, all weather, hard or improved surface
- Fair or dry weather, unimproved surface
- Trail
- State markers: Interstate, Federal, State
- Bridge
- RAILROADS (Standard gauge 1.44m - 4'8 1/2")
- Single track
- Multiple track
- Nonoperating
- National station: Location known; Location unknown
- Car line
- Railroad bridge
- Tunnel
- National, with monument
- State, territory
- County, parish
- City, township, town
- Unincorporated city, village, town
- Reservation: National, State, Military
- Power transmission line
- Building
- Structure
- Church, school
- Power substation
- Windmill; Watermill
- Well; Tank
- Mine shaft
- Shed or mill or quarry
- Historical control station
- Bench mark, monument
- Bench mark, non-monumented
- Spot elevations in meters
- Levers, mms, #165
- Bluffs, cliffs
- Woodland
- Scattered trees: Scrub
- Vineyard; Orchard; plantation
- Interriment lake: Dam; Embankment; Masonry
- Straum; Penstock; Intermittent
- Marsh, swamp
- Small trails; Large falls
- Small rapids; Large rapids

CONVERSION GRAPH



ELEVATIONS IN METERS

CONTOUR INTERVAL 40 METERS

ELLIPSOID: GEODETIC REFERENCE SYSTEM BY GRID
 PROJECTION: 5000-METER STATE GRID TICKS, UTM (CENTRAL AND SOUTH ZONES)
 TRANSVERSE MERCATOR
 VERTICAL DATUM: NATIONAL GEODETIC DATUM OF 1929
 HORIZONTAL DATUM: NORTH AMERICAN DATUM OF 1983 (NAD 83)
 CONTROL BY: U.S. AND INDIVIDUAL
 PUBLISHED BY: U.S. GEOLOGICAL SURVEY
 DMAPHC 1-81

Reprinted by NIMA 05-02
 FOR SALE BY U.S. GEOLOGICAL SURVEY, DENVER, COLORADO 80225
 OR RESTON, VIRGINIA 22092

SAMPLE 1:50,000 GRID SQUARE	46
GRID ZONE DESIGNATION	12S
100,000 M. SQUARE IDENTIFICATION	12S 46
GRID ZONE DESIGNATION	12S

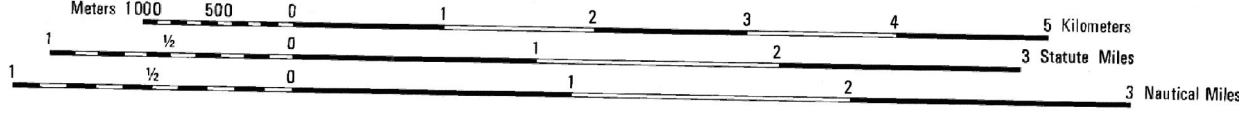
100-METER REFERENCE

1. Read large numbers leading to vertical grid line left of point and estimate tenth (100 meters) from grid line to point. Example: 122455

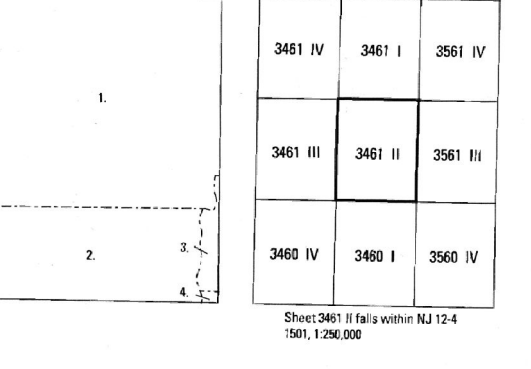
2. Read large numbers leading to horizontal grid line below point and estimate tenth (100 meters) from grid line to point. Example: 122456

3. When reporting across a 100-METER LINE, PREFIX THE 100-METER SQUARE IDENTIFICATION BY WHICH THE POINT LIES. Example: 12S0122456

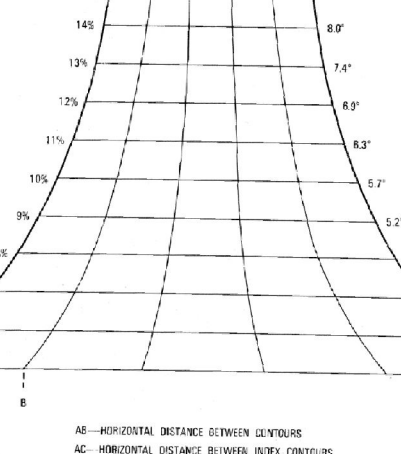
4. When reporting across the GRID ZONE DESIGNATION AREA PREFIX THE GRID ZONE DESIGNATION. Example: 12S0122456



BOUNDARIES



SLOPE GUIDE



ELEVATION GUIDE

