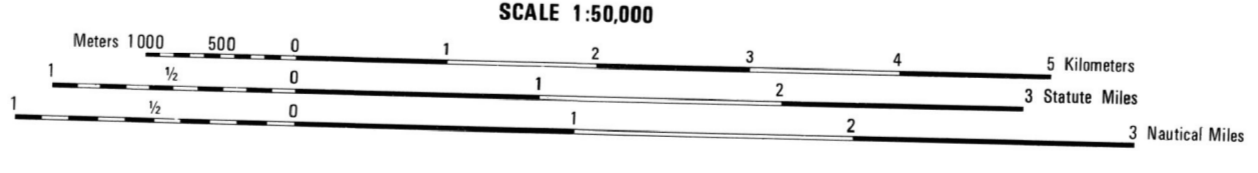


Prepared by the U.S. Geological Survey for publication by the Defense Mapping Agency Hydrographic Topographic Center, Washington, D.C.
 MAP INFORMATION AS OF 1985.

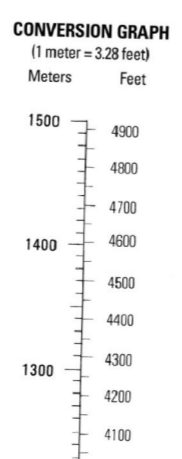


ELEVATIONS IN METERS
 CONTOUR INTERVAL 5 METERS

LEGEND

CAUTION: ALL TELEPHONE AND ELECTRIC SERVICE LINES ARE NOT SHOWN.
 A LANE ON THIS MAP IS CONSIDERED TO BE 3.5 METERS WIDE.
 IN DEVELOPED AREAS ONLY THROUGH ROADS ARE CLASSIFIED.
 THERE MAY BE PRIVATE ENCLOSURES WITHIN THE BOUNDARIES OF THE NATIONAL OR STATE RESERVATIONS SHOWN ON THIS MAP.

ROADS	Power transmission line
Dashed highway with median strip	Buildings
Primary, all weather, hard surface	Structures
Secondary, all weather, hard surface	Church, School
Light duty, all weather, hard or improved surface	Power substation
Fair or dry weather, unpaved surface	Windmill, Watermill
Trail	Well, Tank
Route markers: Interstate, Federal, State	Mine shaft
Bridge	Open pit mine or quarry
RAILROADS (Standard gauge 1.44m - 4'8 1/2")	Historical control station
Multiple track	BM X 219.2
Single track	Bench mark, non-measured
Nonoperating	Bench mark in meters
Railroad station: Location known, Location unknown	Spot elevations in meters
Car line	Leaves, vines, filices
Railroad bridge	Bluffs, cliffs
Tunnel: Highway, Railroad	Woodland
BOUNDARIES	Scattered trees: Scrub
National, with monument	Vineyard: Orchard, plantation
State territory	Intermittent lake: Dam, Earthen, Masonry
County, parish	Stream: Perennial, Intermittent
Civil township, town	Marsh, swamp
Incorporated city, village, town	Small falls: Large falls
Reservation: National, State, Military	Small rapids: Large rapids



SPHEROID: 1,000-METER UTM ZONE 12 (BLACK NUMBERED LINES)
 GRID: 10,000 FOOT STATE GRID TICKS, UTM (CENTRAL ZONE)
 PROJECTION: TRANSVERSE MERCATOR
 VERTICAL DATUM: NATIONAL GEODETIC VERTICAL DATUM OF 1929
 HORIZONTAL DATUM: 1983 NORTH AMERICAN DATUM
 CONTROL BY: U.S. GEOLOGICAL SURVEY
 PREPARED BY: U.S. GEOLOGICAL SURVEY

Reprinted by NIMA 5-99
 FOR SALE BY U.S. GEOLOGICAL SURVEY
 DENVER, COLORADO 80225, OR RESTON, VIRGINIA 22092

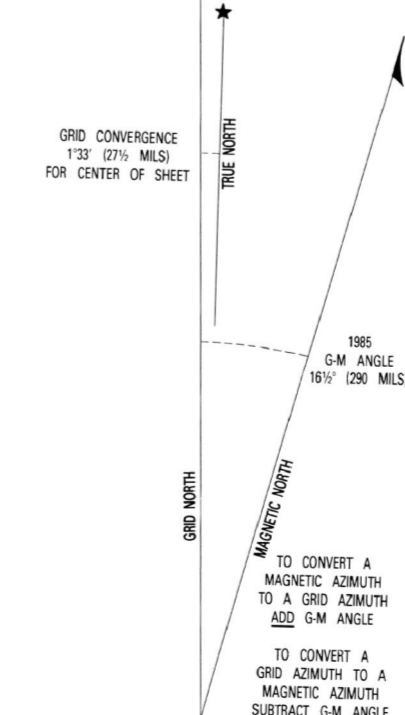
100 METER REFERENCE

1. Read large numbers labeling the VERTICAL grid line left of point and estimate tenth (100 meters) from grid line to point. Example: 12345

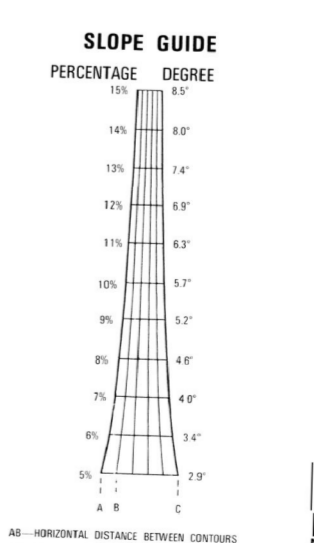
2. Read large numbers labeling the HORIZONTAL grid line below point and estimate tenth (100 meters) from grid line to point. Example: 12345

WHEN REPORTING ACROSS A 100,000 METER LINE, PREFIX THE 100,000 METER SQUARE IDENTIFICATION IN WHICH THE POINT LIES.
 Example: 12U123456

WHEN REPORTING ACROSS THE GRID ZONE DESIGNATION AREA, PREFIX THE GRID ZONE DESIGNATION.
 Example: 12U123456



THIS MAP IS RED-LIGHT READABLE



BOUNDARIES

Tooele County

ADJOINING SHEETS

3366 II	3366 III	3366 IV
3365 I	3365 IV	3365 II
3365 III	3365 II	3365 I

