

Prepared by the U.S. Geological Survey for publication by the Defense Mapping Agency Hydrographic/Topographic Center, Washington, D.C.

MAP INFORMATION AS OF 1984-85.

**LEGEND**

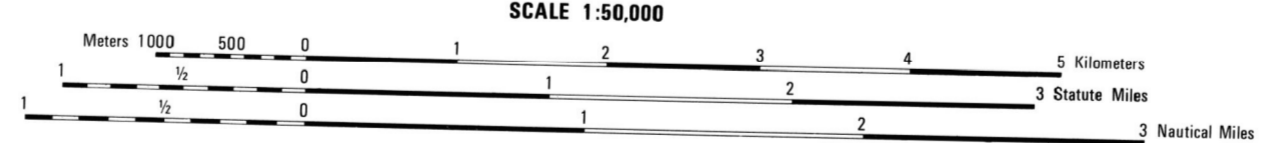
CAUTION: ALL TELEPHONE AND ELECTRIC SERVICE LINES ARE NOT SHOWN.

A LANE ON THIS MAP IS CONSIDERED TO BE 25 METERS WIDE.

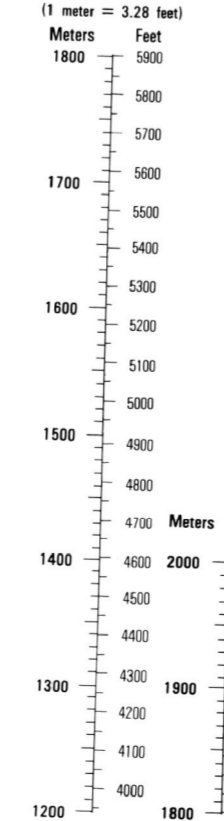
IN DEVELOPED AREAS ONLY THROUGH ROADS ARE CLASSIFIED.

THERE MAY BE PRIVATE INCLUSIONS WITHIN THE BOUNDARIES OF THE NATIONAL OR STATE RESERVATIONS SHOWN ON THIS MAP.

- |   |  |
|---|--|
| <ul style="list-style-type: none"> <li>ROADS</li> <li>Divided highway with median strip</li> <li>Primary, all weather, hard surface</li> <li>Secondary, all weather, hard surface</li> <li>Light duty, all weather, hard or improved surface</li> <li>Fair or dry weather, unimproved surface</li> <li>Tail</li> <li>Route markers: Interstate, Federal, State</li> <li>Bridge</li> <li>RAILROADS (Standard gauge 1.44m - 4'8 1/2")</li> <li>Single track</li> <li>Multiple track</li> <li>Nonoperating</li> <li>Railroad station: Location known; Location unknown</li> <li>Car line</li> <li>Railroad bridge</li> <li>Tunnel: Highway, Railroad</li> <li>BOUNDARIES</li> <li>National, with monument</li> <li>State, territory</li> <li>County, parish</li> <li>Civil township, town</li> <li>Incorporated city, village, town</li> <li>Reservation: National, State, Military</li> </ul> | <ul style="list-style-type: none"> <li>Power transmission line</li> <li>Buildings</li> <li>Structures</li> <li>Church, school</li> <li>Power substation</li> <li>Windmill; Watermill</li> <li>Well; Tank</li> <li>Mine shaft</li> <li>Open pit mine or quarry</li> <li>Horizontal control station</li> <li>Bench mark, monumented</li> <li>Bench mark, non-monumented</li> <li>Spot elevations in meters</li> <li>Levees, rims, dikes</li> <li>Bluffs, cliffs</li> <li>Woodland</li> <li>Scattered trees: Scrub</li> <li>Vineyard; Orchard; plantation</li> <li>Intermittent lake; Dam; Earthen; Masonry</li> <li>Stream; Perennial; Intermittent</li> <li>Marsh, swamp</li> <li>Small falls; Large falls</li> <li>Small rapids; Large rapids</li> </ul> |
|---|--|



**CONVERSION GRAPH**



**ELEVATIONS IN METERS**

CONTOUR INTERVAL 20 METERS

SHERDOL ..... CLARKE 1886  
 GRID ..... 1000-METER UTM ZONE 12 (BLACK NUMBERED LINES)  
 10000 FOOT STATE GRID TICS (UTM CENTRAL ZONE)  
 PROJECTION ..... TRANSVERSE MERCATOR  
 VERTICAL DATUM ..... NATIONAL GEODETIC DATUM OF 1929  
 HORIZONTAL DATUM ..... 1987 NORTH AMERICAN DATUM  
 CONTROL BY ..... U.S. GEOLOGICAL SURVEY  
 PREPARED BY ..... USGS AND ROSKINNA  
 Reprinted by NIMA 05-01

FOR SALE BY U.S. GEOLOGICAL SURVEY  
 DENVER, COLORADO 80225, OR RESTON, VIRGINIA 22092

**100 METER REFERENCE**

1. Read large numbers labeling the VERTICAL grid line left of point and estimate tenths (100 meters) from grid line to point. 45.6

2. Read large numbers labeling the HORIZONTAL grid line below point and estimate tenths (100 meters) from grid line to point. 45.6

Example: 123456

WHEN REPORTING ACROSS A 100.000 METER LINE, PREFIX THE 100.000 METER SQUARE IDENTIFICATION IN WHICH THE POINT LIES.

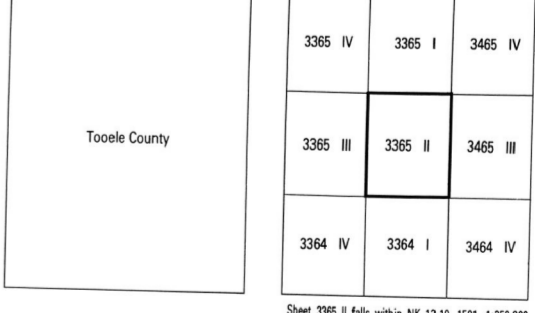
Example: U7123456

WHEN REPORTING ACROSS THE GRID ZONE DESIGNATION AREA, PREFIX THE GRID ZONE DESIGNATION.

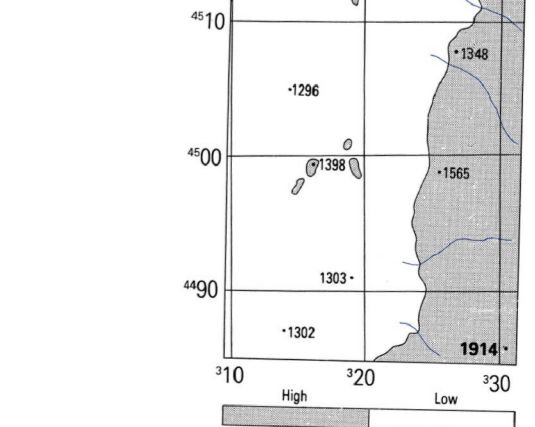
Example: 17UW123456

USERS SHOULD REFER CORRECTIONS, ADDITIONS, AND COMMENTS TO THE NIMA OPERATIONAL HELP DESK: 1-800-455-6898 COMMERCIAL 314-263-4864 DSN 862-4864, OR WRITE TO: DIRECTOR, NATIONAL INVENTORY AND MAPPING AGENCY, ATTN: ES, MAIL STOP L-88, 4600 SANGAMORE ROAD, BETHESDA, MD 20818-5003

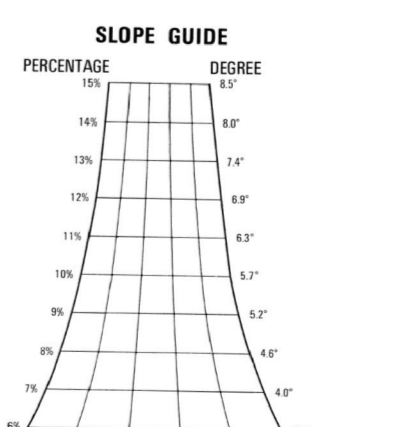
**BOUNDARIES**



**ELEVATION GUIDE**



THIS MAP IS RED-LIGHT READABLE



NSN 7643014056236  
 NIMA Ref No V797X33652  
 ED. NO 001