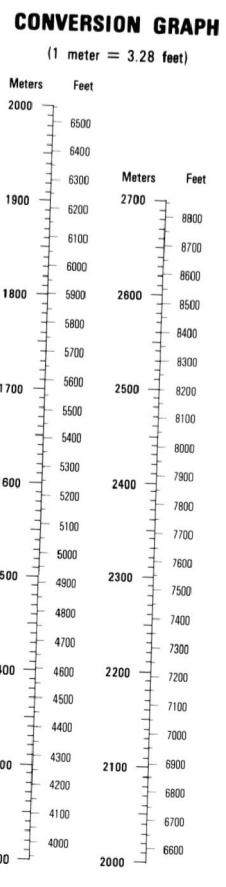


Prepared by the U.S. Geological Survey for publication by the Defense Mapping Agency Hydrographic Topographic Center, Washington, D.C.
 MAP INFORMATION AS OF 1986

- LEGEND**
- CAUTION: ALL TELEPHONE AND ELECTRIC SERVICE LINES ARE NOT SHOWN.
 A LINE ON THIS MAP IS CONSIDERED TO BE 2.5 METERS WIDE.
 IN DEVELOPED AREAS ONLY THROUGH ROADS ARE CLASSIFIED.
 THERE MAY BE PRIVATE ENCLOSURES WITHIN THE BOUNDARIES OF THE NATIONAL OR STATE RESERVATIONS SHOWN ON THIS MAP.
- ROADS**
 - Divided highway with median strip
 - Primary, all weather, hard surface
 - Secondary, all weather, hard surface
 - Light duty, all weather, hard or improved surface
 - Fair or dry weather, unimproved surface
 - Trail
 - RAILROADS** (Standard gauge 1.44m - 4 9/16")
 - Single track
 - Multiple track
 - Nonoperating
 - Railroad station: Location known; Location unknown
 - Car line
 - Railroad bridge
 - Tunnel; Highway; Railroad
 - BOUNDARIES**
 - National, with monument
 - State, territory
 - County, parish
 - Civil township, town
 - Incorporated city, village, town
 - Reservation: National, State, Military
 - Other Features**
 - Power transmission line
 - Buildings
 - Structures
 - Church, school
 - Power substation
 - Well, tank, watermill
 - Well, tank, cistern
 - Mine shaft
 - Open pit mine or quarry
 - Horizontal control station
 - Bench mark, monument
 - Bench mark, non-monumented
 - Spot elevations in meters
 - Levee, rock, dike
 - Bluffs, cliffs
 - Woodland
 - Scrubbed trees, scrub
 - Wooded, orchard, plantation
 - Interruption line: Dam; Earthquake; Masonry
 - Stream: Perennial; Intermittent
 - Marsh, swamp
 - Small falls; Large falls
 - Small rapids; Large rapids



ELEVATIONS IN METERS

CONTOUR INTERVAL 40 METERS

SPHEROID: CLARKE 1866
 GRID: 1000 METER UTM ZONE 12 (BLACK NUMBERED TICKS)
 1000 METER UTM ZONE 11 (BLUE NUMBERED TICKS)
 HORIZONTAL DATUM: NATIONAL GEODETIC VERTICAL DATUM OF 1929
 VERTICAL DATUM: 1985 NORTH AMERICAN DATUM
 PROJECTION: TRANSVERSE MERCATOR
 CONTROL BY: U.S. GEOLOGICAL SURVEY
 PREPARED BY: U.S. GEOLOGICAL SURVEY
 PUBLISHED BY: DMAPHC 11-88

FOR SALE BY U.S. GEOLOGICAL SURVEY, DENVER, COLORADO 80225 OR RESTON, VIRGINIA 20192

100-METER REFERENCE

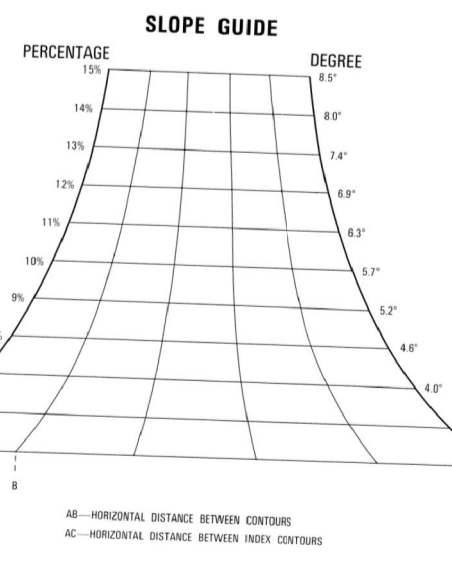
1. Read large numbers labeling the VERTICAL grid line left of spot and estimate tenth (100 meters) from grid line to point 12.3.

2. Read large numbers labeling the HORIZONTAL grid line below spot and estimate tenth (100 meters) from grid line to point 45.9. Example: 123456.

WHEN REPORTING ACROSS A 100-METER LINE, PREFIX THE 100-METER SQUARE IDENTIFICATION IN WHICH THE POINT LIES. Example: TV123456.

WHEN REPORTING OUTSIDE THE GRID ZONE DESIGNATION AREA, PREFIX THE GRID ZONE IDENTIFICATION. Example: 12T.

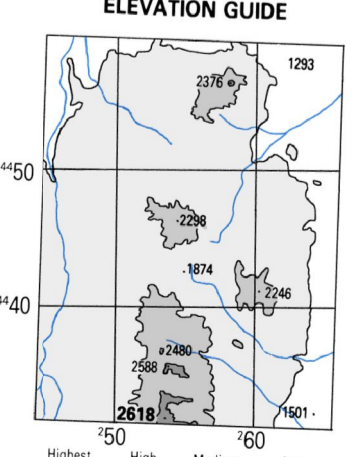
USGS FORM 1000-METER REFERENCE (11-88) (UNCLASSIFIED) (ELECTRONIC MAIL: ENTERPRISE@USGS.GOV) (NATIONAL GEOSPATIAL INTELLIGENCE AGENCY, ATTN: ESC, MAIL STOP 0-40, 8600 SANGAMORE ROAD, BETHESDA, MD 20815-5003)



BOUNDARIES

Township

| | | |
|----------|---------|----------|
| 3264 I | 3264 IV | 3264 I |
| 3264 II | 3264 V | 3264 II |
| 3264 III | 3264 VI | 3264 III |



THIS MAP IS RED-LIGHT READABLE