

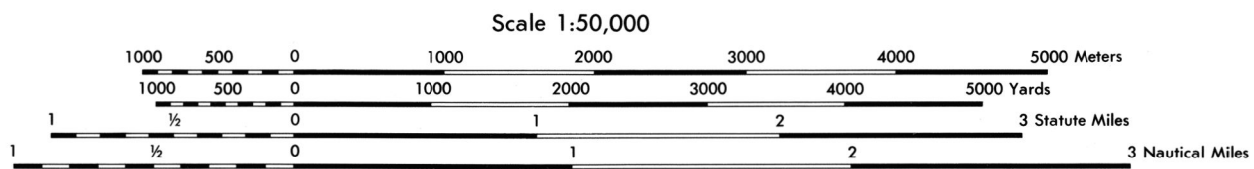
Prepared and published by the Defense Mapping Agency
Topographic Center, Washington, D. C.

LEGEND

COMPILED IN 1976 FROM BEST AVAILABLE SOURCES.

ON THIS MAP, A LANE IS GENERALLY CONSIDERED AS BEING A MINIMUM OF 8 FEET (2.5 METERS) IN WIDTH IN DEVELOPED AREAS, ONLY THROUGH ROADS ARE CLASSIFIED
TINT INDICATES BUILT-UP AREAS IN WHICH ONLY LANDMARK BUILDINGS ARE SHOWN

- | | |
|--|---|
| <p>ROADS</p> <ul style="list-style-type: none"> Divided highway with median strip Primary all weather, hard surface, two or more lanes wide Secondary all weather, hard surface, two or more lanes wide Light duty, all weather, hard or improved surface Fair or dry weather, unimproved surface Trail Route markers: Interstate, Federal, State Route markers: Standard gauge: 4'8 1/2" - 1.44 m. RAILROADS Single track Multiple track Multiple track, non-operating Railroad station: Position known; Position unknown Car line <p>BOUNDARIES</p> <ul style="list-style-type: none"> National State, territory County, parish, municipality Civil township, precinct, town, barrio Incorporated city, village, town, hamlet Reservation: National, state, military Power transmission line | <ul style="list-style-type: none"> Church, school Watermill Windmill, wind pump Mine, vertical shaft Mine, horizontal shaft Open pit mine or quarry, inactive Open pit mine or quarry, active Horizontal control station Bench mark, monumented Bench mark, nonmonumented Spot elevations in feet: Checked, Unchecked Woodland; scrub Vineyard; Orchard Intermittent lake Intermittent lake: Dam Marsh or swamp Rapids; falls Large rapids; large falls |
|--|---|



CONTOUR INTERVAL 40 FEET
SUPPLEMENTARY CONTOURS 20 FEET

SPHEROID: CLARKE 1866
GRID: 1,000 METER UTM ZONE 11 (BLACK NUMBERED LINES)
PROJECTION: TRANSVERSE MERCATOR
VERTICAL DATUM: MEAN SEA LEVEL DATUM 1929
HORIZONTAL DATUM: 1927 NORTH AMERICAN CONTROL BY USCGS AND USCE
Reprinted by NIMA 04-02

USERS SHOULD REFER CORRECTIONS, ADDITIONS, AND COMMENTS TO THE NIMA OPERATIONAL HELP DESK: 1-800-850-COMMERCIAL (216-262) AND 202-861-4816 (IN VOICES TO DIRECTOR, NATIONAL MAPPING AND MAPPING AGENCY, ATTN: ES, MAIL STOP L-01, 4600 SANGAMORE ROAD, BETHESDA, MD 20818-5003)

100 METER REFERENCE

1. Read large numbers labeling the VERTICAL grid line left of point and estimate tenth (100 meters) from grid line to point. 12 3

2. Read large numbers labeling the HORIZONTAL grid line below point and estimate tenth (100 meters) from grid line to point. 45 6

Example: 123456

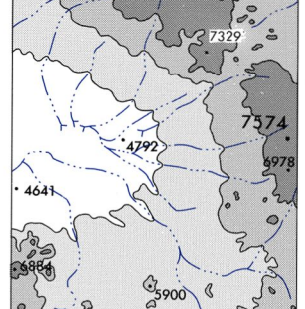
WHEN REPORTING ACROSS A 100,000 METER LINE, PREFIX THE 100,000 METER SQUARE IDENTIFICATION, IN WHICH THE POINT LIES.

Example: NM123456

WHEN REPORTING OUTSIDE THE GRID ZONE DESIGNATION AREA, PREFIX THE GRID ZONE DESIGNATION.

Example: 11SNM123456

ELEVATION GUIDE



ADJOINING SHEETS

2659 I	2659 IV	2659 I
2659 II	2659 III	2659 II
2658 I	2658 IV	2658 I

BOUNDARIES

Nye County