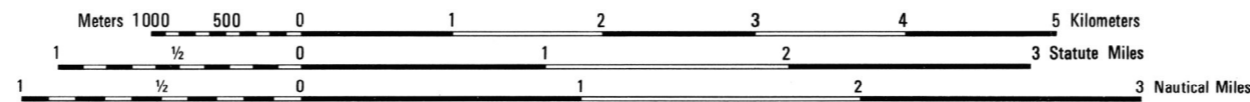


Prepared by the U. S. Geological Survey for publication by the Defense Mapping Agency Hydrographic/Topographic Center, Washington, D. C.
 MAP INFORMATION AS OF 1983.

SCALE 1:50,000

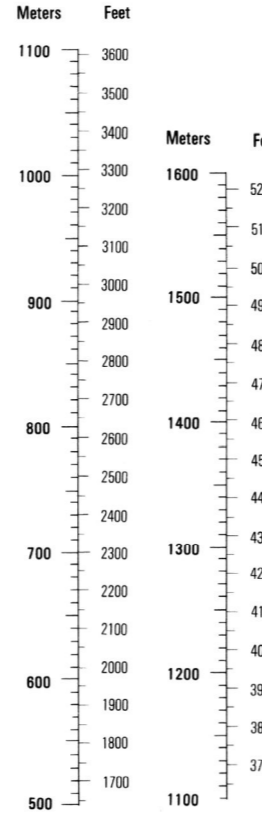


CAUTION: ALL TELEPHONE AND ELECTRIC SERVICE LINES ARE NOT SHOWN.
 A LINE ON THIS MAP IS CONSIDERED TO BE 2.5 METERS WIDE IN DEVELOPED AREAS ONLY THROUGH ROADS ARE CLASSIFIED.
 THERE MAY BE PRIVATE INHOLDINGS WITHIN THE BOUNDARIES OF THE NATIONAL OR STATE RESERVATIONS SHOWN ON THIS MAP.

LEGEND	
	Divided highway with median strip
	Primary, all weather, hard surface
	Secondary, all weather, hard surface
	Light duty, all weather, hard or improved surface
	Fair or dry weather, unimproved surface
	Trail
	Route markers: Interstate, Federal, State
	Bridge
	RAILROADS (Standard gauge 1.44m - 4'8 1/2")
	Single track
	Multiple track
	Nonoperating
	Railroad station: Location known; Location unknown
	Car line
	Railroad bridge
	TUNNEL: Highway, Railroad
	BOUNDARIES
	State, territory
	County, parish
	Civil township
	Incorporated city, village, town
	Reservation: National, State, Military
	Power transmission line
	Buildings
	Structures
	Church, School
	Power substation
	Windmill, Watermill
	Well, Tank
	Mine shaft
	Open pit mine or quarry
	Horizontal control
	Bench mark, monument
	Spot elevation, non-monumented
	Elevations in meters
	Leaves, rims, dikes
	Bluffs, cities
	Woodland
	Scattered trees, Scrub
	Vineyard, Orchard, plantation
	Intermittent lake, Dam, Earthen, Masonry
	Stream, Potential, Intermittent
	Marsh, Swamp
	Small falls, Large falls
	Small rapids, Large rapids

CONVERSION GRAPH

(1 meter = 3.28 feet)

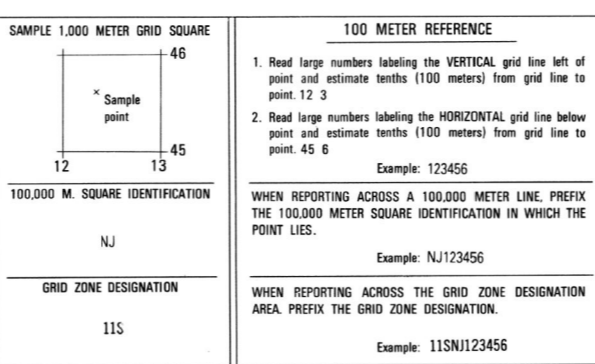


ELEVATIONS IN METERS

CONTOUR INTERVAL 20 METERS

SPHEROID CLARKE 1866
GRID 1,000-METER UTM ZONE 11 (BLACK NUMBERED LINES)
PROJECTION TRANSVERSE MERCATOR
VERTICAL DATUM NATIONAL GEODETIC VERTICAL DATUM OF 1929
HORIZONTAL DATUM 1983 NORTH AMERICAN DATUM
CONTROL BY USGS AND NOS-NOAA
PREPARED BY U. S. GEOLOGICAL SURVEY (EMATIC-3-86)
PUBLISHED BY U. S. GEOLOGICAL SURVEY (EMATIC-3-86)
 Reprinted by NSA 03-04

FOR SALE BY U. S. GEOLOGICAL SURVEY, DENVER, COLORADO 80225 OR RESTON, VIRGINIA 22092



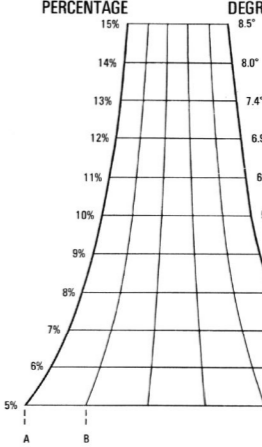
USERS SHOULD REFER CORRECTIONS, ADDITIONS, AND COMMENTS TO THE NGA OPERATIONAL HELP DESK: 1-800-455-6866; COMMERCIAL: 314-263-4864; DSN: 689-4864; OR WRITE TO: DIRECTOR, NATIONAL GEOSPATIAL-INTELLIGENCE AGENCY, ATTN: ES, MAIL STOP L-48, 4600 SANGAMORE ROAD, BETHESDA, MD 20818-5003.

BOUNDARIES **ADJOINING SHEETS**

San Bernardino County		
2654 II	2654 III	2654 II
2653 I	2653 IV	2653 I
2653 II	2653 III	2653 II

THIS MAP IS RED-LIGHT READABLE

SLOPE GUIDE



ELEVATION GUIDE

