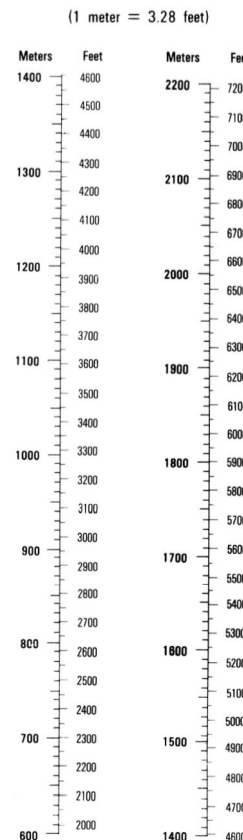


Prepared and published by the National Imagery and Mapping Agency

MAP INFORMATION AS OF 1983

**NOTES**  
 THE ONLY CHANGE TO THIS EDITION IS THE REGRIDDING FROM NAD27 TO WGS84/NAD83. NOTE THE NEW WGS84/NAD83 COORDINATE VALUES FOR THE CORNER TICS.  
 THE NORTH AMERICAN DATUM 1983 (NAD 83) AND THE WORLD GEODETIC SYSTEM 1984 DATUM (WGS 84) ARE EQUIVALENT FOR MAPPING, CHARTING AND NAVIGATION AT THIS SCALE.  
 CAUTION: ALL TELEPHONE AND ELECTRIC SERVICE LINES ARE NOT SHOWN. A LANE ON THIS MAP IS CONSIDERED TO BE 2.5 METERS WIDE. IN DEVELOPED AREAS ONLY THROUGH ROADS ARE CLASSIFIED.  
 THERE MAY BE PRIVATE INHOLDINGS WITHIN THE BOUNDARIES OF THE NATIONAL OR STATE RESERVATIONS SHOWN ON THIS MAP.

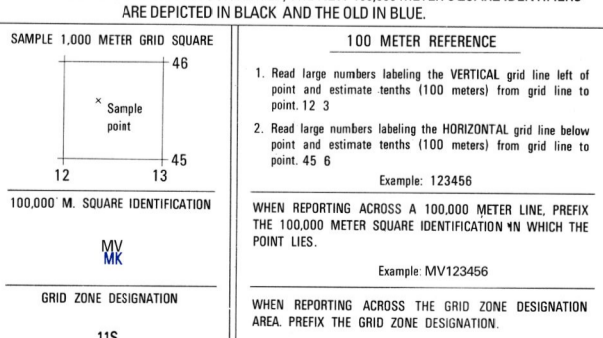
**CONVERSION GRAPH**  
 (1 meter = 3.28 feet)



**ELEVATIONS IN METERS**

**CONTOUR INTERVAL 20 METERS**

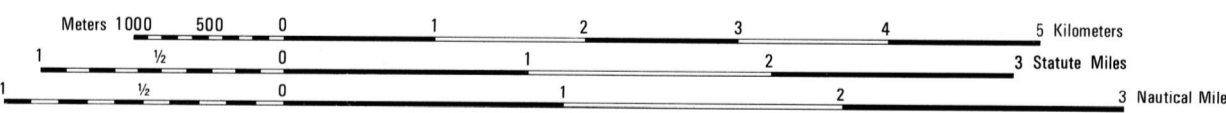
ELLIPSOID: GEODETIC REFERENCE SYSTEM 1980  
 GRID: 1000 METER UTM, ZONE 11  
 PROJECTION: TRANSVERSE MERCATOR  
 VERTICAL DATUM: SEA LEVEL DATUM OF 1929  
 HORIZONTAL DATUM: WGS84/NAD83  
 CONTROL BY: USGS AND NOS/NOAA AND USACE  
 PRINTED BY: NIMA, GS-000  
 COORDINATE CONVERSION NAD 83/VGS 84 TO NAD 27:  
 Grid: Add 79m E, Subtract 197m N,  
 Geographic: Subtract 3.2' Long, Add 1' Lat



NIMA IS UPDATING THE MILITARY GRID REFERENCE SYSTEM UNTIL ALL ADJACENT AND OVERLAPPING SHEETS ARE CONVERTED. THE NEW 100-METER SQUARE IDENTIFIERS ARE DEPICTED IN BLACK, AND THE OLD IN BLUE.

**LEGEND**

- ROADS: Divided highway with median strip, Primary, all weather, hard surface, Secondary, all weather, hard surface, Light duty, all weather, hard or improved surface, Fair or dry weather, unimproved surface, Trail
- RAILROADS: Standard gauge 1.44m - 4'8 1/2", Single track, Multiple track, Nonoperating, Railroad station: Location known, Location unknown
- RAILROAD BRIDGE: Tunnel, Highway, Railroad
- BOUNDARIES: National, with monument, State, territory, County, parish, Civil township, town, Incorporated city, village, town, Reservation: National, State, Military
- Power transmission line, Buildings, Structures, Church, School, Power substation, Windmill, Watermill, Well, Tank, Mine shaft, Open pit mine or quarry, Horizontal control station, Bench mark, monument, Bench mark, non-monumented, Spot elevations in meters, Levees, rills, dikes, Bluffs, cliffs, Woodland, Scattered trees, Scrub, Viewshed: Orchard, plantation, Intermittent lake: Dam, Earthen, Masonry, Stream: Perennial, Intermittent, Marsh, swamp, Small falls, Large falls, Small rapids, Large rapids

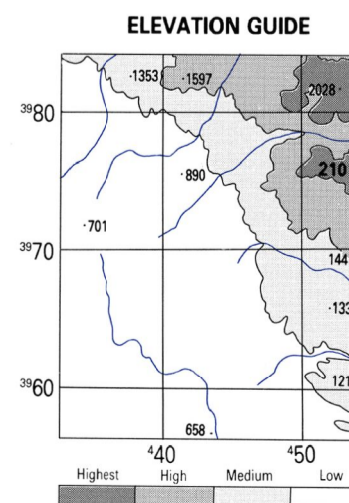
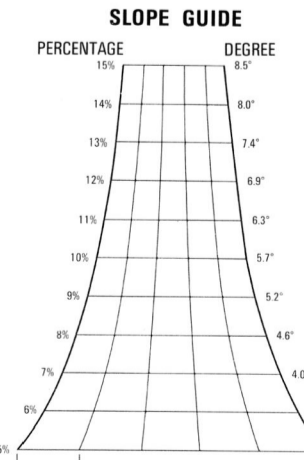


**BOUNDARIES**

Inyo County	San Bernardino County
-------------	-----------------------

**ADJOINING SHEETS**

2456 II	2458 II	2556 III
2456 IV	2458 IV	2556 IV
2456 VI	2458 VI	2556 VI



**THIS MAP IS RED-LIGHT READABLE**  
 FOR SALE BY U.S. GEOLOGICAL SURVEY, DENVER, COLORADO 80225  
 OR RESTON, VIRGINIA 22092

**WGS84/NAD83**  
 NSN 7643014044508  
 NIMA Ref No. V795X2455I