

Prepared by the U.S. Geological Survey for publication by the Defense Mapping Agency Hydrographic/Topographic Center, Washington, D.C. MAP INFORMATION AS OF 1988

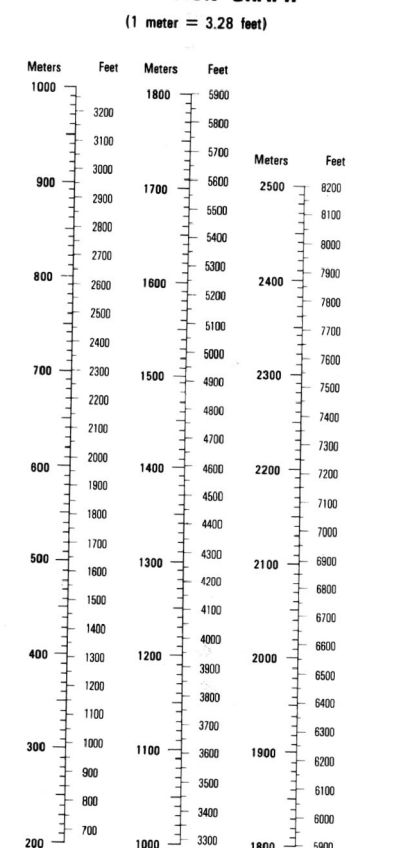


CAUTION: ALL TELEPHONE AND ELECTRIC SERVICE LINES ARE NOT SHOWN. A LANE ON THIS MAP IS CONSIDERED TO BE 2.5 METERS WIDE. IN DEVELOPED AREAS ONLY THROUGH ROADS ARE CLASSIFIED. THERE MAY BE PRIVATE HOLDINGS WITHIN THE BOUNDARIES OF THE NATIONAL OR STATE RESERVATIONS SHOWN ON THIS MAP.

LEGEND

- ROADS**
  - Divided highway with median strip
  - Primary, all weather, hard surface
  - Secondary, all weather, hard surface
  - Light duty, all weather, hard or improved surface
  - Fair or dry weather, unimproved surface
  - Trail
  - Road markers: Interstate, Federal, State
  - Bridge
  - RAILROADS (Standard gauge 1.44m, -4'8 1/2")
  - Single track
  - Multiple track
  - Nonoperating
  - Railroad station: Location known, Location unknown
  - Car line
  - Railroad bridge
  - Tunnel: Highway, Railroad
- BOUNDARIES**
  - National, with monument
  - State, territory
  - County, parish
  - Civil township, town
  - Incorporated city, village, town
  - Reservation: National, State, Military
- Power transmission line**
- Structures**
  - Church, School
  - Power substation
  - Windmill, Watermill
  - Well, Tank
  - Mine shaft
  - Open pit mine or quarry
  - Horizontal control station
  - Bench mark, monumented
  - Bench mark, non-monumented
  - Spot elevations in meters
  - Leaves, rim, dikes
  - Bluffs, cliffs
  - Woodland
  - Scattered trees: Scrub
  - Viewed: Orchard, plantation
  - Intermittent lake: Dam, Earthen, Masonry
  - Stream: Perennial, Intermittent
  - Marsh, swamp
  - Small falls, Large falls
  - Small rapids, Large rapids

CONVERSION GRAPH



ELEVATIONS IN METERS

CONTOUR INTERVAL 40 METERS

**ELLIPSOID** GEODETIC REFERENCE SYSTEM 1980  
**GRID** 1-000-METER UTM ZONE 11 (BLACK NUMBERED LINES)  
**PROJECTION** 5,000-METER STATE GRID TICKS, CALIFORNIA ZONE  
**VERTICAL DATUM** NATIONAL GEODETIC VERTICAL DATUM OF 1929  
**HORIZONTAL DATUM** NORTH AMERICAN DATUM OF 1983  
**CONTROL** BY U.S. GEOLOGICAL SURVEY  
**PREPARED BY** U.S. GEOLOGICAL SURVEY  
**PUBLISHED BY** DMAPSC 2-95

Reprinted by NIMA 04-01

FOR SALE BY U.S. GEOLOGICAL SURVEY, DENVER, COLORADO 80225  
 OR RESTON, VIRGINIA, 22092

**SAMPLE 1,000 METER GRID SQUARE**

**100 METER REFERENCE**

**100,000 M. SQUARE IDENTIFICATION**

**GRID ZONE DESIGNATION**

**GRID ZONE IDENTIFICATION**

**GRID ZONE DESIGNATION**

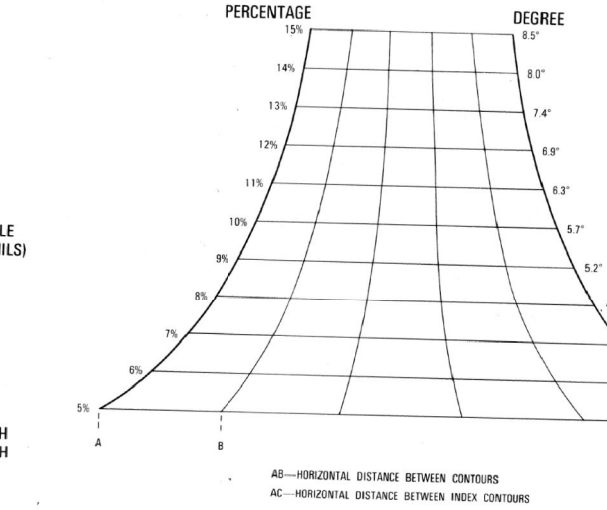
**GRID ZONE IDENTIFICATION**

USERS SHOULD REFER TO CORRECTIONS, ADDITIONS, AND COMMENTS TO THE NIMA OPERATIONAL HELP DESK: 1-800-452-8099; COMMERCIAL 314-263-4884; DSN 832-4884; OR WRITE TO: DIRECTOR, NATIONAL IMAGERY AND MAPPING AGENCY, ATTN: EN MAIL STOP L-80, 4600 SANGAMORE ROAD, BETHESDA, MD 20816-5003.

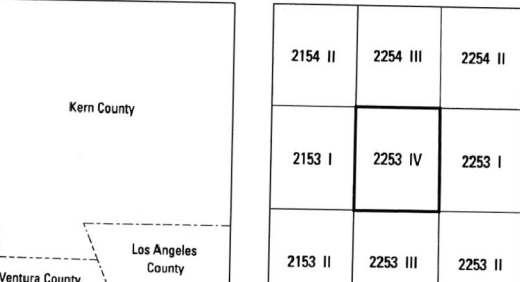
GRID CONVERGENCE 1'04" (19 MILS) FOR CENTER OF SHEET

THIS MAP IS RED-LIGHT READABLE

SLOPE GUIDE



BOUNDARIES

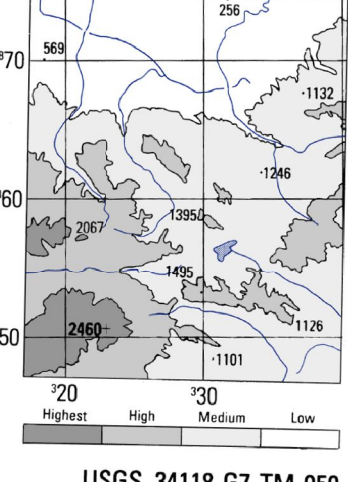


ADJOINING SHEETS

2154 II	2254 III	2354 II
2153 I	2253 IV	2353 I
2153 II	2253 III	2353 II

Sheet 2253 IV falls within N 14 1987, 128,000

ELEVATION GUIDE



USGS 34118-G7-TM-050  
NSN 7643014038537  
NIMA Ref No. V795X22534  
ED NO 001