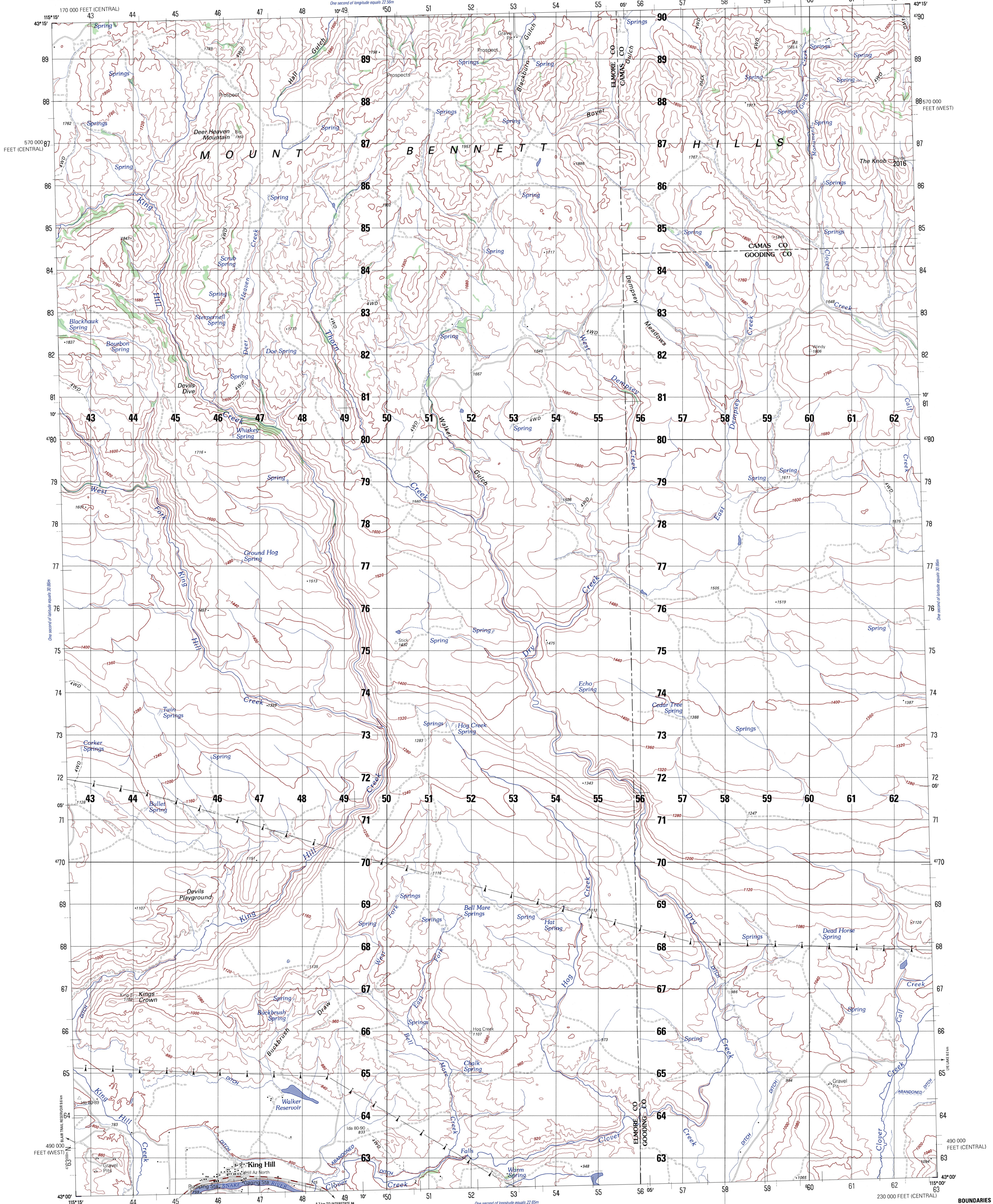


KING HILL

EDITION 1-DMA SERIES V793 SHEET 2970 II

IDAHO 1:50,000

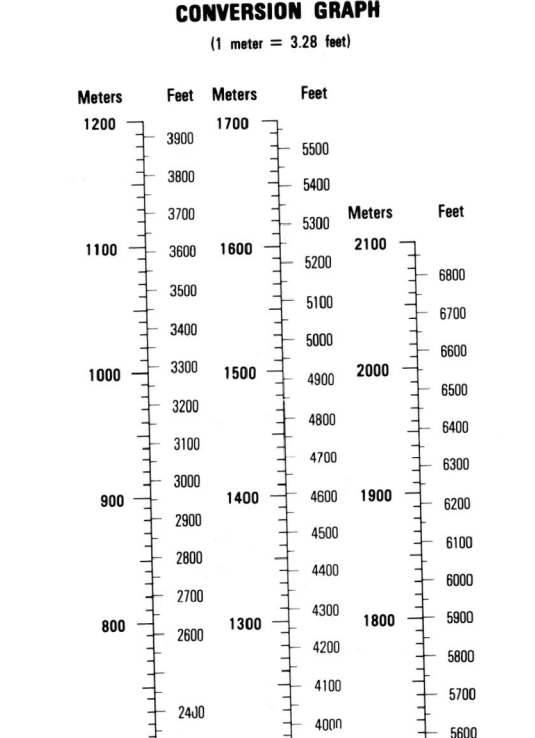


Prepared by the U.S. Geological Survey for publication by the Defense Mapping Agency Hydrographic/Topographic Center, Washington, D.C.
 MAP INFORMATION AS OF 1984

CAUTION: ALL TELEPHONE AND ELECTRIC SERVICE LINES ARE NOT SHOWN. A LANE ON THIS MAP IS CONSIDERED TO BE 2.5 METERS WIDE. IN DEVELOPED AREAS ONLY THROUGH ROADS ARE CLASSIFIED. THERE MAY BE PRIVATE HOLDINGS WITHIN THE BOUNDARIES OF THE NATIONAL OR STATE RESERVATIONS SHOWN ON THIS MAP.

LEGEND

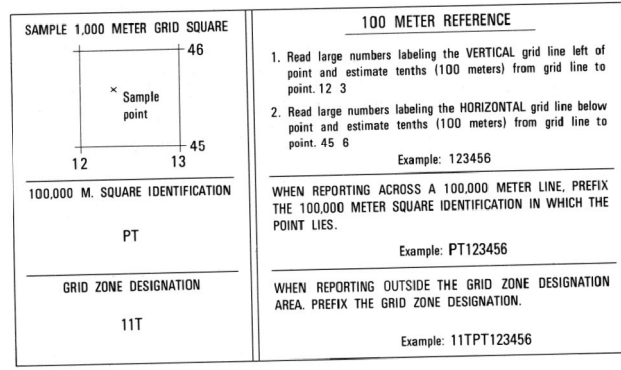
- ROADS**
- Divided highway with median strip
- Primary, all weather, hard surface
- Secondary, all weather, hard surface
- Light duty, all weather, hard or improved surface
- Fair or dry weather, unimproved surface
- Trail
- Route markers: Interstate, Federal, State
- Car line
- Railroad bridge
- RAILROADS** (Standard gauge 1.44m - 4'8 1/2")
- Single track
- Multiple track
- Nonoperating
- Railroad station: Location known; Location unknown
- Car line
- Woodland bridge
- Tunnel: Highway, Railroad
- BOUNDARIES**
- National, with monument
- State, territory
- County, parish
- Civil township, town
- Incorporated city, village, town
- Reservation: National, State, Military
- Power transmission line
- Buildings
- Church: School
- Power substation
- Windmill; Watermill
- Well; Tank
- Mine shaft
- Open pit mine or quarry
- Horizontal control station
- Bench mark, monument
- Bench mark, non-monument
- Spot elevations in meters
- Leaves, stims, dikes
- Bluffs, cliffs
- Woodland
- Scattered trees: Scrub
- Vineyard; Orchard; plantation
- Intermittent lake: Dam; Earth; Masonry
- Marsh; swamp
- Stream: Perennial; Intermittent
- Mark: towers
- Small hills, large hills
- Small rapids; Large rapids



ELEVATIONS IN METERS
 CONTOUR INTERVAL 40 METERS

ELIPSOID: CLARKE 1866
 GRID: 1,000 METER UTM ZONE 11 (BLACK NUMBERED LINES)
 PROJECTION: TRANSVERSE MERCATOR
 VERTICAL DATUM: NATIONAL GEODETIC VERTICAL DATUM OF 1929
 HORIZONTAL DATUM: 1927 NORTH AMERICAN DATUM
 CONTROL: USGS AND NOS/NOAA
 PREPARED BY: U.S. GEOLOGICAL SURVEY

FOR SALE BY U.S. GEOLOGICAL SURVEY, DENVER, COLORADO 80225
 OR RESTON, VIRGINIA 22092



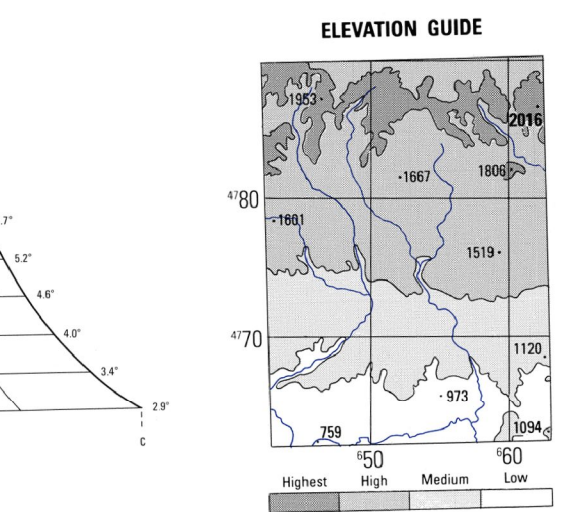
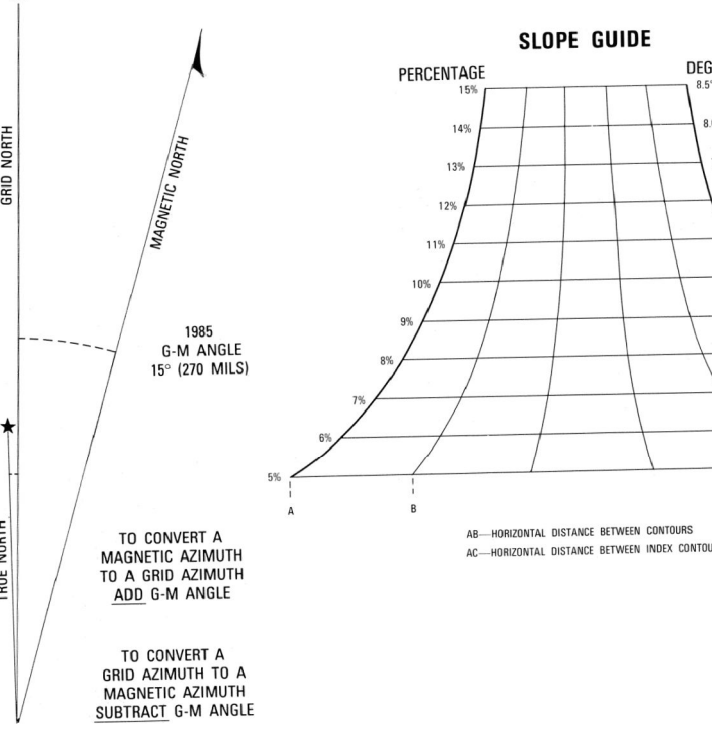
USERS SHOULD REFER TO CORRECTIONS, ADDITIONS, AND COMMENTS TO THE NGA OPERATIONAL HELP DESK: 1-800-455-6889; COMMERCIAL: 314-263-4884; DSN 693-4884 OR WRITE TO: DIRECTOR, NATIONAL GEOSPATIAL INTELLIGENCE AGENCY, ATTN: ES MAIL STOP 1-8, 4800 SAWHARE ROAD, BETHESDA, MD 20816-5003.

BOUNDARIES

Elmore County	Camas County
---------------	--------------

ADJOINING SHEETS

2970 IV	2970 I	3070 IV
2970 III	2970 II	3070 III
2969 IV	2969 I	3069 IV



THIS MAP IS RED-LIGHT READABLE
 USGS 43115-A1-TM-050

NSN 7643014020936
 NGA Ref No. V793X29702