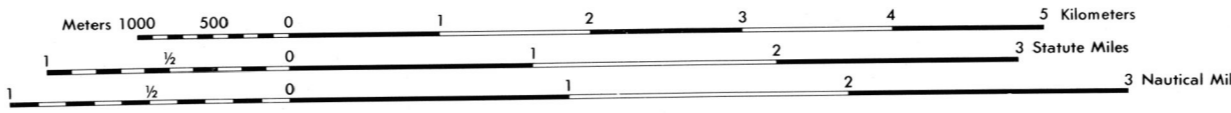


Prepared and published by the Defense Mapping Agency  
Topographic Center, Washington, D. C.

LEGEND

- ROAD DATA 1973**  
**OTHER INFORMATION 1974**
- ON THIS MAP A LINE IS GENERALLY CONSIDERED AS BEING A MINIMUM OF 2.5 METERS (8 FEET) IN DEVELOPED AREAS. ONLY THROUGH ROADS ARE CLASSIFIED. TINT INDICATES BUILT-UP AREAS IN WHICH ONLY LANDMARK BUILDINGS ARE SHOWN.
- ROADS**
- Divided highway with median strip
  - Primary all weather, hard surface, two or more lanes wide
  - Secondary all weather, hard surface, two or more lanes wide
  - Light duty, all weather, hard or improved surface
  - Fair or dry weather, unpaved surface
  - Tail
  - Route markers: Interstate, Federal, State
- RAILROADS** (Standard gauge: 4'8 1/2" - 1.44 m.)
- Single track
  - Multiple track, non-operating
  - Railroad station. Position known. Position unknown.
  - Car line
- BOUNDARIES**
- National
  - State, territory
  - County, parish, municipio
  - Civil township, precinct, town, barrio
  - Unincorporated city, village, town, hamlet
  - Reservation National, state, military
  - Power transmission line
- Buildings or structures**
- Church, school
  - Watermill, wind pump
  - Windmill, wind pump
  - Mine, vertical shaft
  - Mine, horizontal shaft
  - Open pit mine or quarry, inactive
  - Open pit mine or quarry, active
  - Horizontal control station
  - Bench mark, monumented
  - Bench mark, non-monumented
  - Spot elevations in meters: Checked, unchecked
  - Woodland, scrub
  - Vineyard, orchard
  - Intermittent lake
  - Intermittent stream, dam
  - Marsh or swamp
  - Rapids, falls
  - Large rapids, large falls



ELEVATIONS IN METERS

CONTOUR INTERVAL 40 METERS

SPHEROID: CLARKE 1866  
GRID PROJECTION: 1,000 METER UTM ZONE 11  
TRANSVERSE MERCATOR  
VERTICAL DATUM: SEA LEVEL DATUM 1929  
HORIZONTAL DATUM: 1929 NORTH AMERICAN  
CONTROL BY: USGS AND USCGS

Reprinted by NGA 09-06

**100 METER REFERENCE**

1. Read large numbers labeling the VERTICAL grid line left of point and estimate tenths (100 meters) from grid line to point. Example: 1234.5

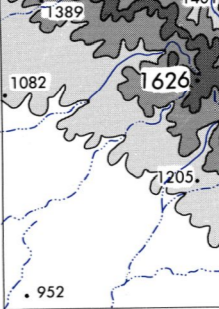
2. Read large numbers labeling the HORIZONTAL grid line below point and estimate tenths (100 meters) from grid line to point. Example: 45.6

Example: 12345.6

WHEN REPORTING ACROSS A 100,000 METER GRID, PREFER THE 100,000 METER SQUARE IDENTIFICATION, IN WHICH THE POINT LIES. Example: NU123456

WHEN REPORTING OUTSIDE THE GRID ZONE DESIGNATION AREA, PREFER THE GRID ZONE DESIGNATION. Example: 11TNU123456

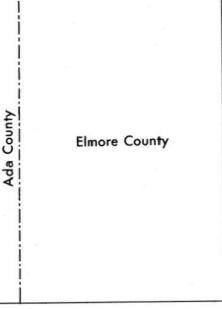
ELEVATION GUIDE



ADJOINING SHEETS

2771 II	2871 III	2871 II
2770 I	2870 IV	2870 I
2770 II	2870 III	2870 II

BOUNDARIES



METRIC CONVERSION OF CONTOURS AND ELEVATIONS 1979

THIS MAP IS RED-LIGHT READABLE

USERS SHOULD REFER TO THE NSA OPERATIONAL HELP DESK: 1-800-455-0888, COMMERCIAL: 314-326-4884, OR WRITE TO DIRECTOR, NATIONAL GEOSPATIAL INTELLIGENCE AGENCY, ATTN: ES, MAIL STOP L-88, 4800 SANGAMORE ROAD, BETHESDA, MD 20816-5003.

FOR SALE BY U.S. GEOLOGICAL SURVEY, DENVER, COLORADO 80225 OR RESTON, VIRGINIA 22092

NSN 764301404436  
NGA Ref No V793X28704