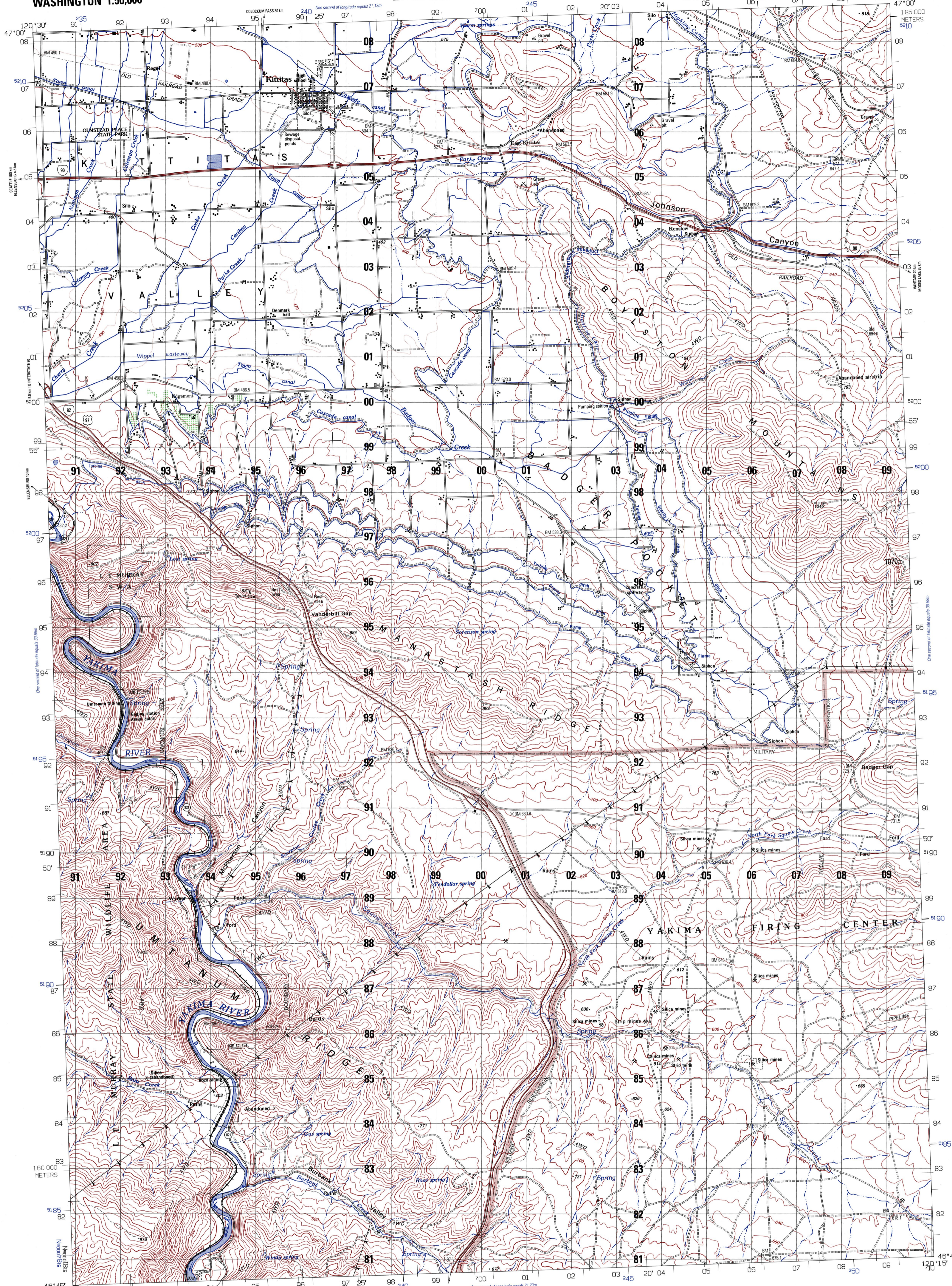


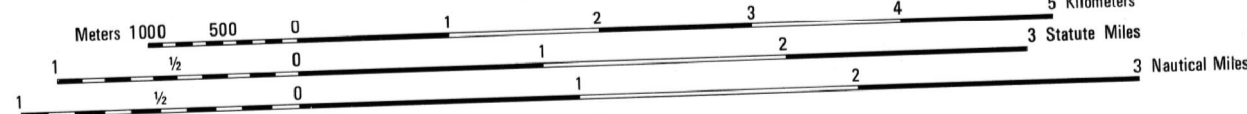
WASHINGTON 1:50,000

BADGER POCKET



Prepared by the U.S. Geological Survey for publication by the Defense Mapping Agency

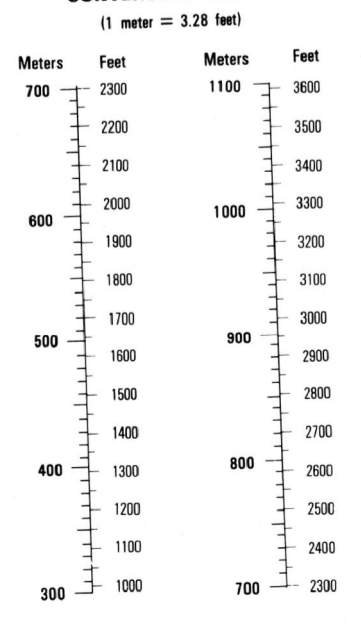
MAP INFORMATION AS OF 1995



ELEVATIONS IN METERS
CONTOUR INTERVAL 20 METERS
 SUPPLEMENTARY CONTOURS IN METERS

ELLIPSOID: WORLD GEODETIC SYSTEM 1984
 GEODETIC REFERENCE SYSTEM 1980
 GRID: 1,000-METER UTM ZONE 18 (BLACK NUMBERED LINES)
 1,000-METER UTM ZONE 19 (BLUE NUMBERED TICKS)
 5,000-METER STATE GRID TICKS, WASHINGTON (SOUTH ZONE)
 TRANSVERSE MERCATOR
 PROJECTION: NATIONAL GEODETIC VERTICAL DATUM OF 1929
 VERTICAL DATUM: WORLD GEODETIC SYSTEM 1984
 HORIZONTAL DATUM: U.S. GEOLOGICAL SURVEY
 U.S.G.S. NOS/DA AND USBR
 CONTROL BY: U.S. GEOLOGICAL SURVEY, DENVER, COLORADO 80225
 PRINTED BY: U.S. GEOLOGICAL SURVEY, DENVER, COLORADO 80225
 FOR SALE BY U.S. GEOLOGICAL SURVEY, DENVER, COLORADO 80225
 OR RESTON, VIRGINIA 22092
 Reprinted by NIMA 5-92

CONVERSION GRAPH

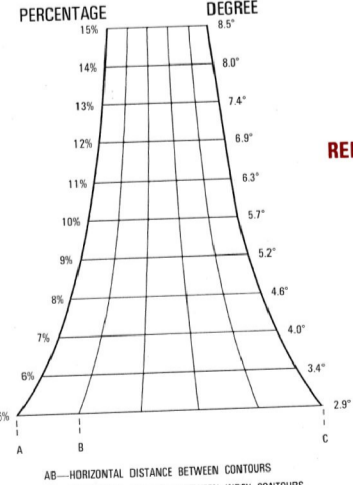


LEGEND

CAUTION: ALL TELEPHONE AND ELECTRIC SERVICE LINES ARE NOT SHOWN.
 A LANE ON THIS MAP IS CONSIDERED TO BE 25 METERS WIDE.
 IN DEVELOPED AREAS ONLY THROUGH ROADS ARE CLASSIFIED.
 THERE MAY BE PRIVATE HOLDINGS WITHIN THE BOUNDARIES OF
 THE NATIONAL OR STATE RESERVATIONS SHOWN ON THIS MAP.

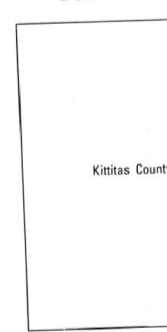
- ROADS**
- Divided highway with median strip
- Primary, all weather, hard surface
- Secondary, all weather, hard surface
- Light duty, all weather, hard or improved surface
- Fair or dry weather, unimproved surface
- Trail
- Route markers: Interstate, Federal, State
- Bridge
- RAILROADS (Standard gauge 1.44m - 4'8 1/2")
- Single track
- Multiple track
- Nonoperating
- Railroad station: Location known, Location unknown
- Car line
- Railroad bridge
- Tunnel: Highway, Railroad
- BOUNDARIES**
- National, with monument
- State, territory
- County, parish
- Civil townships, town
- Incorporated city, village, town
- Reservation: National, State, Military
- Power transmission line
- Buildings
- Structures
- Church, School
- Power substation
- Windmill, Watermill
- Well, Tank
- Mine shaft
- Open pit mine or quarry
- Horizontal control station
- BM x 219.2
- Bench mark, monument
- Bench mark, non-monumented
- Spot elevations in meters
- Lowers, dikes, ditches
- Shoals, ciffs
- Woodland
- Scattered trees, Scrub
- Wooded: Orchard, plantation
- Intensified lake, Dam, Earth, Masonry
- Stream: Perennial, Intermittent
- Marsh, swamp
- Small falls, Large falls
- Small rapids, Large rapids

SLOPE GUIDE



THIS MAP IS RED-LIGHT READABLE

BOUNDARIES



ADJOINING SHEETS

1978 II	1978 III	1978 IV
1977 I	1977 II	1977 III
1977 IV	1977 I	1977 II

ELEVATION GUIDE

