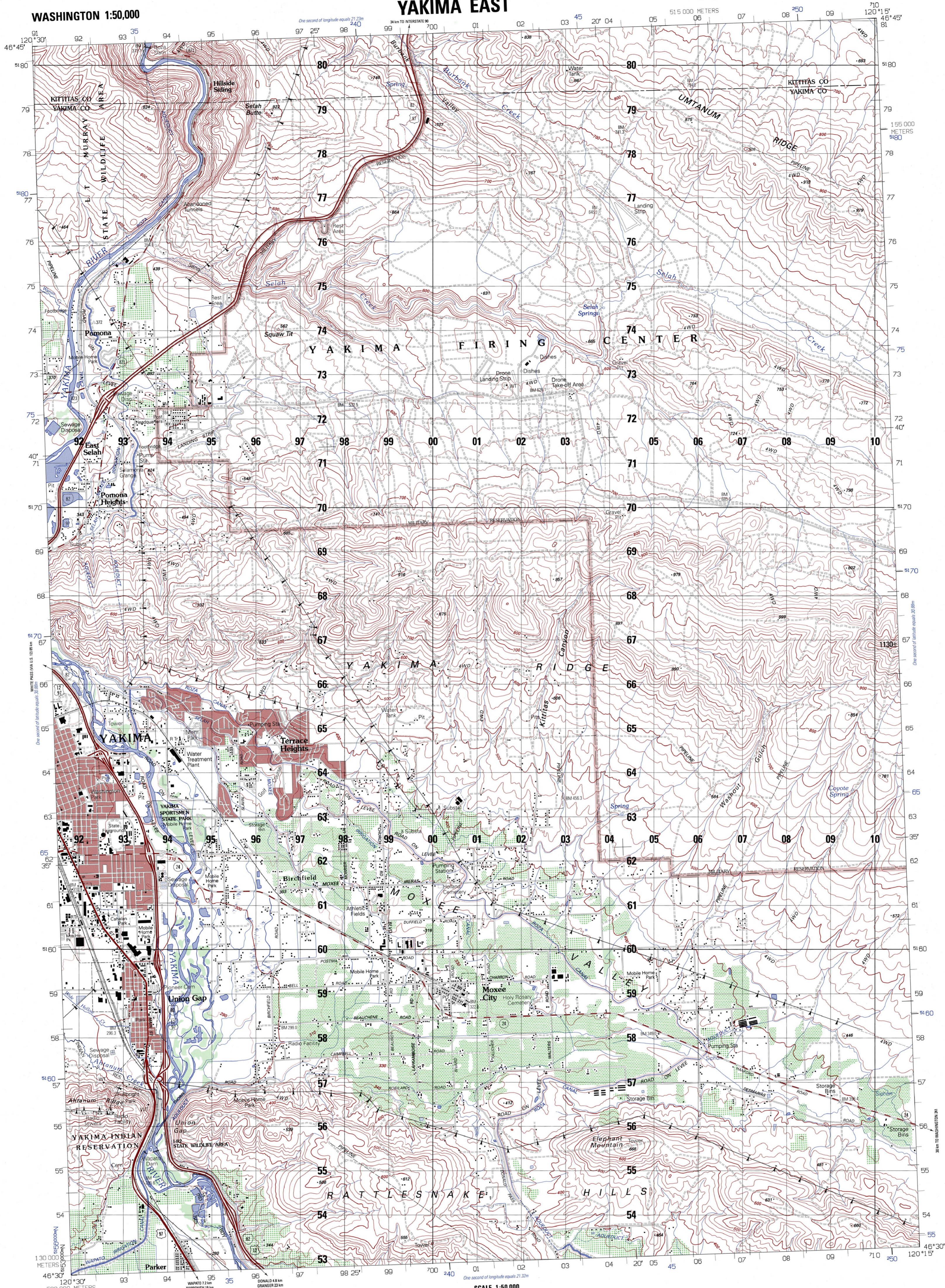


WASHINGTON 1:50,000

YAKIMA EAST



Prepared by the U.S. Geological Survey for publication by the National Imagery and Mapping Agency

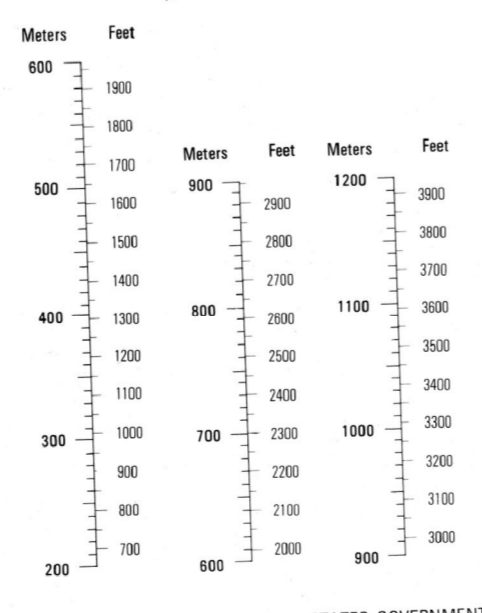
MAP INFORMATION AS OF 1995



CAUTION: ALL TELEPHONE AND ELECTRIC SERVICE LINES ARE NOT SHOWN. A LANE ON THIS MAP IS CONSIDERED TO BE 2.5 METERS WIDE. IN DEVELOPED AREAS ONLY THROUGH ROADS ARE CLASSIFIED. THERE MAY BE PRIVATE INHOLDINGS WITHIN THE BOUNDARIES OF THE NATIONAL OR STATE RESERVATIONS SHOWN ON THIS MAP.

Legend table with symbols for roads, railroads, power lines, and other features.

CONVERSION GRAPH



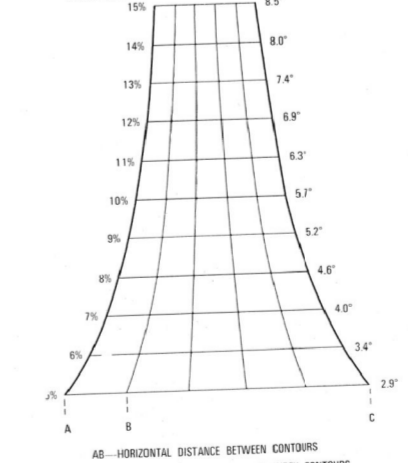
ELEVATIONS IN METERS

CONTOUR INTERVAL 20 METERS SUPPLEMENTARY CONTOURS 10 METERS

ELLIPSOID: WORLD GEODETIC SYSTEM 1984 GEODETIC REFERENCE SYSTEM 1985 GRID: 1,000-METER UTM ZONE 18 (BLACK NUMBERED LINES) 1,000-METER UTM ZONE 11 (BLUE NUMBERED LINES) 5,000-METER STATE GRID TICS (WASHINGTON SOUTH ZONE) PROJECTION: TRANSVERSE MERCATOR VERTICAL DATUM: NATIONAL GEODETIC VERTICAL DATUM OF 1929 HORIZONTAL DATUM: NORTH AMERICAN DATUM 1983 WORLD GEODETIC SYSTEM 1984 U.S. GEOLOGICAL SURVEY U.S. GEOLOGICAL SURVEY NIMA 1:50,000

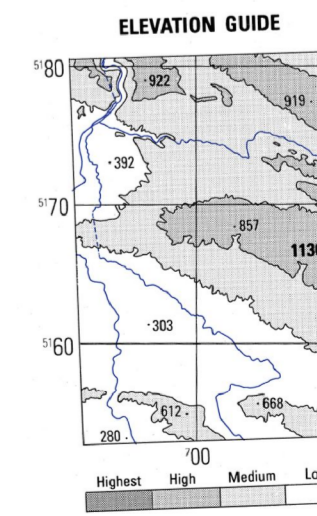
FOR SALE BY U.S. GEOLOGICAL SURVEY, DENVER, COLORADO 80225. SAMPLE 1,000 METER GRID SQUARE. 100 METER REFERENCE. 1. Read large numbers labeling the VERTICAL grid line left of point 12.3. 2. Read large numbers labeling the HORIZONTAL grid line below point 45.6. Example: 123456. WHEN REPORTING ACROSS A 100,000 METER LINE, PREFIX THE 100,000 METER SQUARE IDENTIFICATION IN WHICH THE POINT LIES. Example: G5123456. WHEN REPORTING ACROSS THE GRID ZONE DESIGNATION AREA, PREFIX THE GRID ZONE DESIGNATION. Example: 10TGS123456.

SLOPE GUIDE



THIS MAP IS RED-LIGHT READABLE

BOUNDARIES and ADJOINING SHEETS table.



NSN 7643014044415 NIMA Ref No V791X19773 ED NO 005