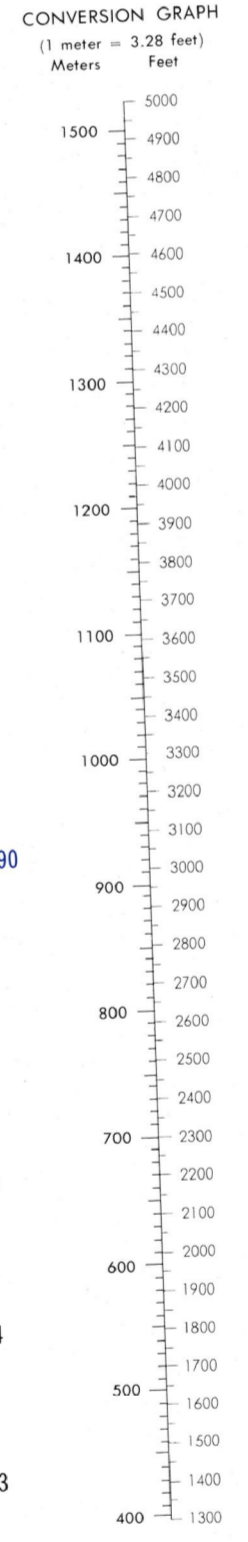
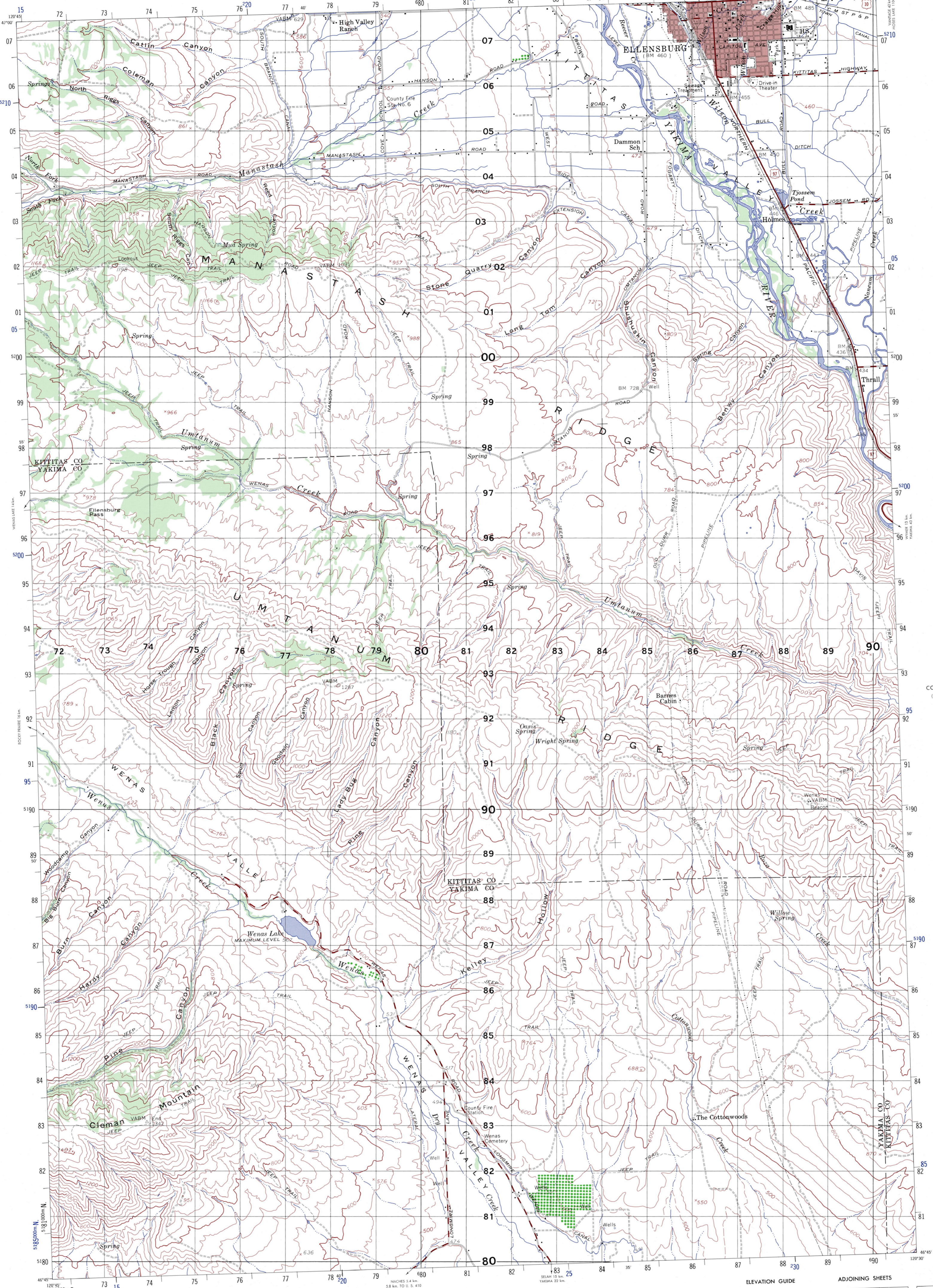


ELLENSBURG

WASHINGTON 1:50,000



Prepared under the direction of the Department of Defense and published by the U. S. Army Topographic Command, Washington, D. C.

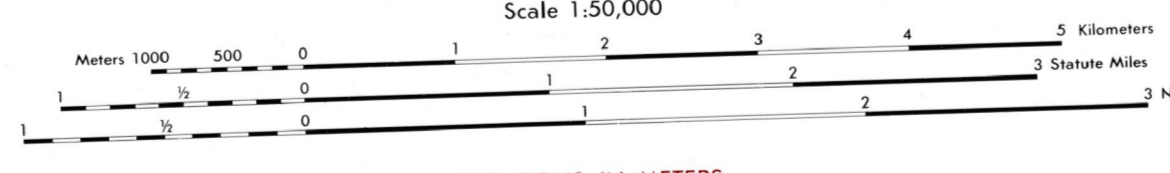
LEGEND

Tint indicates built-up areas in which only landmark buildings are shown

MAP INFORMATION AS OF 1958

In developed areas, only through roads are classified

Hard surface, heavy duty road, four or more lanes wide	Improved light duty road, street
Hard surface, heavy duty road, two lanes wide, three lanes wide	Unimproved dirt road
Hard surface, medium duty road, two lanes wide, three lanes wide	Trail
Buildings	Route markers: Interstate, Federal, State, Municipal, Open pt., Horizontal shaft, Vertical shaft, Prospect
Barns, sheds, greenhouses, stadiums, etc.	Bench mark, non-monumented
RAILROADS	Spike track, Multiple track
Standard gauge	Spike track, Multiple track
Narrow gauge	Light, lighthouse, Windmill, windpump
In street	Woods or brushwood
Carline	Vineyard, Orchard
BOUNDARIES	Interruption lake
National	Interruption stream, Dam
State (with monument)	Marsh or swamp
County	Coastline
County subdivision	Other reservation
Corporate limits	
Military reservation	
Other reservation	



ELEVATIONS IN METERS

CONTOUR INTERVAL 40 METERS
SUPPLEMENTARY CONTOURS 20 METERS
REPRINTED BY NIMA 10/01

SPHEROID: CLARKE 1866
GRID: 1,000 METER UTM, ZONE 10 (BLACK NUMBERED TICKS)
PROJECTION: UTM
VERTICAL DATUM: SEA LEVEL DATUM 1929
HORIZONTAL DATUM: 1927 NORTH AMERICAN DATUM
CONTROL: U.S. AND U.S.C.G.S.
CONTROL BY: U.S. ARMY TOPOGRAPHIC COMMAND (101)

FOR SALE BY U. S. GEOLOGICAL SURVEY, DENVER, COLORADO 80225
OR RESTON, VIRGINIA 22092

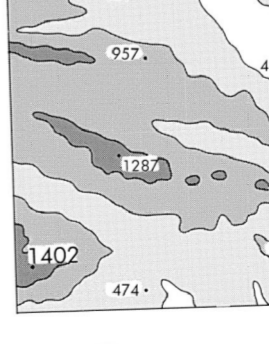
100 METER REFERENCE

1. Read large numbers labeling the VERTICAL grid line left of point and estimate tenths (100 meters) from gridline to point.
2. Read large numbers labeling the HORIZONTAL gridline below point and estimate tenths (100 meters) from grid line to point.
Example: 1234.56

WHEN REPORTING ACROSS A 100,000 METER LINE, PREFIX THE 100,000 METER SQUARE IDENTIFICATION, IN WHICH THE POINT LIES.
Example: FG123456

WHEN REPORTING OUTSIDE THE GRID ZONE DESIGNATION AREA, PREFIX THE GRID ZONE DESIGNATION.
Example: 10T FG123456

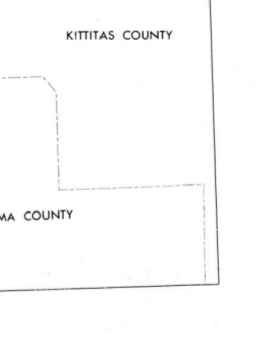
ELEVATION GUIDE



ADJOINING SHEETS

1878 III	1878 II	1878 III
1877 IV	1877 I	1877 IV
1877 III	1877 II	1877 III

BOUNDARIES



USERS SHOULD REFER CORRECTIONS, ADDITIONS, AND COMMENTS TO THE NSA OPERATIONAL HELP DESK: 1-800-456-9886 COMMERCIAL 314-263-4864, OR WRITE TO: DIRECTOR, NATIONAL GEOSPATIAL INTELLIGENCE AGENCY, ATTN: ES, MAIL STOP-LB, 4600 SANGAMORE ROAD, BETHESDA, MD 20815-9004

METRIC CONVERSION OF CONTOURS AND ELEVATIONS 1979
THIS MAP IS RED-LIGHT READABLE

NSN 764301 4044408
NCA Ref No V791X18771

ED 0002