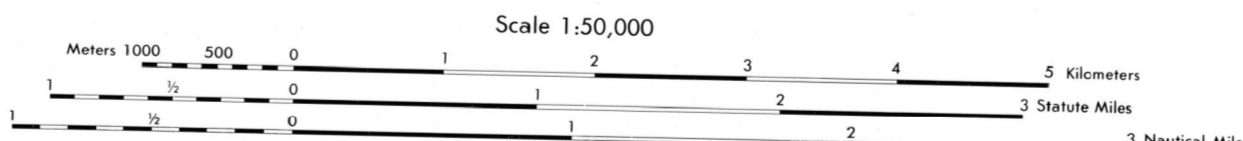


Prepared and published by the Defense Mapping Agency
Topographic Center, Washington, D. C.



ELEVATIONS IN METERS

CONTOUR INTERVAL 10 METERS

USERS SHOULD REFER CORRECTIONS, ADDITIONS, AND COMMENTS TO THE NSA OPERATIONAL HELP DESK:
1-800-455-0088; COMMERCIAL 314-263-4864; DSN 693-4864; OR WRITE TO: DIRECTOR, NATIONAL GEOSPATIAL
INTELLIGENCE AGENCY, ATTN: E.S. MAIL STOP-88, 4600 SANGAMORE ROAD, BETHESDA, MD 20816-5003.

SPHEROID: CLARKE 1866
GRID PROJECTION: 1 000 METER UTM ZONE 15 (BLACK NUMBERED LINES)
TRANSVERSE MERCATOR
VERTICAL DATUM: MEAN SEA LEVEL
HORIZONTAL DATUM: NORTH AMERICAN 1927
CONTROL: U. S. COAST AND GEODETIC SURVEY AND ARMY MAP SERVICE

Reprinted by NIMA 2-02

FOR SALE BY U.S. GEOLOGICAL SURVEY, DENVER, COLORADO 80225
OR RESTON, VIRGINIA 22092

100 METER REFERENCE

1. Read large numbers labeling the VERTICAL grid from gridline to point.

2. Read large numbers labeling the HORIZONTAL gridline below point and estimate tenth (100 meters) from grid line to point.

Example: 123456

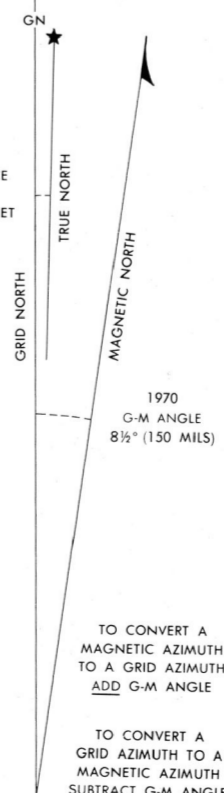
WHEN REPORTING ACROSS A 100,000 METER LINE, PREFIX THE 100,000 METER SQUARE IDENTIFICATION, IN WHICH THE POINT LIES.

Example: UK123456

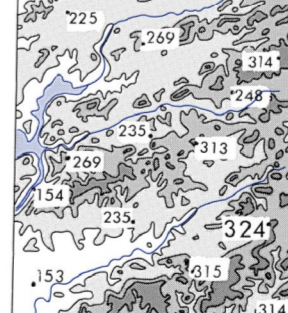
WHEN REPORTING OUTSIDE THE GRID ZONE DESIGNATION AREA, PREFIX THE GRID ZONE DESIGNATION.

Example: 155UK123456

GRID CONVERGENCE
1°15' (22 METERS)
FOR CENTER OF SHEET



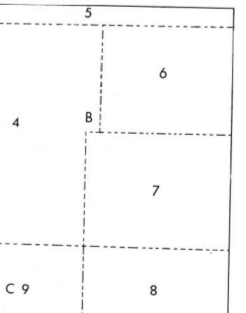
ELEVATION GUIDE



ADJOINING SHEETS

| | | |
|----------|---------|----------|
| 6950 III | 6950 II | 7050 III |
| 6955 IV | 6955 I | 7055 IV |
| 6955 III | 6955 II | 7055 III |

BOUNDARIES



METRIC CONVERSION OF CONTOURS AND ELEVATIONS 1979

THIS MAP IS RED-LIGHT READABLE

NSN 7643014044329
NGA Ref No: V783X69551

ED NO 003