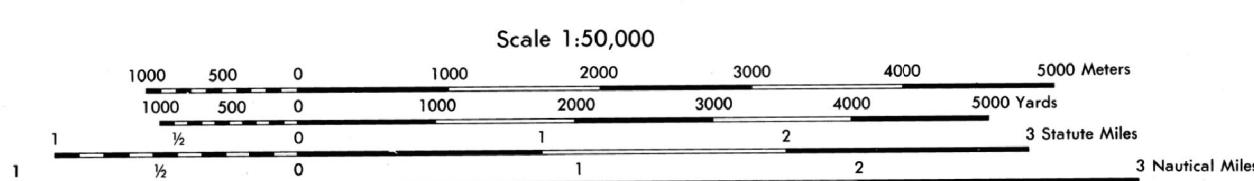


Prepared and published by the Defense Mapping Agency
Topographic Center, Washington, D. C.

MAP INFORMATION AS OF 1975
ON THIS MAP A LANE IS GENERALLY CONSIDERED AS BEING A MINIMUM OF 2.5 METERS (8 FEET) IN WIDTH.

- ROADS**
- Divided highway with median strip
 - Primary all-weather, hard surface
 - Secondary all-weather, hard surface
 - Light duty all-weather, hard or improved surface
 - Fair or dry-weather, unimproved surface
 - Trail
- BRIDGES**
- Overpass, Underpass
 - Highway bridge, Footbridge
 - Railroad bridge
- RAILROADS**
- Standard-gauge (4'8 1/2" or 1463 mm)
 - Narrow-gauge
- BOUNDARIES**
- International
 - State
 - County
 - Civil township, Town
 - Reservations: Military, State or Forest
- OTHER FEATURES**
- Buildings or structures
 - Church, School
 - Tank, Windmill, windpump, Water mill
 - Power transmission line, Well
 - Benchmarks: Monumented, Non-monumented
 - Horizontal control point
 - Spot elevations in meters: Checked, Unchecked
 - Located object: Hilltop
 - Mass: Horizontal shaft, Vertical shaft, Quarry
 - Levee, Cut, Fill
 - Sand, Swamp
 - Woodland, Scrub
 - Scattered trees, Orchard
 - Dry lake
 - Intermittent stream
 - Dams
 - Interment lake
 - Spring, Well
 - Falls, Large Small



ELEVATIONS IN METERS
CONTOUR INTERVAL TO METERS
SUPPLEMENTARY CONTOURS 5 METERS

SPHEROID: CLARKE 1866
GRID: 1,000 METER UTM ZONE 14
PROJECTION: TRANSVERSE MERCATOR
VERTICAL DATUM: NATIONAL GEODETIC DATUM OF 1929
CONTROL: 1973 NORTH AMERICAN DATUM
NAD83, NAD83, USGS, CE AND OKLAHOMA GEODETIC SURVEY

FOR SALE BY U. S. GEOLOGICAL SURVEY, DENVER, COLORADO 80225
OR RESTON, VIRGINIA 22092

100 METER REFERENCE

1. Read large numbers labeling the VERTICAL grid from gridline to point. 12 3

2. Read large numbers labeling the HORIZONTAL grid from below-point and estimate meters (100 meters) from grid line to point. 42 6

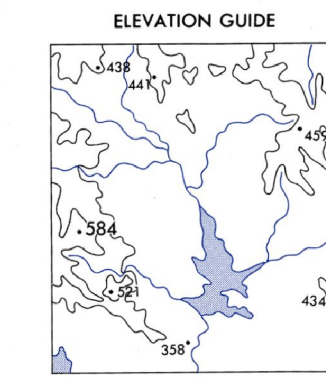
Example: 123456

WHEN REPORTING ACROSS A 100,000 METER LINE, PREPARE THE 100,000 METER SQUARE IDENTIFICATION, IN WHICH THE POINT LIES.

Example: NP123456

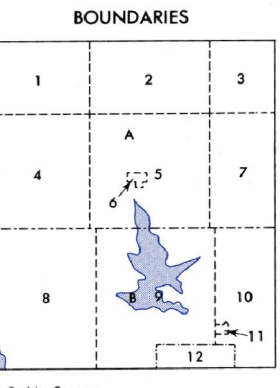
WHEN REPORTING OUTSIDE THE GRID ZONE DESIGNATION AREA, PREPARE THE GRID ZONE DESIGNATION.

Example: 14SNP123456



ADJOINING SHEETS

6354 III	6354 II	6354 I
6353 III	6353 II	6353 I
6352 III	6352 II	6352 I



USERS SHOULD REFER CORRECTIONS, ADDITIONS, AND COMMENTS TO THE NSA OPERATIONAL HELP DESK: 1-800-469-0899; COMMERCIAL: 314-263-4984; DOW 198-4884 OR WRITE TO: DIRECTOR, NATIONAL GEOSPATIAL INTELLIGENCE AGENCY, ATTN: ES MAIL STOP L-48, 4800 SANGAMORE ROAD, BETHESDA, MD 20818-5003.

THIS MAP IS RED-LIGHT READABLE

NSN 7643014044323
NGA Ref No V783X63534