

ELEVATIONS IN METERS
CONTOUR INTERVAL 10 METERS
VERTICAL DATUM: SEA LEVEL DATUM OF 1929

TRANSVERSE MERCATOR PROJECTION
HORIZONTAL DATUM: 1927 NORTH AMERICAN DATUM

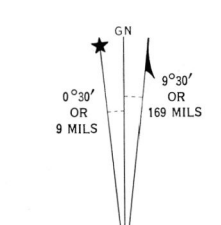
BLACK NUMBERED LINES INDICATE THE 1,000 METER UNIVERSAL TRANSVERSE MERCATOR GRID. ZONE 14

THE LAST THREE DIGITS OF THE GRID NUMBERS ARE OMITTED

USERS SHOULD REFER CORRECTIONS, ADDITIONS, AND COMMENTS TO THE NGA OPERATIONAL HELP DESK: 1-800-455-0899; COMMERCIAL 314-263-4884; DSN 893-4884; OR WRITE TO: DIRECTOR, NATIONAL GEOSPATIAL INTELLIGENCE AGENCY, ATTN: ES, MAIL STOP 18-460, SANGAMORE ROAD, BETHESDA, MD 20816-5002.

GRID ZONE DESIGNATION: 14S
TO GIVE A STANDARD REFERENCE ON THIS SHEET TO NEAREST 100 METERS

METRIC CONVERSION OF CONTOURS AND ELEVATIONS 1979
THIS MAP IS RED-LIGHT READABLE

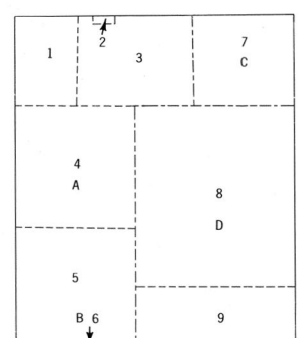


APPROXIMATE MEAN DECLINATION 1995
FOR CENTER OF SHEET
ANNUAL MAGNETIC CHANGE 2' WESTERLY

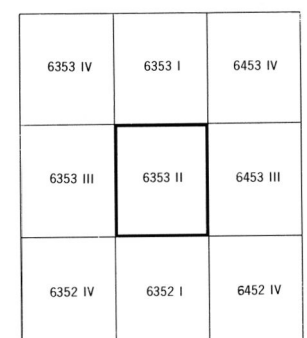
Prepared by the Army Map Service (LD), Corps of Engineers, U. S. Army, Washington, D. C. Compiled in 1958 from Oklahoma, 1:25,000, AMS, Sheets 6353 II NE, SE, SW and NW, field checked 1956. Horizontal and vertical control by US&GS, USGS, GC and Oklahoma Geodetic Survey. This map complies with the national standard map accuracy requirements. Map not field checked.

LEGEND
ROAD DATA 1956
In developed areas, only through roads are classified

INDEX TO BOUNDARIES



INDEX TO ADJOINING SHEETS



FOR SALE BY U. S. GEOLOGICAL SURVEY, DENVER, COLORADO 80225 OR RESTON, VIRGINIA 22092

NELLIE, OKLAHOMA

NSN 7643014044332
NOA Ref No V783X63532

ED NO 003