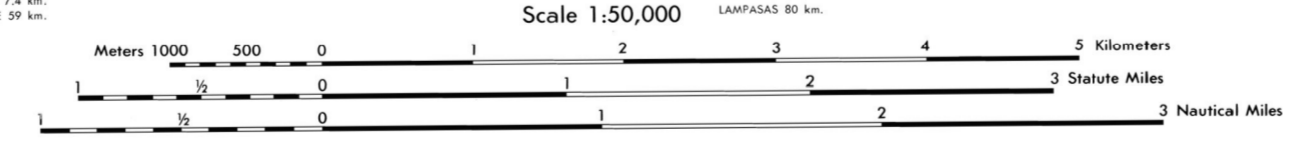


Prepared by the Army Map Service (GS), Corps of Engineers, U.S. Army, Washington, D.C. Compiled in 1968 from Texas 1:50,000, AMS, 6347 I, field checked, 1956. Planimetric detail revised by photogrammetric methods from aerial photography, 1966. Horizontal and vertical control by USGS and USC&GS. This map complies with the national standard map accuracy requirements. Map not field checked.

**LEGEND**

**ROAD DATA 1966**  
In developed areas, only through roads are classified

Hard surface, heavy duty road, four or more lanes wide	Improved light duty road, street
Hard surface, heavy duty road, two lanes wide; Three lanes wide	Unimproved dirt road
Hard surface, medium duty road, four or more lanes wide	Trail
Hard surface, medium duty road, two lanes wide; Three lanes wide	Route markers: Interstate; Federal; State
Buildings	Barns, sheds, greenhouses, stadiums, etc.
Standard gauge	Bench mark, non-monumented
Narrow gauge	Bench mark, monumented
In street	Spot elevations in meters
Car line	Light, lighthouse, windmill, wind pump; Water mill
Boundaries	Woods or brushwood
National	Scrub; Orchard
State (with monument)	Intermittent lake
County	Intermittent stream; Dam
County subdivision	Marsh or swamp
State limits	Rapids; Falls
Corporate limits	Rapids; Falls
Military reservation	Large rapids; Large falls
Other reservation	



**ELEVATIONS IN METERS**

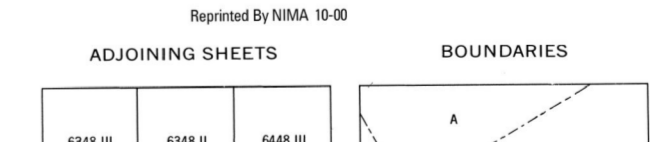
CONTOUR INTERVAL TO METERS  
VERTICAL DATUM: SEA LEVEL DATUM OF 1929

TRANSVERSE MERCATOR PROJECTION  
HORIZONTAL DATUM: 1927 NORTH AMERICAN DATUM

BLACK NUMBERED LINES INDICATE THE 1,000 METER UNIVERSAL TRANSVERSE MERCATOR GRID, ZONE 14, CLARKE 1866 SPHEROID

USERS SHOULD REFER TO CORRECTIONS, ADDITIONS, AND COMMENTS TO THE NGA OPERATIONAL HELP DESK: 1-800-455-0899; COMMERCIAL: 314-263-4864; DSN: 880-4864; OR WRITE TO: DIRECTOR, NATIONAL GEOSPATIAL-INTELLIGENCE AGENCY, ATTN: ES, MAH STOP L-88, 4800 SANGAMORE ROAD, BETHESDA, MD 20816-9303.

GRID ZONE DESIGNATION: 14R	TO GIVE A STANDARD REFERENCE ON THIS SHEET TO NEAREST 100 METERS
100,000 M. SQUARE IDENTIFICATION	SAMPLE POINT: PROVIDENCE CHURCH
NL	1. Read letters identifying 100,000 meter square in which the point lies.
	2. Locate first VERTICAL grid line to LEFT of point and read LARGE figure labeling the line either in the top or bottom margin, or on the line itself.
	3. Estimate tenths from grid line to point.
	4. Locate first HORIZONTAL grid line BELOW point and read LARGE figure labeling the line either in the left or right margin, or on the line itself.
	5. Estimate tenths from grid line to point.
IGNORE THE SMALLER figures of any grid number; these are for finding the full coordinates. Use ONLY the LARGER figures of the grid number; example: 3513000	SAMPLE REFERENCE: NL866358 Transverse Mercator (TM) or UTM, N, 1983, Grid Zone Designation, etc.



Registered By NIMA 10-00

FOR SALE BY U. S. GEOLOGICAL SURVEY, DENVER, COLORADO 80225 OR RESTON, VIRGINIA 22092

METRIC CONVERSION OF CONTOURS AND ELEVATIONS 1978  
THIS MAP IS RED-LIGHT READABLE

HICO, TEXAS

NSN 7643014044197  
NOA Ref No. V782X63471

ED NO. 004