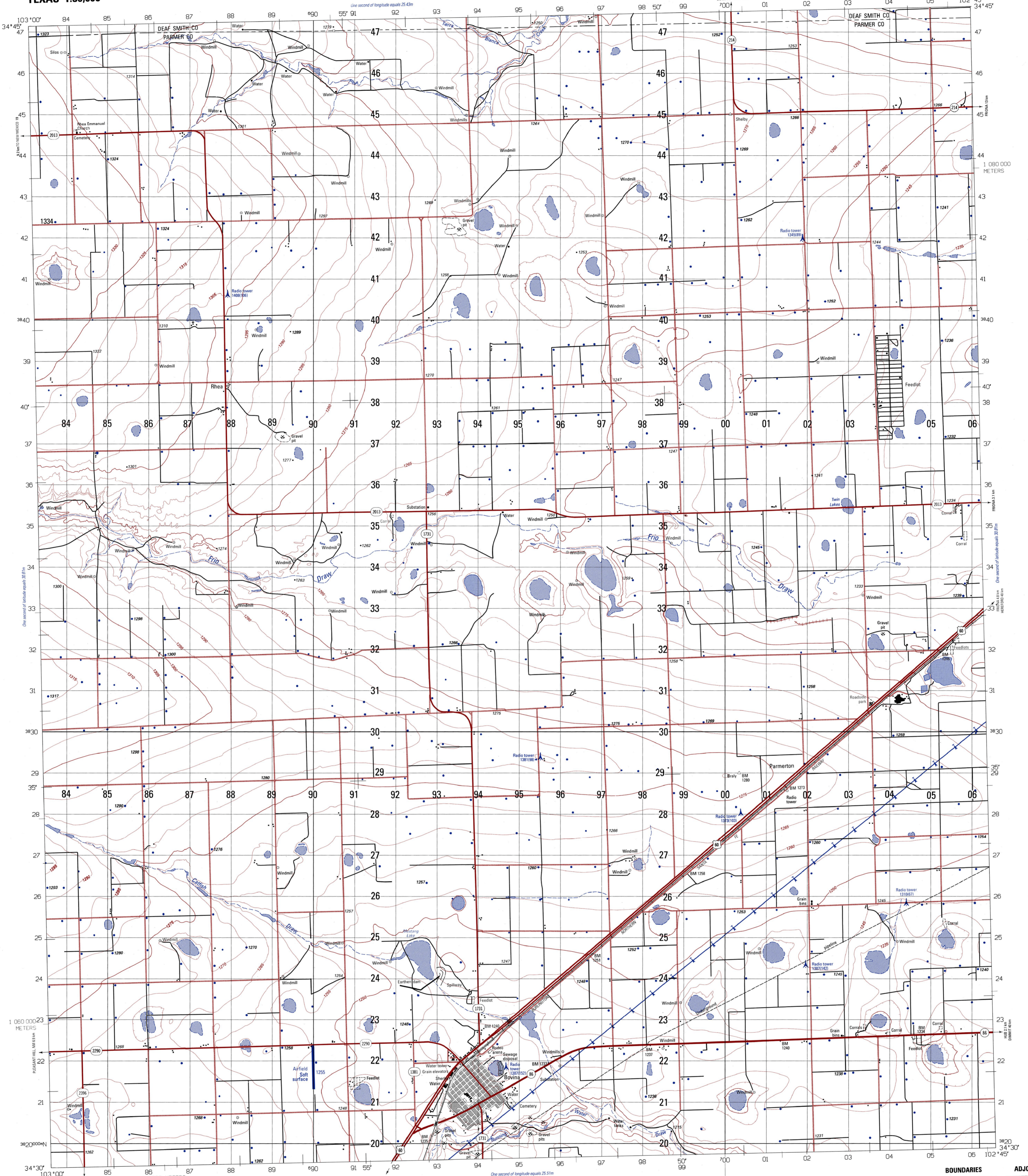


TEXAS 1:50,000

BOVINA



Prepared by the U.S. Geological Survey for Publication by the National Imagery and Mapping Agency

MAP INFORMATION AS OF 1996

LEGEND

- POPULATED PLACES**
 - Density built-up areas
 - Sparingly to moderately built-up areas
- ROADS**
 - Divided highway
 - All weather, hard surface
 - Two or more lanes wide
 - One lane wide
 - All weather, loose or light surface
 - Two or more lanes wide
 - One lane wide
 - Fair or dry weather, loose surface
 - Track
 - Trail
 - Route markers: Interstate
 - National, Secondary
- RAILROADS**
 - Narrow gauge 1.4m (4'6")
 - Narrow gauge 0.91m (3')
 - Electrified
- BRIDGES**
 - Production
 - Standard
 - Culvert
- MISCELLANEOUS CULTURAL FEATURES**
 - Church
 - Cemetery
 - Building: School, Hospital
 - Located object: Tank, Well
 - Minor: Active, Abandoned
 - Area name: Bovina

NOTES

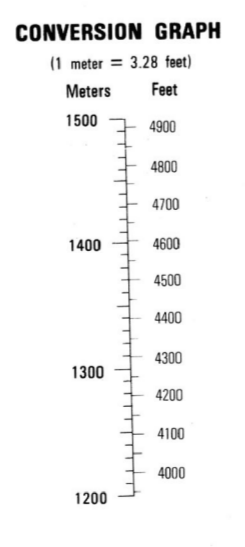
A LANE ON THIS MAP IS CONSIDERED TO BE AT LEAST 2.5 METERS (8 FEET) WIDE.

ROAD CLASSIFICATION SHOULD BE REFERRED TO WITH CAUTION.

IN DEVELOPED AREAS ONLY THROUGH ROADS ARE CLASSIFIED.

CAUTION: NOT ALL TELEPHONE AND ELECTRIC SERVICE LINES ARE SHOWN.

NORTH AMERICAN DATUM 1983 (NAD 83) AND WORLD GEODETIC SYSTEM 1984 (WGS 84) ARE EQUIVALENT FOR MAPPING, CHARTING AND NAVIGATION AT THIS SCALE.



ELEVATIONS IN METERS

CONTOUR INTERVAL 5 METERS

ELLIPSOID: WORLD GEODETIC SYSTEM 1984

GRID: 1,000-METER UTM ZONE 19 (BLACK NUMBERED LINES)

PROJECTION: TRANSVERSE MERCATOR

HORIZONTAL DATUM: NORTH AMERICAN DATUM 1983 (NAD 83)

VERTICAL DATUM: NORTH AMERICAN DATUM 1983 (NAD 83)

PREPARED BY: U.S. GEOLOGICAL SURVEY

DATE: NIMA 12-99

100 METER REFERENCE

1. Read large numbers labeling the VERTICAL grid line left of point and estimate tenths (0-9) meters from grid line to point. 12.3

2. Read large numbers labeling the HORIZONTAL grid line below point and estimate tenths (0-9) meters from grid line to point. 45.6

Example: 12345.6

WHEN REPORTING ACROSS A 100,000 METER SQUARE

LINE, PREFIX THE 6-DIGIT METER SQUARE IDENTIFICATION IN WHICH THE POINT LIES.

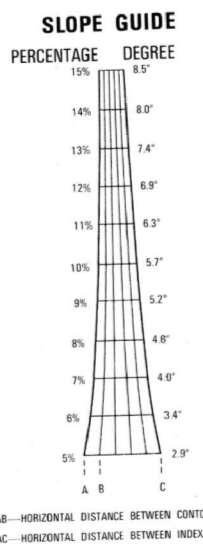
Example: U123456

WHEN REPORTING OUTSIDE THE GRID ZONE DESIGNATION AREA, PREFIX THE GRID ZONE DESIGNATION.

Example: 13SFU123456

GRID CONVERGENCE 1'12" (21.1 MILS) FOR CENTER OF SHEET

THIS MAP IS RED AND BLUE/GREEN LIGHT READABLE



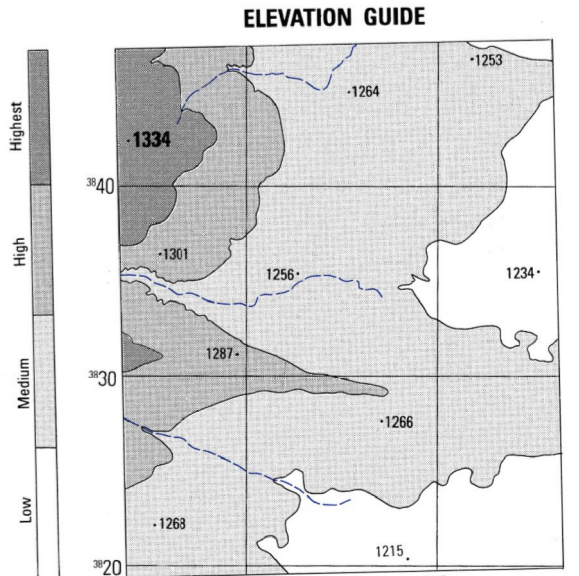
BOUNDARIES

Deaf Smith County

Parker County

ADJOINING SHEETS

5453 I	5453 II	5453 III
5453 IV	5453 V	5453 VI



USGS 34102-E7-TM-050

NSN 7643014666155 NIMA Ref No: V782X54533