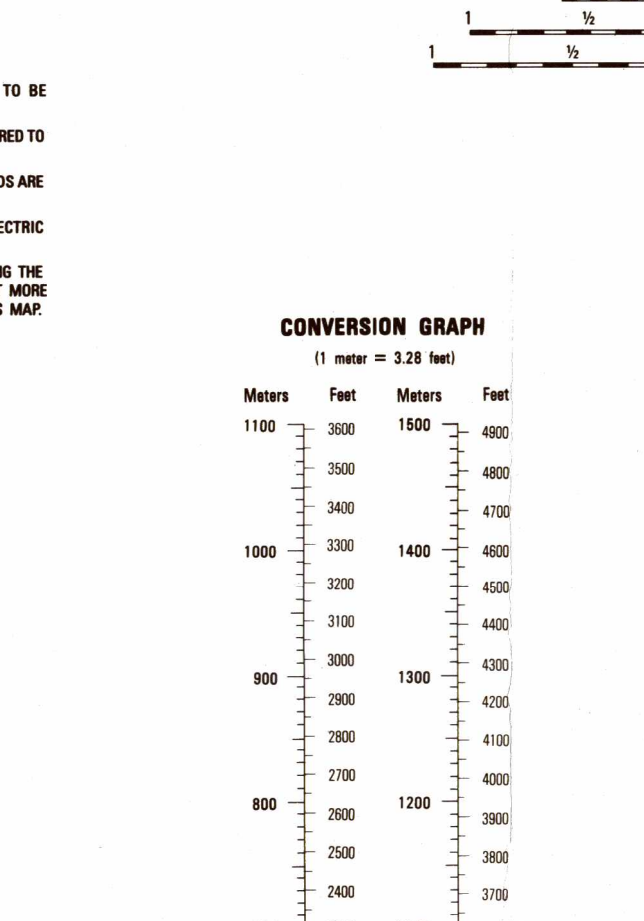


Prepared by the U.S. Geological Survey for Publication by the National Imagery and Mapping Agency
MAP INFORMATION AS OF 1996

- #### LEGEND
- POPULATED PLACES:**
 - Densely built-up areas
 - Sparsely to moderately built-up areas
 - Open land
 - ROADS:**
 - All weather, hard surface
 - Two or more lanes wide
 - One lane wide
 - All weather, loose or light surface
 - Two or more lanes wide
 - One lane wide
 - RAILROADS:**
 - Normal gauge 1.44m (4'8 1/2")
 - Narrow gauge 0.91m (3'0")
 - ELECTRICITY:**
 - Overhead
 - Standard
 - Underground
 - MISCELLANEOUS CULTURAL FEATURES:**
 - Cemetery
 - Building, School, Hospital
 - Located object, Tank, Well
 - Misc. Active, Abandoned
 - Area name: Casa Piedra
 - OBSTRUCTIONS:**
 - Elevation of obstruction top above sea level
 - Elevation of obstruction top above ground level
 - High tension power line: communication tower
 - BOUNDARIES:**
 - First-order administrative division
 - RELIEF:**
 - Shelf, cliff, escarpment
 - Depression
 - Level, Sand
 - Spot elevations: Highest, Normal
 - Drainage: Perennial, Intermittent
 - Streams: Less than 25m wide, Over 25m wide
 - Lake, pond
 - Spring
 - Ditch
 - Dike
 - Disappearing stream
 - Rock subject to inundation
 - Vegetation: Woodland, Sparse, Scattered trees
 - District, Viewpoint



Scale 1:50,000

Meters 1000 500 0 1 2 3 4 5 Kilometers
3 Nautical Miles

ELEVATIONS IN METERS

CONTOUR INTERVAL 40 METERS

ELLIPSOID: 1983
PROJECTION: Universal Transverse Mercator
VERTICAL DATUM: Mean Sea Level
PRINTED BY: U.S. GEOLOGICAL SURVEY

SAMPLE 1000 METER GRID SQUARE

46
12
13
45

100,000 M. SQUARE IDENTIFICATION: EN

GRID ZONE DESIGNATION: 13R

100 METER REFERENCE

1. Read large numbers labeling the VERTICAL grid line left of point and estimate number (100 meters) from grid line to point 1, 2, 3

2. Read large numbers labeling the HORIZONTAL grid line below point and estimate tenths (100 meters) from grid line to point 4, 5

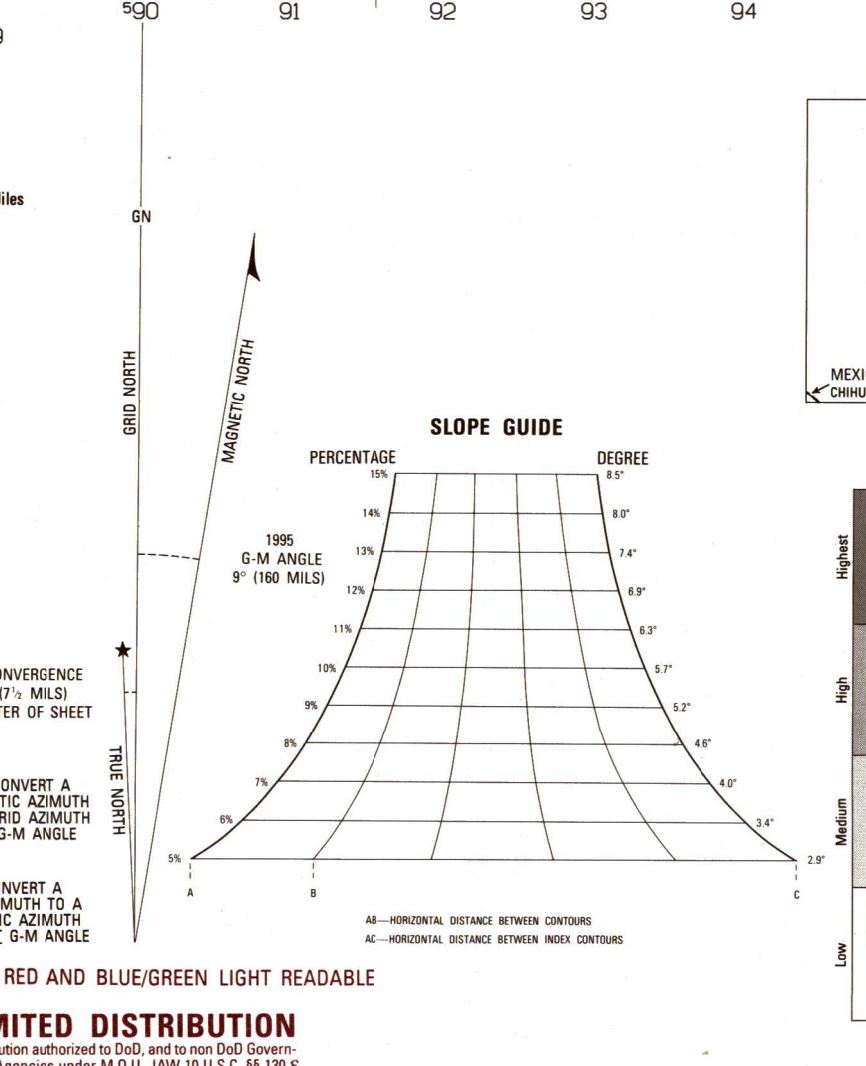
Example: 123456

WHEN REPORTING ACROSS A 100,000 METER LINE, PREFIX THE 100,000 METER SQUARE IDENTIFICATION IN WHICH THE POINT LIES.
Example: EN123456

WHEN REPORTING OUTSIDE THE GRID ZONE DESIGNATION AREA, PREFIX THE GRID ZONE DESIGNATION.
Example: 13REN123456

WHEN REPORTING ACROSS A 100,000 METER LINE, PREFIX THE 100,000 METER SQUARE IDENTIFICATION IN WHICH THE POINT LIES.

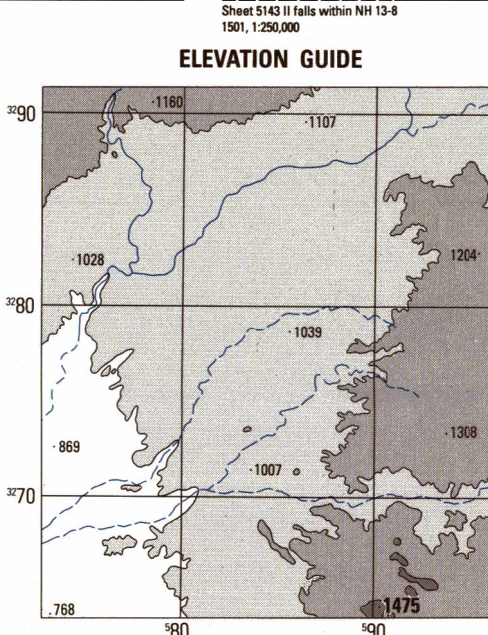
WHEN REPORTING OUTSIDE THE GRID ZONE DESIGNATION AREA, PREFIX THE GRID ZONE DESIGNATION.



BOUNDARIES

UNITED STATES
TEXAS
Presidio County

MEXICO
Coahuila



ADJOINING SHEETS

5143 I	5143 II	5143 III	5143 IV
5142 I	5142 II	5142 III	5142 IV
5141 I	5141 II	5141 III	5141 IV

5143 II 5143 I 5143 III 5143 IV