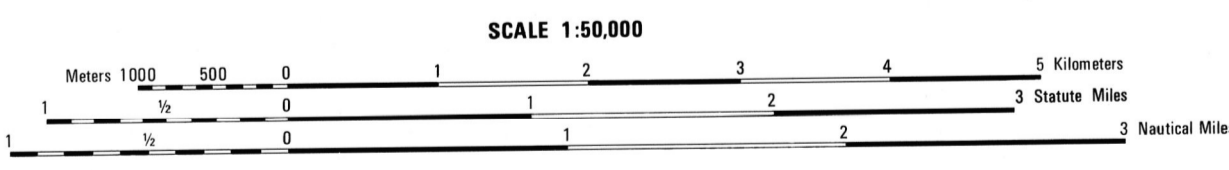


Prepared by the U. S. Geological Survey for publication by the Defense Mapping Agency Hydrographic/Topographic Center, Washington, D. C.  
 MAP INFORMATION AS OF 1983.

**LEGEND**

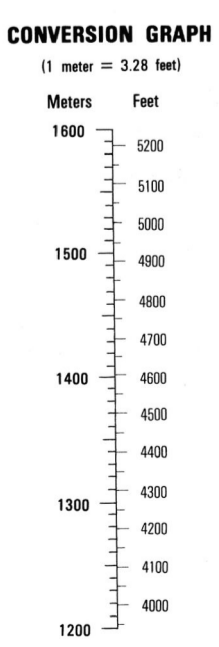
CAUTION: ALL TELEPHONE AND ELECTRIC SERVICE LINES ARE NOT SHOWN.  
 A LANE ON THIS MAP IS CONSIDERED TO BE 2.5 METERS WIDE.

- |   |   |
|---|---|
| <p><b>ROADS</b></p> <ul style="list-style-type: none"> <li>Divided highway with median strip</li> <li>Primary, all weather, hard surface</li> <li>Secondary, all weather, hard surface</li> <li>Light duty, all weather, hard or improved surface</li> <li>Fair or dry weather, unimproved surface</li> <li>Trail</li> <li>Route markers: Interstate, Federal, State</li> <li>Bus stop</li> <li>RAILROADS (Standard gauge 1.44m - 4'8 1/2")</li> <li>Single track</li> <li>Multiple track</li> <li>Nonoperating</li> <li>Railroad station: Location known; Location unknown</li> <li>Car line</li> <li>Railroad bridge</li> <li>Tunnel: Highway, Railroad</li> <li>BOUNDARIES</li> <li>National, with monument</li> <li>State, territory</li> <li>County, parish</li> <li>Civil township, town</li> <li>Incorporated city, village, town</li> <li>Reservation: National, State, Military</li> </ul> | <ul style="list-style-type: none"> <li>Power transmission line</li> <li>Buildings</li> <li>Church, School</li> <li>Power substation</li> <li>Windmill; Watermill</li> <li>Well; Tank</li> <li>Mine shaft</li> <li>Open pit mine or quarry</li> <li>Horizontal control station</li> <li>Bench mark, monument</li> <li>Bench mark, non-monumented</li> <li>Spot elevations in meters</li> <li>Layers, dikes, dikes</li> <li>Bluffs, cliffs</li> <li>Woodland</li> <li>Scattered trees; Scrub</li> <li>Viewpoint; Orchard; plantation</li> <li>Intermittent lake; Dam; Cattle; Masonry</li> <li>Stream; Perennial; Intermittent</li> <li>Marsh, swamp</li> <li>Small falls; Large falls</li> <li>Small rapids; Large rapids</li> </ul> |
|---|---|



**ELEVATIONS IN METERS**

CONTOUR INTERVAL 20 METERS



SPHEROID: CLARKE 1866  
 GRID: 10,000-FOOT STATE GRID TICS, NEW MEXICO (EAST ZONE)  
 PROJECTION: TRANSVERSE MERCATOR  
 VERTICAL DATUM: NATIONAL GEODETIC VERTICAL DATUM OF 1929  
 HORIZONTAL DATUM: 1927 NORTH AMERICAN DATUM  
 CONTROL BY: USGS AND NOS/NOAA  
 PREPARED BY: U. S. GEOLOGICAL SURVEY  
 PUBLISHED BY: DMA/HTC/488

FOR SALE BY U. S. GEOLOGICAL SURVEY, DENVER, COLORADO 80225  
 OR RESTON, VIRGINIA 22092

**100 METER REFERENCE**

SAMPLE 1 000 METER GRID SQUARE

1. Read large numbers labeling the VERTICAL grid line left of point and estimate tenths (100 meters) from grid line to point 12.3

2. Read large numbers labeling the HORIZONTAL grid line below point and estimate tenths (100 meters) from grid line to point 45.8

Example: 123456

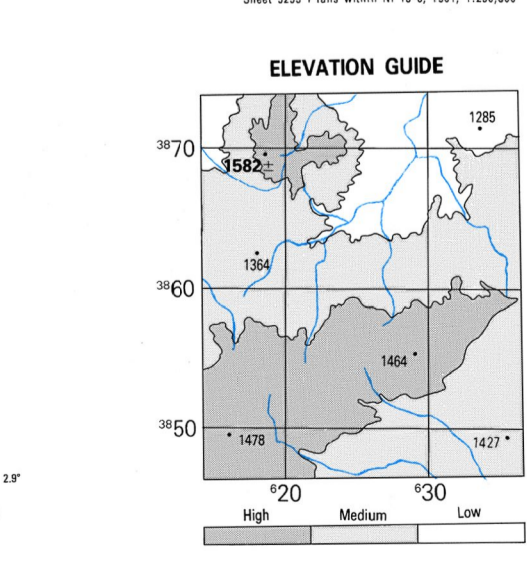
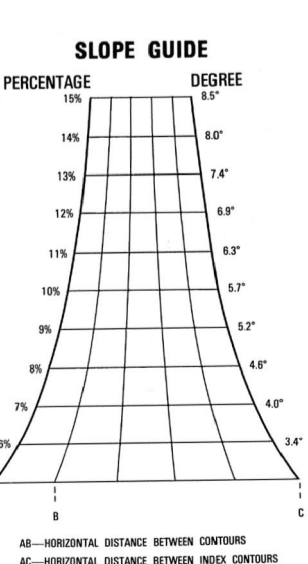
WHEN REPORTING ACROSS A 100,000 METER LINE, PREFIX THE 100,000 METER SQUARE DESIGNATION IN WHICH THE POINT LIES.

Example: 123456

WHEN REPORTING OUTSIDE THE GRID ZONE DESIGNATION AREA, PREFIX THE GRID ZONE DESIGNATION.

Example: 18SF123456

THIS MAP IS RED-LIGHT READABLE



**BOUNDARIES**

Quay County

**ADJOINING SHEETS**

|          |         |          |
|----------|---------|----------|
| 5254 III | 5254 II | 5254 I   |
| 5253 IV  | 5253 I  | 5253 IV  |
| 5253 III | 5253 II | 5253 III |

Sheet 5253 I falls within N 13-4, 1501, 1:50,000