

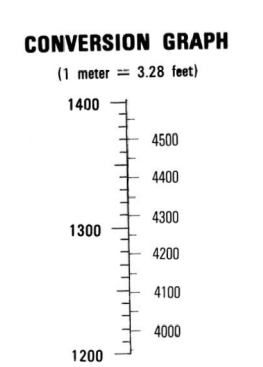
Prepared by the U. S. Geological Survey for publication by the Defense Mapping Agency  
 MAP INFORMATION AS OF 1983.

**LEGEND**

CAUTION: ALL TELEPHONE AND ELECTRIC SERVICE LINES ARE NOT SHOWN.  
 A LANE ON THIS MAP IS CONSIDERED TO BE 2.5 METERS WIDE.

- ROADS**
- Divided highway with median strip
- Primary, all weather, hard surface
- Secondary, all weather, hard surface
- Light duty, all weather, hard or improved surface
- Fair or dry weather, unimproved surface
- Trail
- Road markers: Interstate, Federal, State
- Bridge
- RAILROADS (Standard gauge 1.44m - 4'9 1/2")
- Single track
- Multiple track
- Nonoperating
- Railroad station: Location known; Location unknown
- Car line
- Railroad bridge
- Tunnel: Highway, Railroad
- BOUNDARIES**
- National, with monument
- State, territory
- County, parish
- Civil township, town
- Incorporated city, village, town
- Reservation: National, State, Military

- Power transmission line
- Buildings
- Structures
- Church; School
- Power substation
- Wellhead; Watermill
- Well; Tank
- Mill; shaft
- Open pit mine or quarry
- Horizontal control station
- Bench mark, monument
- Bench mark, non-monumented
- Spot elevations in meters
- Leaves, trim; cilia
- Bluffs, cliffs
- Woodland
- Scattered trees; Scrub
- Vineyard; Orchard; plantation
- Interriment site: Dunes; Masonry
- Stream; Perennial; Intermittent
- Marsh; swamp
- Small falls; Large falls
- Small rapids; Large rapids

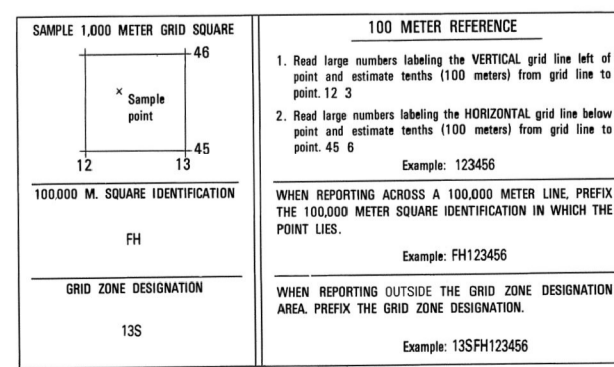


**ELEVATIONS IN METERS**

**CONTOUR INTERVAL 10 METERS**

**SPHEROID** ..... CLARKE 1880  
**GRID** ..... 1000-METER UTM ZONE 13 (BLACK NUMBERED LINES)  
**PROJECTION** ..... 10,000-FOOT STATE GRID TICS, NEW MEXICO (EAST ZONE)  
**TRANSFORMER MEASUREMENT** ..... TRANSFORMER MEASUREMENT  
**VERTICAL DATUM** ..... NATIONAL GEODETIC VERTICAL DATUM OF 1929  
**HORIZONTAL DATUM** ..... 1927 NORTH AMERICAN DATUM  
**CONTROL BY** ..... USGS AND NOS/NOAA  
**PREPARED BY** ..... U. S. GEOLOGICAL SURVEY  
 Reprinted by NIMA 10-00

FOR SALE BY U. S. GEOLOGICAL SURVEY, DENVER, COLORADO 80225  
 OR RESTON, VIRGINIA 22092



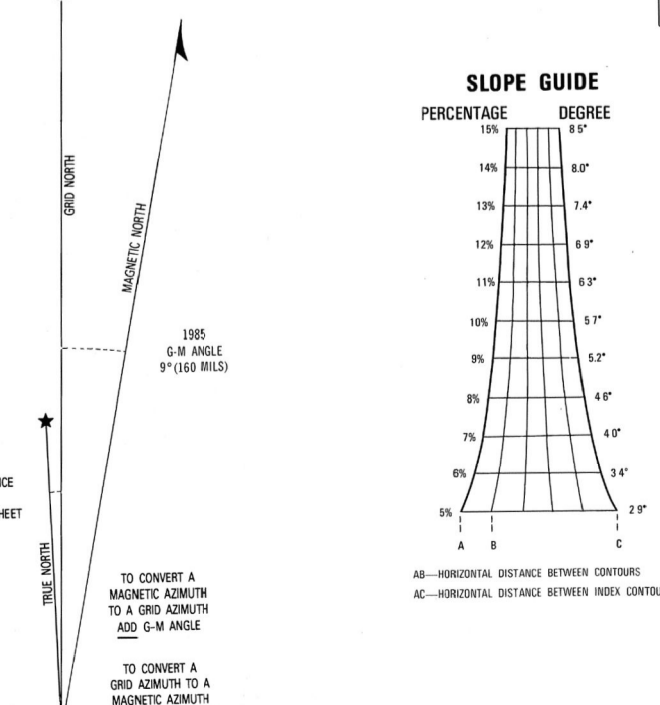
**BOUNDARIES**

Roosevelt County

**ADJOINING SHEETS**

5252 IV	5252 I	5252 V
5252 III	5252 II	5252 III
5251 IV	5251 I	5251 V

Sheet 5252 I falls within N 13-16, 1901, 1:250,000



THIS MAP IS RED-LIGHT READABLE

NSN 7643014052539  
 NGA Ref No. V781X52522

ED. NO. 001