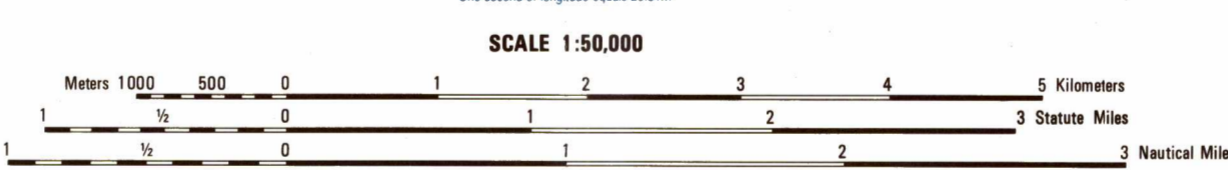


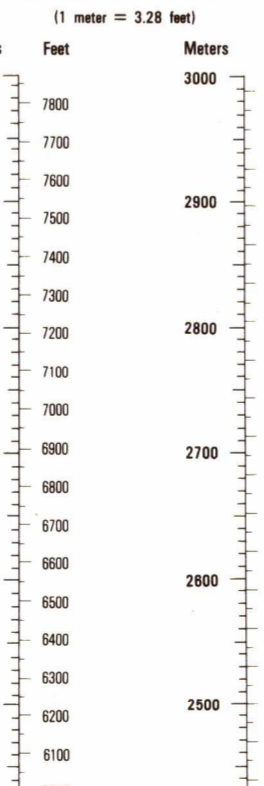
Prepared by the U. S. Geological Survey for publication by the Defense Mapping Agency Hydrographic Topographic Center, Washington, D. C.
 MAP INFORMATION AS OF 1982.



LEGEND

- CAUTION: ALL TELEPHONE AND ELECTRIC SERVICE LINES ARE NOT SHOWN.
 A LANE ON THIS MAP IS CONSIDERED TO BE 2.5 METERS WIDE.
 THERE MAY BE PRIVATE INHOLDINGS WITHIN THE BOUNDARIES OF THE NATIONAL OR STATE RESERVATIONS SHOWN ON THIS MAP.
- | | |
|---|---|
| <p>ROADS</p> <ul style="list-style-type: none"> Divided highway with median strip Primary, all weather, hard surface Secondary, all weather, hard surface Light duty, all weather, hard or improved surface Fair or dry weather, unimproved surface Trail Route markers: Interstate, Federal, State Bridge RAILROADS (Standard gauge 1.44m - 4'8 1/2") Single track Multiple track RAILROAD STATION: Location known; Location unknown Car line Railroad bridge Tunnel: Highway, Railroad <p>BOUNDARIES</p> <ul style="list-style-type: none"> National, with monument State, territory County, parish Civil township, town Incorporated city, village, town Reservation: National, State, Military | <ul style="list-style-type: none"> Power transmission line Buildings Structures Church, School Power substation Windmill, Watermill Well, Tank Mine shaft Open pit mine or quarry Horizontal control station Bench mark, monument Bench mark, non-monumented Spot elevations in meters Levee, dam, dike Bluffs, cliffs Woodland Scattered trees; Scrub Vineyard; Orchard; plantation Intermittent lake; Dam; Embankment Stream; Perennial; Intermittent Marsh, swamp Small falls; Large falls Small rapids; Large rapids |
|---|---|

CONVERSION GRAPH
 (1 meter = 3.28 feet)



ELEVATIONS IN METERS

CONTOUR INTERVAL 20 METERS

SPHEROID CLARKE 1866
 GRID 1000-METER UTM ZONE 13 (BLACK NUMBERED LINES)
 GRID 1000-FOOT STATE GRID, NEW MEXICO (GRAY LINES)
 PROJECTION TRANSVERSE MERCATOR
 VERTICAL DATUM NATIONAL GEODETIC VERTICAL DATUM OF 1929
 HORIZONTAL DATUM 1927 NORTH AMERICAN DATUM
 CONTROL BY USGS AND NOS/NOAA
 PREPARED BY U. S. GEOLOGICAL SURVEY

Reprint by NMA 01-00

FOR SALE BY U.S. GEOLOGICAL SURVEY, DENVER, COLORADO 80225
 OR RESTON, VIRGINIA 22092

SAMPLE 1000 METER GRID SQUARE

Grid coordinates: 12 45

Grid zone designation: 13S

100 METER REFERENCE

1. Read large numbers labeling the VERTICAL grid line left of point and estimate tenths (100 meters) from grid line to point 12.2

2. Read large numbers labeling the HORIZONTAL grid line below point and estimate tenths (100 meters) from grid line to point 45.8

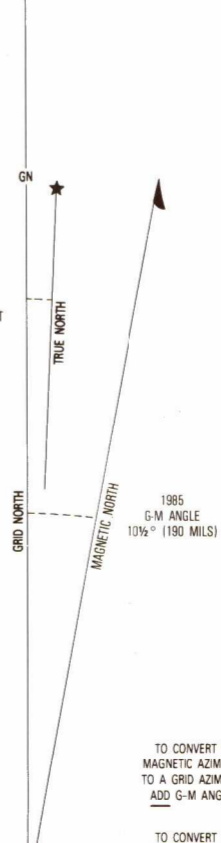
Example: 12205.8

WHEN REPORTING ADDRESS: 100,000 METER LINE, PREFIX THE 10,000 METER SQUARE IDENTIFICATION IN WHICH THE POINT LIES.

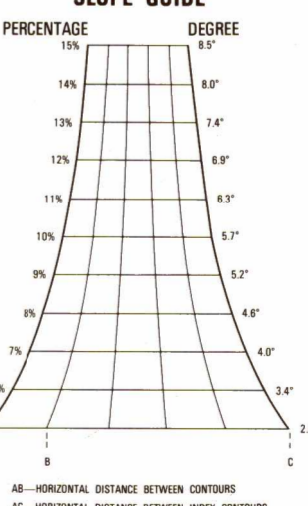
Example: 13SDH123456

WHEN REPORTING ADDRESS THE GRID ZONE DESIGNATION AREA, PREFIX THE GRID ZONE DESIGNATION.

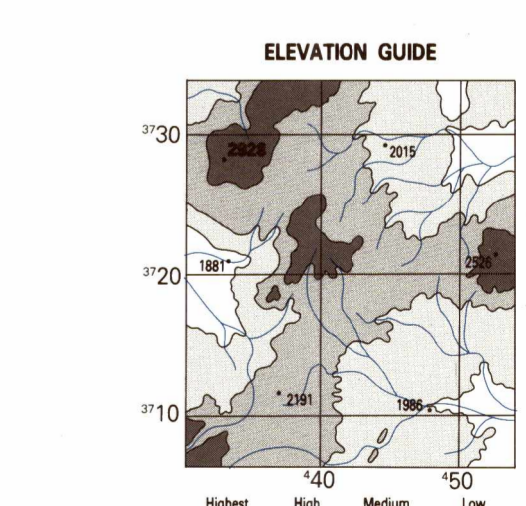
Example: 13SDH123456



SLOPE GUIDE



ELEVATION GUIDE



BOUNDARIES **ADJOINING SHEETS**

