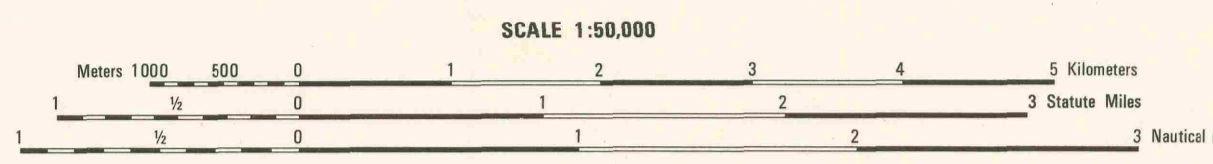
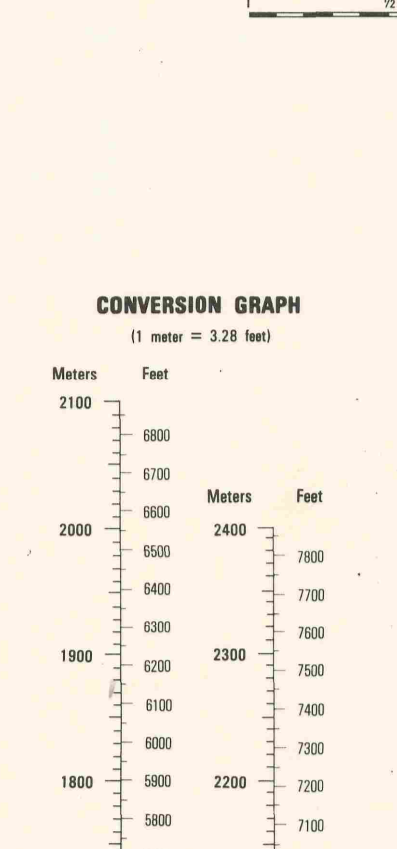
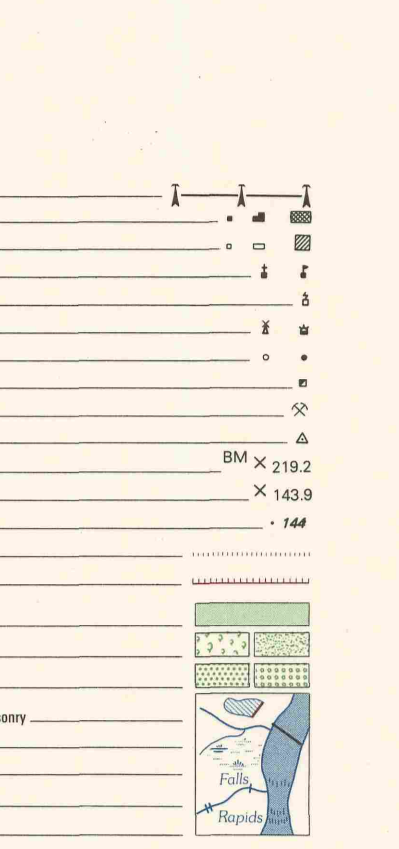


Prepared by the U.S. Geological Survey for publication by the Defense Mapping Agency Hydrographic/Topographic Center, Washington, D.C.
 MAP INFORMATION AS OF 1986



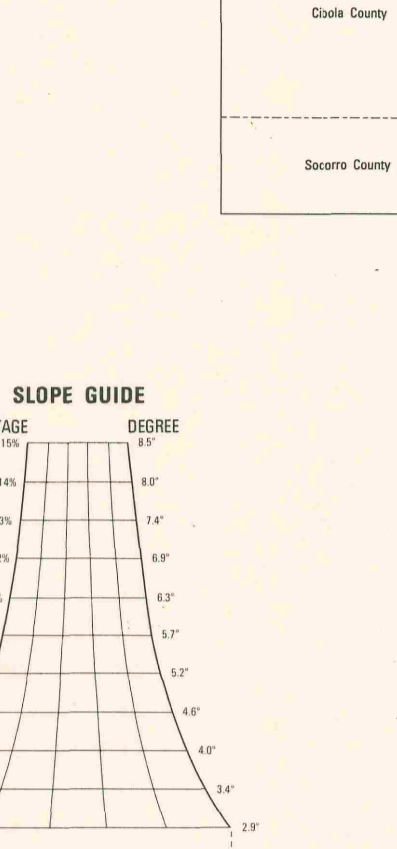
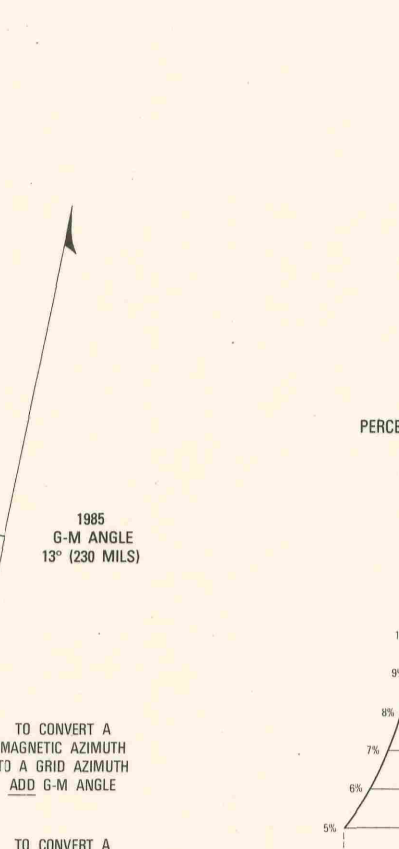
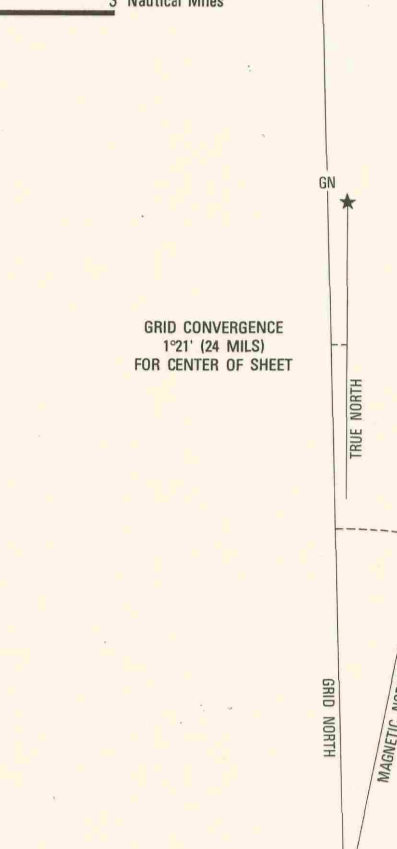
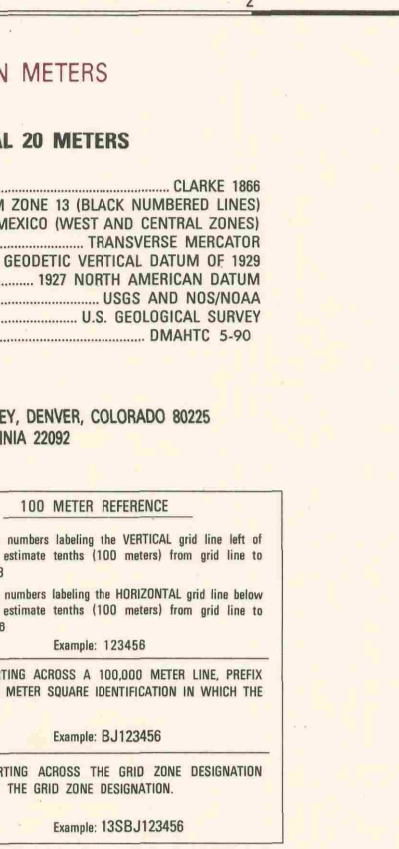
CAUTION: ALL TELEPHONE AND ELECTRIC SERVICE LINES ARE NOT SHOWN.
 A LANE ON THIS MAP IS CONSIDERED TO BE 2.5 METERS WIDE.
 IN DEVELOPED AREAS ONLY THROUGH ROADS ARE CLASSIFIED.
 THERE MAY BE PRIVATE HOLDINGS WITHIN THE BOUNDARIES OF THE NATIONAL OR STATE RESERVATIONS SHOWN ON THIS MAP.

- LEGEND**
- Roads: Divided highway with median strip, Primary, all weather, hard surface, Secondary, all weather, hard or improved surface, Light duty, all weather, hard or improved surface, Fair or dry weather, unimproved surface, Trail, Route markers: Interstate, Federal, State
 - Bridges: Bridge, Railroad bridge
 - Railroads: Standard gauge (1.44m - 4'8 1/2"), Single track, Multiple track, Nonoperating, Railroad station: Location known, Location unknown, Car line, Tunnel: Highway, Railroad
 - BOUNDARIES: National, with monument, State, territory, County, parish, Civil township, town, Incorporated city, village, town, Reservation: National, State, Military
 - Power transmission line, Buildings, Structures, Church, School, Power substation, Windmill, Watermill, Well, Tank, Mine shaft, Open pit mine or quarry, Historical aerial station, Bench mark, monument, Bench mark, non-monumented, Spot elevations in meters, Levees, rims, dikes, Bluffs, cliffs, Woodland, Scattered trees, scrub, Vineyard, Orchard, plantation, Irrigation lake, Dam, Earthen, Masonry, Stream, Perennial, Intermittent, Marsh, swamp, Small falls, Large falls, Small rapids, Large rapids



ELLIPSOID: CLARKE 1866
 GRID: 1,000-METER UTM ZONE 13 (BLACK NUMBERED LINES)
 10,000-FOOT STATE GRID TICS, NEW MEXICO (WEST AND CENTRAL ZONES)
 PROJECTION: TRANSVERSE MERCATOR
 VERTICAL DATUM: NATIONAL GEODETIC VERTICAL DATUM OF 1929
 HORIZONTAL DATUM: 1927 NORTH AMERICAN DATUM
 CONTROL BY: U.S. AND MEXICAN
 PREPARED BY: U.S. GEOLOGICAL SURVEY
 PUBLISHED BY: DMAHTC 5-90

FOR SALE BY U.S. GEOLOGICAL SURVEY, DENVER, COLORADO 80225
 OR RESTON, VIRGINIA 22092



THIS MAP IS RED-LIGHT READABLE
 USGS 34107-C3-TM-050
 DMA STOCK NO. V781X45533