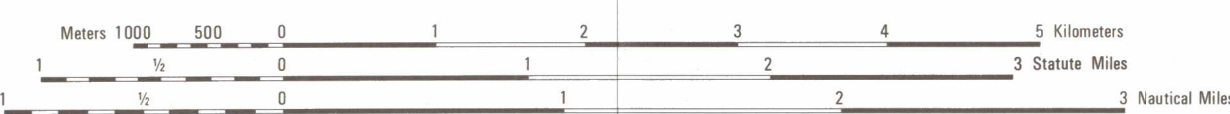


Prepared by the U.S. Geological Survey for Publication by the National Imagery and Mapping Agency

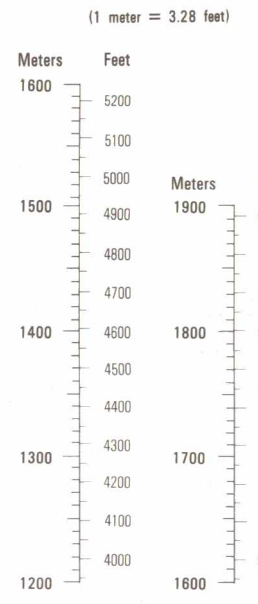
Scale 1:50,000



ELEVATIONS IN METERS
CONTOUR INTERVAL 10 METERS

ELLIPSOID: WORLD GEODETIC SYSTEM 1984
 GRID: 1,000-METER UTM ZONE 13 (BLACK NUMBERED LINES)
 DATUM: 5,000-METER STATE GRID TICS, NEW MEXICO (CENTRAL ZONE)
 PROJECTION: TRANSVERSE MERCATOR
 VERTICAL DATUM: NATIONAL GEODETIC DATUM OF 1929
 HORIZONTAL DATUM: NORTH AMERICAN DATUM (NAD 83)
 PREPARED BY: U.S. GEOLOGICAL SURVEY
 PRINTED BY: NIMA 1-90

CONVERSION GRAPH



SAMPLE 1,000 METER GRID SQUARE

100,000 M. SQUARE IDENTIFICATION: BR CR 90

GRID ZONE DESIGNATION: 13R

100 METER REFERENCE

1. Read large numbers labeling the VERTICAL grid line left of point and estimate meters (100 meters) from grid line to point. 12 3

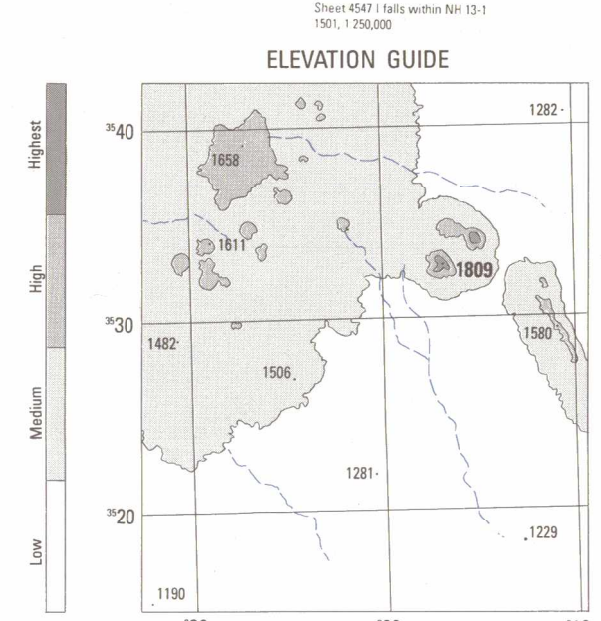
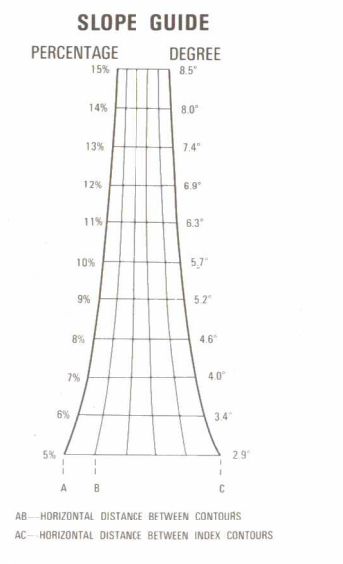
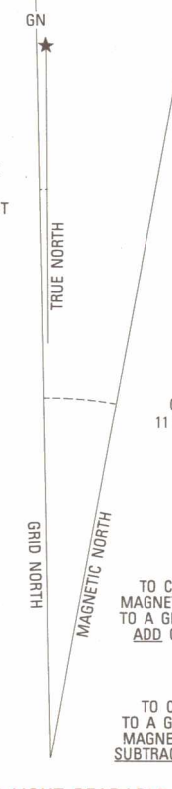
2. Read large numbers labeling the HORIZONTAL grid line below point and estimate tenths (100 meters) from grid line to point. 45.6

Example: 12345.6

WHEN REPORTING ACROSS A 100,000 METER LINE, PREFIX THE 100,000 METER SQUARE IDENTIFICATION IN WHICH THE POINT LIES. Example: BR123456

WHEN REPORTING OUTSIDE THE GRID ZONE DESIGNATION AREA, PREFIX THE GRID ZONE DESIGNATION. Example: 13RBR123456

GRID CONVERGENCE
 1°07' (20 METERS)
 FOR CENTER OF SHEET



BOUNDARIES

UNITED STATES	NEW MEXICO	DOÑA ANA COUNTY
MEXICO	CHIHUAHUA	

ADJOINING SHEETS

4548 III	4548 II	4548 III
4547 IV	4547 I	4547 IV
3577 III	MEXICO 3577 II	3577 III
3791	3577 I	3577 II

LEGEND

POPULATED PLACES
 Densely built-up areas
 Sparingly to moderately built-up areas

ROADS
 Divided highway
 All weather, hard surface
 Two or more lanes wide
 One lane wide
 All weather, loose or light surface
 Two or more lanes wide
 One lane wide

RAILROADS
 Normal gauge 1.44m (4'8 1/2")
 Narrow gauge 0.91m (2'11")
 Electrified

BRIDGES
 Pedestrian
 Standard
 Culvert

MISCELLANEOUS CULTURAL FEATURES
 Church
 Cemetery
 Building: School, Hospital
 Localized object: Tank, Well
 Standard
 Area name: La Peña

OBSTRUCTIONS
 Elevation of obstruction top above sea level: 200
 Elevation of obstruction top above ground level: 1800
 High tension power line: communication tower
 Single Group

BOUNDARIES
 International
 First-order administrative division

RELIEF
 Bluff, cliff, escarpment
 Depression
 Level: Sand
 Spot elevations: Highest: Normal 1809 1256
 Perennial Intermittent

DRAINAGE
 Stream: Less than 25m wide, Over 25m wide
 Lake/pond
 Spring
 Well
 Ditches: Less than 25m wide, Over 25m wide
 Tank
 Dispersing stream
 Land subject to inundation

VEGETATION
 Woodland
 Scrub: Scattered trees
 Land: Vineyard

NOTES
 A LANE ON THIS MAP IS CONSIDERED TO BE AT LEAST 2.5 METERS (8 FEET) WIDE.
 ROAD CLASSIFICATION SHOULD BE REFERRED TO WITH CAUTION.
 IN DEVELOPED AREAS ONLY THROUGH ROADS ARE CLASSIFIED.
 CAUTION: NOT ALL TELEPHONE AND ELECTRIC SERVICE LINES ARE SHOWN.
 NORTH AMERICAN DATUM 1983 (NAD 83) AND WORLD GEODETIC SYSTEM 1984 (WGS 84) ARE EQUIVALENT FOR MAPPING, CHARTING AND NAVIGATION AT THIS SCALE.