

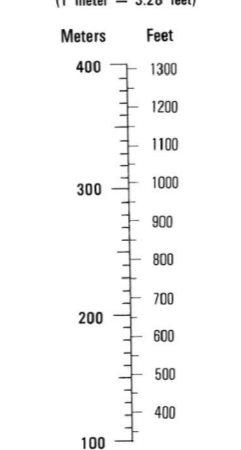
Prepared by the U.S. Geological Survey for publication by the Defense Mapping Agency Hydrographic/Topographic Center, Washington, D.C. MAP INFORMATION AS OF 1988 AND 1989.

LEGEND

CAUTION: ALL TELEPHONE AND ELECTRIC SERVICE LINES ARE NOT SHOWN. A LANE ON THIS MAP IS CONSIDERED TO BE 2.5 METERS WIDE. IN DEVELOPED AREAS ONLY THROUGH ROADS ARE CLASSIFIED. THERE MAY BE PRIVATE INHOLDINGS WITHIN THE BOUNDARIES OF THE NATIONAL OR STATE RESERVATIONS SHOWN ON THIS MAP.

- ROADS: Divided highway with median strip, Primary, all weather, hard surface, Secondary, all weather, hard surface, Light duty, all weather, hard or improved surface, Fair or dry weather, unimproved surface, Trail, Route markers: Interstate, Federal, State, Bridge, Railroads (Standard gauge 1.44m - 4'8 1/2"), Single track, Multiple track, Nonoperating, Railroad station: Location known, Location unknown, Car line, Railroad bridge, Tunnel: Highway, Railroad, BOUNDARIES: National, with monument, State, territory, County, parish, Civil township, town, Incorporated city, village, town, Reservation: National, State, Military
- Power transmission line, Buildings, Churches, School, Power substation, Windmill, Watermill, Well, Tank, Mine shaft, Open pit mine or quarry, Horizontal control station, Bench mark, monument, Bench mark, non-monumented, Spot elevations in meters, Levees, dikes, Bluffs, cliffs, Woodland, Scattered trees: Scrub, Vineyard, Orchard, plantation, Intermittent lake: Dam, Earthen, Masonry, Stream: Perennial, Intermittent, Marsh, swamp, Small falls: Large falls, Small rapids: Large rapids

CONVERSION GRAPH

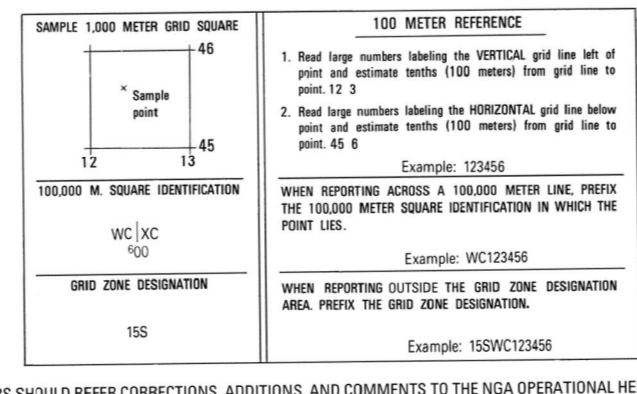


ELEVATIONS IN METERS

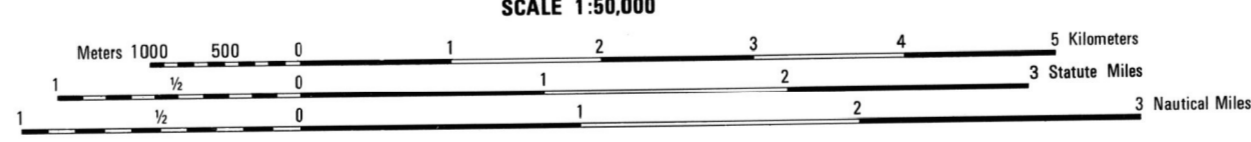
CONTOUR INTERVAL 20 METERS

ELLIPSOID: GEODETIC REFERENCE SYSTEM 1980 GRID: 1,000 METER UTM ZONE 18 (BLACK NUMBERED LINES) 5,000 METER STATE GRID TICS, MISSOURI (CENTRAL ZONE) TRANSVERSE MERCATOR PROJECTION: NATIONAL GEODETIC TRANSVERSE MERCATOR VERTICAL DATUM: NORTH AMERICAN DATUM OF 1983 HORIZONTAL DATUM: NORTH AMERICAN DATUM OF 1983 CONTROL BY: U.S. AND NOS/NOAA PREPARED BY: U.S. GEOLOGICAL SURVEY

FOR SALE BY U.S. GEOLOGICAL SURVEY DENVER, COLORADO 80225, OR RESTON, VIRGINIA 20192

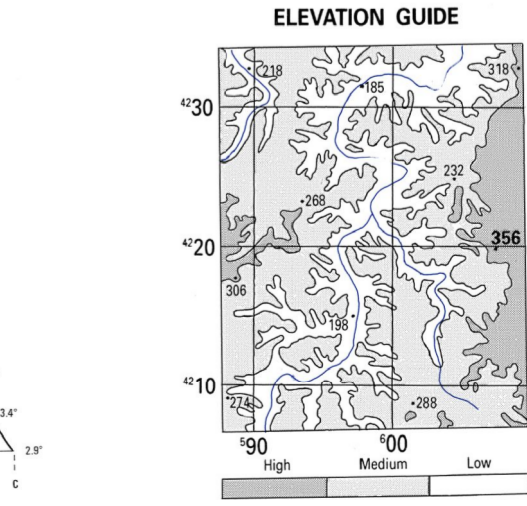
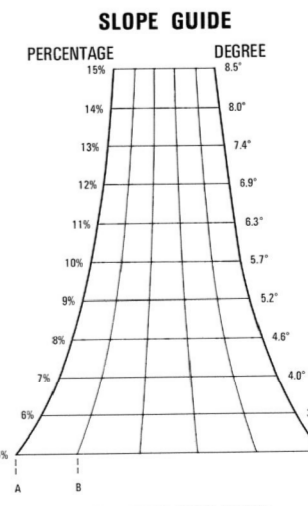


USERS SHOULD REFER TO CORRECTIONS, ADDITIONS, AND COMMENTS TO THE NGA OPERATIONAL HELP DESK: 1-800-455-8898 COMMERCIAL 314-263-4866 FOR WRITING TO DIRECTOR, NATIONAL GEOSPATIAL INTELLIGENCE AGENCY, ATTN: ES, MAIL STOP 1-88, 4800 SANGAMORE ROAD, BETHESDA, MD 20818-5003.



THIS MAP IS RED-LIGHT READABLE

Reprinted by NIMA 10-00



BOUNDARIES: Maries County, Phelps County. ADJOINING SHEETS: 7560 I, 7600 I, 7660 I, 7550 I, 7650 I, 7690 I.