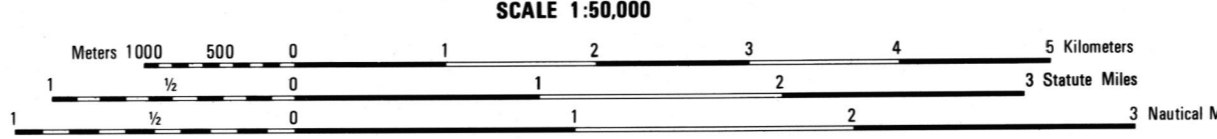


Prepared by the U.S. Geological Survey for publication by the Defense Mapping Agency Hydrographic/Topographic Center, Washington, D.C.  
 MAP INFORMATION AS OF 1989.

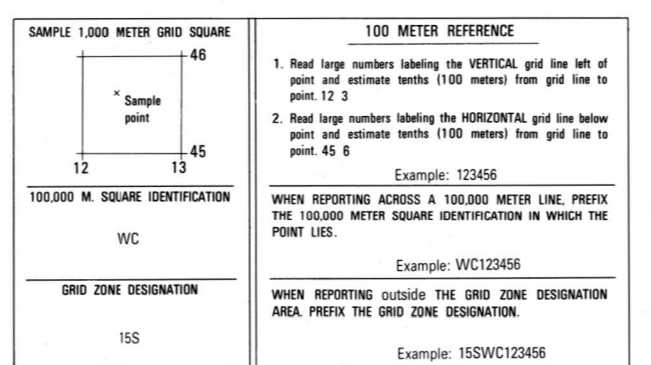


**ELEVATIONS IN METERS**

CONTOUR INTERVAL 20 METERS

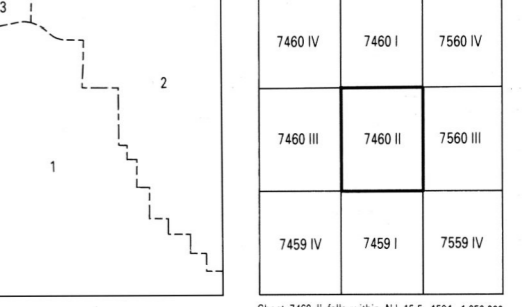
ELLIPSOID: GEODETIC REFERENCE SYSTEM 1980  
 GRID: 1,000-METER UTM ZONE 15 (BLACK NUMBERED LINES)  
 PROJECTION: 5,000-METER STATE GRID TICKS, MISSOURI (CENTRAL ZONE) TRANSVERSE MERCATOR  
 VERTICAL DATUM: NATIONAL GEODETIC DATUM OF 1929  
 HORIZONTAL DATUM: NORTH AMERICAN DATUM OF 1983  
 CONTROLS: BY USGS AND NOS/NOAA  
 PREPARED BY: U.S. GEOLOGICAL SURVEY  
 PUBLISHED BY: DMATIC 9-91

Reprinted by NIMA 1-01  
 FOR SALE BY U.S. GEOLOGICAL SURVEY  
 DENVER, COLORADO 80225, OR RESTON, VIRGINIA 22092

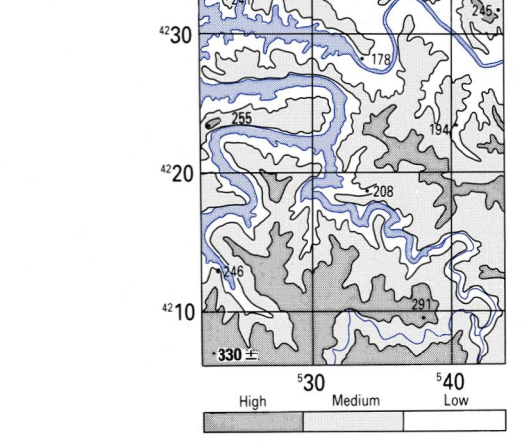


THIS MAP IS RED-LIGHT READABLE

**BOUNDARIES**      **ADJOINING SHEETS**



**ELEVATION GUIDE**



- LEGEND**
- CAUTION: ALL TELEPHONE AND ELECTRIC SERVICE LINES ARE NOT SHOWN.  
 A LANE ON THIS MAP IS CONSIDERED TO BE 2.5 METERS WIDE.  
 IN DEVELOPED AREAS ONLY THROUGH ROADS ARE CLASSIFIED.  
 THERE MAY BE PRIVATE INROADS WITHIN THE BOUNDARIES OF THE NATIONAL OR STATE RESERVATIONS SHOWN ON THIS MAP.
- ROADS: Divided highway with median strip, Primary, all weather, hard surface, Secondary, all weather, hard surface, Light duty, all weather, hard or improved surface, Fair or dry weather, unimproved surface
  - RAILROADS: Standard gauge (1.44m - 4'8 1/2"), Single track, Multiple track, Nonoperating, Railroad station: Location known, Location unknown
  - Car line
  - Railroad bridge
  - Tunnel: Highway, Railroad
  - BOUNDARIES: National, with monument, State, territory, County, parish, Civil township, town, Incorporated city, village, town, Reservation: National, State, Military
  - Power transmission line
  - Buildings
  - Structures
  - Church: School
  - Power substation
  - Windmill, Watermill
  - Well: Tank
  - Mine shaft
  - Open pit mine or quarry
  - Horizontal control station
  - Bench mark, non-monumented
  - Bench mark, monumented
  - Spot elevations in meters
  - Leaves, rims, dikes
  - Bluffs, cliffs
  - Woodland
  - Scattered trees: Scrub
  - Vineyard: Orchard, plantation
  - Intermittent lake: Dam: Earthen, Masonry
  - Stream: Perennial, Intermittent
  - Marsh: meadow
  - Small Falls, Large falls
  - Small rapids, Large rapids