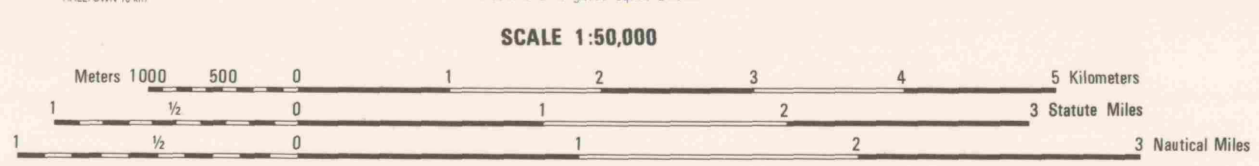


Prepared by the U.S. Geological Survey for publication by the Defense Mapping Agency Hydrographic Topographic Center, Washington, D.C.

MAP INFORMATION AS OF 1989.

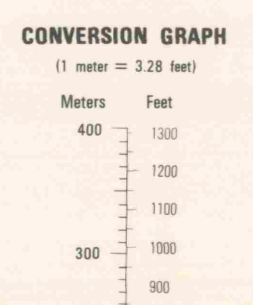


ELEVATIONS IN METERS
CONTOUR INTERVAL 10 METERS

ELLIPSOID: GRS80
GRID: 1,000 METER UTM ZONE 18 (BLACK NUMBERED LINES)
PROJECTION: TRANSVERSE MERCATOR
VERTICAL DATUM: NATIONAL GEODEIC VERTICAL DATUM OF 1929
HORIZONTAL DATUM: NORTH AMERICAN DATUM OF 1983
CONTROL: U.S. AND FOREIGN
PREPARED BY: U.S. GEOLOGICAL SURVEY
PUBLISHED BY: DMAHC 4-92

FOR SALE BY U.S. GEOLOGICAL SURVEY
DENVER, COLORADO 80225, OR RESTON, VIRGINIA 22092

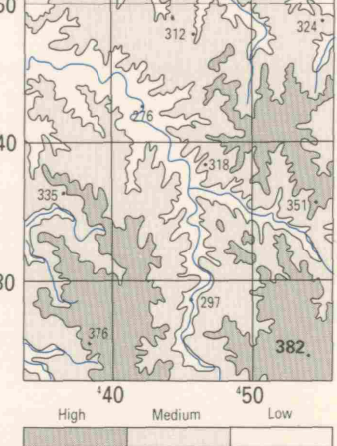
- ROADS: Divided highway with median strip, Primary, all weather, hard surface, Secondary, all weather, hard surface, Light duty, all weather, hard or improved surface, Fair or dry weather, unpaved surface, Trail, Route markers: Interstate, Federal, State, Bridge, RAILROADS (Standard gauge 1.44m - 4'8 1/2'), Single track, Multiple track, Nonoperating, Railroad station: Location known, Location unknown, Car line, Railroad bridge, Tunnel, Highway, Railroad
- BOUNDARIES: National, with monument, State, territory, County, parish, Civil township, town, Incorporated city, village, town, Reservation: National, State, Military
- Power transmission line, Buildings, Structure, Church, School, Power substation, Windmill, Watermill, Well, tank, Mine shaft, Open pit mine or quarry, Horizontal control station, Bench mark, monumented, Bench mark, non-monumented, Spot elevations in meters, Levees, rims, dikes, Bluffs, cliffs, Woodland, Scattered trees, Scrub, Vineyard, Orchard, plantation, Intermittent lake, Dam: Earth, Masonry, Stream: Perennial, Intermittent, Marsh, swamp, Small falls, Large falls, Small rapids, Large rapids



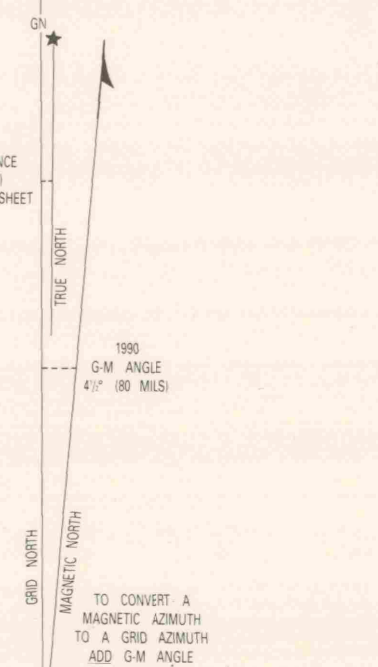
BOUNDARIES

Polk County	7259 III	7259 II	7359 III
Dade County	7258 IV	7258 I	7358 IV
Lawrence County	7258 II	7258 I	7358 II

ELEVATION GUIDE



THIS MAP IS RED-LIGHT READABLE



USGS 37093-C5-TM-050

