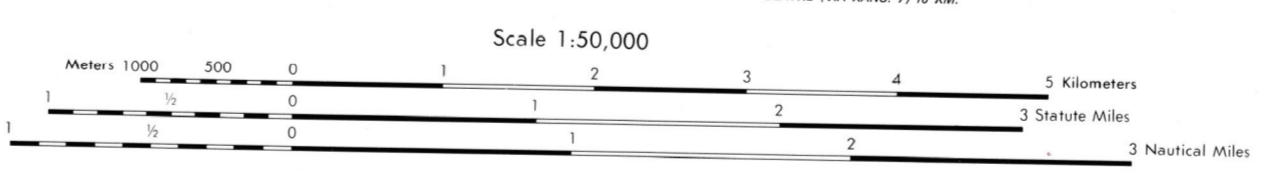


Prepared by the U.S. Geological Survey for publication by the Defense Mapping Agency Hydrographic/Topographic Center, Washington, D.C.

LEGEND

- ON THIS MAP, A LANE IS GENERALLY CONSIDERED AS BEING A MINIMUM OF 2.5 METERS (8 FEET) IN WIDTH. IN DEVELOPED AREAS, ONLY THROUGH ROADS ARE CLASSIFIED.
- ROADS**
 - Divided highway with median strip
 - Primary, all weather, hard surface
 - Secondary, all weather, hard surface
 - Light duty, all weather, hard or improved surface
 - Fair or dry weather, unimproved surface
 - Trail
 - Route markers: Interstate, Federal, State
 - Ridge, With superstructure, Without superstructure
 - RAILROADS (Standard gauge 1.44m - 4'8 1/2")
 - Single track
 - Multiple track
 - Nonoperating
 - Railroad station, Location known, Location unknown
 - Car line
 - Railroad bridge, With superstructure, Without superstructure
 - Tunnel, Highway, Railroad
 - BOUNDARIES**
 - National, with monument
 - State, territory
 - County, parish
 - City, township, town
 - Incorporated city, village, town
 - Reservation, National, State, Military
 - Other Features**
 - Power transmission line
 - Buildings
 - Structures
 - Church, School
 - Power substation
 - Windmill, Watermill
 - Well, Tank
 - Mine shaft
 - Open pit mine or quarry
 - Horizontal control station
 - Bench mark, monument
 - Bench mark, non-monumented
 - Spot elevation in meters
 - Leaves, rim, dikes
 - Bluffs, cliffs
 - Woodland
 - Scattered trees, Scrub
 - Vegetation, Orchard, plantation
 - Stream, Perennial, Intermittent
 - Marsh, swamp
 - Small rapids, Small falls
 - Large rapids, Large falls



ELEVATIONS IN METERS

CONTOUR INTERVAL 10 METERS
SUPPLEMENTARY CONTOURS 5 METERS

SPHEROID CLARKE 1866
GRID 1,000 METER UTM ZONE 18 (BLACK NUMBERS) (METERS)
 10,000 FOOT STATE GRID TICKS, KANSAS, NORTH ZONE
PROJECTION UNIVERSAL TRANSVERSE MERCATOR
VERTICAL DATUM NATIONAL GEODETIC VERTICAL DATUM OF 1929
HORIZONTAL DATUM 1927 NORTH AMERICAN DATUM
CONTROL BY USGS AND NOS/NGAA
PREPARED BY U.S. GEOLOGICAL SURVEY
 Reprinted by NIMA 07-02

FOR SALE BY U.S. GEOLOGICAL SURVEY, DENVER, COLORADO 80225
 OR RESTON, VIRGINIA 22092

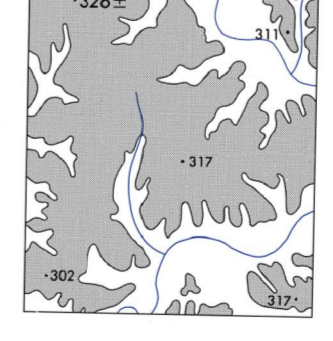
100 METER REFERENCE

- Read large numbers labeling the VERTICAL grid line left of point and estimate from 100 meters.
- Read large numbers labeling the HORIZONTAL grid line below point and estimate from 100 meters. From grid line to point, 42.5 meters. Example: 123456

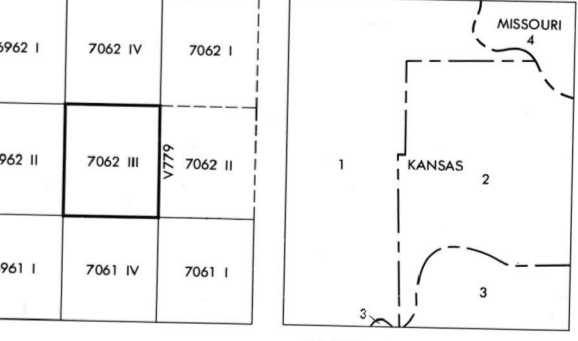
WHEN REPORTING OUTSIDE THE 100,000 METER SQUARE AREA IN WHICH THE POINT LIES, PREFIX THE 100,000 METER SQUARE IDENTIFICATION.
 Example: U123456

WHEN REPORTING OUTSIDE THE GRID ZONE DESIGNATION AREA IN WHICH THE POINT LIES, PREFIX THE GRID ZONE DESIGNATION.
 Example: 15S U123456

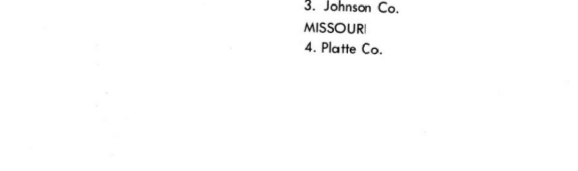
ELEVATION GUIDE



ADJOINING SHEETS



BOUNDARIES



THIS MAP IS RED-LIGHT READABLE

USERS SHOULD REFER TO CORRECTIONS, ADDITIONS, AND COMMENTS TO THE NIMA OPERATIONAL HELP DESK: 1-800-486-8868 COMMERCIAL 1-800-486-8868 OR WRITE TO: DIRECTOR, NATIONAL IMAGERY AND MAPPING AGENCY, ATTN: ES, MAIL STOP 1-86, 4600 SANGAMON ROAD, BETHESDA, MD 20818-5002.