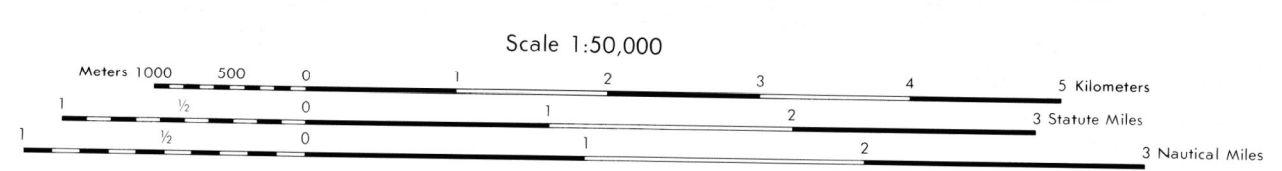


Prepared by the U.S. Geological Survey for publication by the Defense Mapping Agency Hydrographic/Topographic Center, Washington, D.C.

LEGEND

- ON THIS MAP, A LANE IS GENERALLY CONSIDERED AS BEING A MINIMUM OF 2.5 METERS (8 FEET) IN WIDTH. IN DEVELOPED AREAS, ONLY THROUGH ROADS ARE CLASSIFIED.
- MAP INFORMATION AS OF 1975
- ROADS**
 - Divided highway with median strip
 - Primary, all weather, hard surface
 - Secondary, all weather, hard surface
 - Light duty, all weather, hard or improved surface
 - Fair or dry weather, unimproved surface
 - Trail
 - Route markers Interstate, Federal, State
 - Bridge, With superstructure, Without superstructure
 - RAILROADS (Standard gauge 1.44m - 4'8 1/2")
 - Single track
 - Multiple track
 - Nonoperating
 - Railroad station, location known, location unknown
 - Car line
 - Railroad bridge, With superstructure, Without superstructure
 - Tunnel, Highway, Railroad
 - BOUNDARIES**
 - National, with monument
 - State, Territory
 - County, parish
 - Civil township, town
 - Incorporated city, village, town
 - Reservation, National, State, Military
 - Buildings**
 - Structures
 - Church, School
 - Power substation
 - Windmill, Watermill
 - Well, Tank
 - Mine shaft
 - Open pit mine or quarry
 - Horizontal control station
 - Bench mark, monument
 - Bench mark, non-monumented
 - Spot elevations in meters
 - Levee, rim, dike
 - Bluffs, cliffs
 - Woodland**
 - Scattered trees, Scrub
 - Vineyard, Orchard, plantation
 - Intersected lake, Dam, Earthen, Masonry
 - Stream, Perennial, Intermittent
 - Swamp, marsh
 - Small rapids, Small falls
 - Large rapids, Large falls



ELEVATIONS IN METERS

CONTOUR INTERVAL 10 METERS

REPRINTED BY NIMA 8/02

SPHEROID: CLARKE 1866
 GRID: 1000 METER UTM ZONE 15 BLACK NUMBERED LINES
 10,000 FOOT STATE GRID TICKS, KANSAS, NORTH ZONE
 AND MISSOURI WEST ZONE
 PROJECTION: UNIVERSAL TRANSVERSE MERCATOR
 VERTICAL DATUM: NATIONAL GEODETIC VERTICAL DATUM OF 1929
 HORIZONTAL DATUM: 1927 NORTH AMERICAN DATUM
 CONTROL: USGS AND NOS/NOAA
 PREPARED BY: U.S. GEOLOGICAL SURVEY

FOR SALE BY U. S. GEOLOGICAL SURVEY, DENVER, COLORADO 80225
 OR RESTON, VIRGINIA 22092

100 METER REFERENCE

1. Read large numbers labeling the VERTICAL grid line (left of point and estimate tenths (100 meters))

2. Read large numbers labeling the HORIZONTAL grid line below point and estimate tenths (100 meters) from grid line to point. 45.0

Example: 12345.6

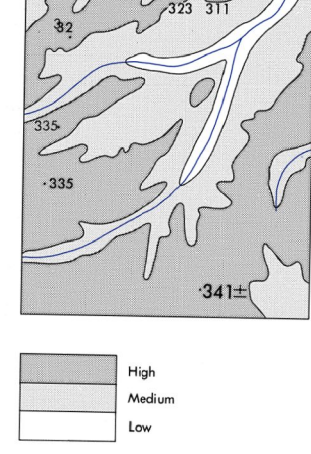
WHEN REPORTING OUTSIDE THE 100,000 METER SQUARE AREA IN WHICH THE POINT LIES, PREFIX THE 100,000 METER SQUARE IDENTIFICATION.

Example: UPI23456

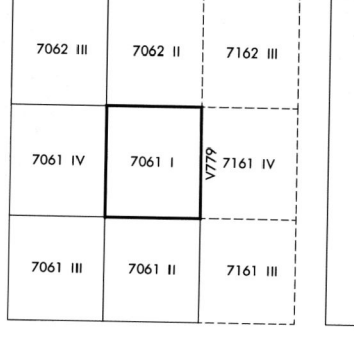
WHEN REPORTING OUTSIDE THE GRID ZONE DESIGNATION AREA IN WHICH THE POINT LIES, PREFIX THE GRID ZONE DESIGNATION.

Example: 15SP123456

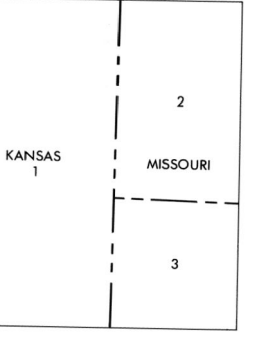
ELEVATION GUIDE



ADJOINING SHEETS



BOUNDARIES



THIS MAP IS RED-LIGHT READABLE

USERS SHOULD REFER CORRECTIONS, ADDITIONS, AND COMMENTS TO THE NGA OPERATIONAL HELP DESK: 1-800-455-0099, COMMERCIAL 316-260-4800, 6250-4800, OR WRITE TO: DIRECTOR, NATIONAL GEOSPATIAL INTELLIGENCE AGENCY, ATTN: ES, MAIL STOP 1-88, 4800 SANGAMORE ROAD, BETHESDA, MD 20818-5003.