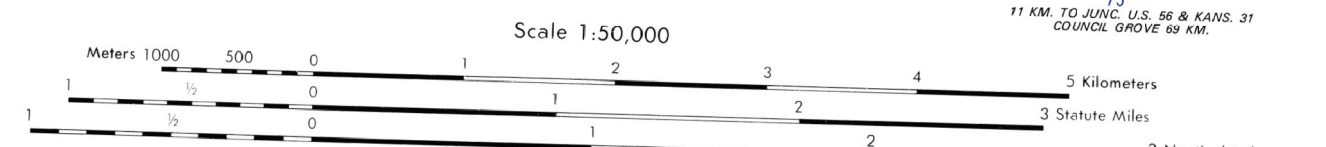


Prepared by the U.S. Geological Survey for publication by the Defense Mapping Agency Hydrographic/Topographic Center, Washington, D.C.

LEGEND

- ON THIS MAP, A LANE IS GENERALLY CONSIDERED AS BEING A MINIMUM OF 2.5 METERS (8 FEET) IN WIDTH. IN DEVELOPED AREAS, ONLY THROUGH ROADS ARE CLASSIFIED.
- ROADS**
 - Dotted highway with median strip
 - Primary, all weather, hard surface
 - Secondary, all weather, hard surface
 - Light duty, all weather, hard or improved surface
 - Fair or dry weather, unimproved surface
 - Trail
 - Route markers: Interstate, Federal, State
 - Bridge with superstructure. Without superstructure
 - RAILROADS (Standard gauge 1.44m (4'8 1/2"))
 - Single track
 - Multiple track
 - Nonoperating
 - Railroad station. Location known. Location unknown
 - Car line
 - Railroad bridge. With superstructure. Without superstructure
 - Tunnel. Highway. Railroad
 - BOUNDARIES**
 - National, with monument
 - State, territory
 - County, parish
 - Civil township, town
 - Incorporated city, village, town
 - Reservation: National, State, Military
 - Buildings**
 - Power transmission line
 - Structures
 - Church, school
 - Power substation
 - Windmill, watermill
 - Well, tank
 - Mine shaft
 - Open pit mine or quarry
 - Horizontal control station
 - Bench mark, monument
 - Bench mark, non-monumented
 - Spot elevations in meters
 - Level, cone, disk
 - Bluffs, cliffs
 - Woodland
 - Scattered trees, scrub
 - Vineyard, Orchard, plantation
 - Intermittent lake, dam, earth, masonry
 - Stream, perennial, intermittent
 - Marsh, swamp
 - Small rapids, small falls
 - Large rapids, large falls



ELEVATIONS IN METERS

CONTOUR INTERVAL 10 METERS
REPRINTED BY NIMA 9-1998

- SPHEROID: 1,000 METER UTM ZONE 18 (BLACK NUMBERS) BRASS
- GRID: 1,000 METER UTM ZONE 14 (BLUE NUMBERS) TICS
- 1,000 METER UTM ZONE 14 (BLUE NUMBERS) TICS
- 10,000 FOOT STATE GRID TICS: KANSAS, NORTH AND SOUTH ZONES
- PROJECTION: UNIVERSAL TRANSVERSE MERCATOR
- VERTICAL DATUM: NATIONAL GEODETIC VERTICAL DATUM OF 1957
- HORIZONTAL DATUM: 1927 NORTH AMERICAN DATUM
- UNIT OF MEASURE: METERS
- CONTROL BY: U.S. GEOLOGICAL SURVEY

FOR SALE BY U.S. GEOLOGICAL SURVEY, DENVER, COLORADO 80223
OR RESTON, VIRGINIA 22092

100 METER REFERENCE

1. Read large numbers labeling the VERTICAL grid line left of point and estimate tenths (100 meters) from grid line to point. (1, 2, 3)

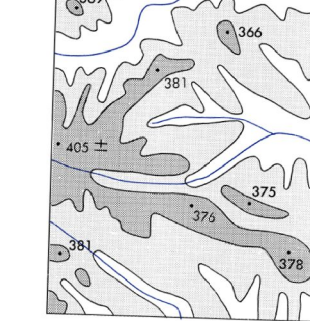
2. Read large numbers labeling the HORIZONTAL grid line below point and estimate tenths (100 meters) from grid line to point. (4, 5)

Example: 123456

WHEN REPORTING OUTSIDE THE 100,000 METER SQUARE AREA IN WHICH THE POINT LIES, PREFIX THE 100,000 METER SQUARE IDENTIFICATION. Example: TP123456

WHEN REPORTING OUTSIDE THE GRID ZONE DESIGNATION AREA, IN WHICH THE POINT LIES, PREFIX THE GRID ZONE DESIGNATION. Example: 15STP123456

ELEVATION GUIDE



ADJOINING SHEETS

6862 II	6862 III	6862 IV
6861 I	6861 II	6861 III
6861 IV	6861 V	6861 VI

BOUNDARIES

