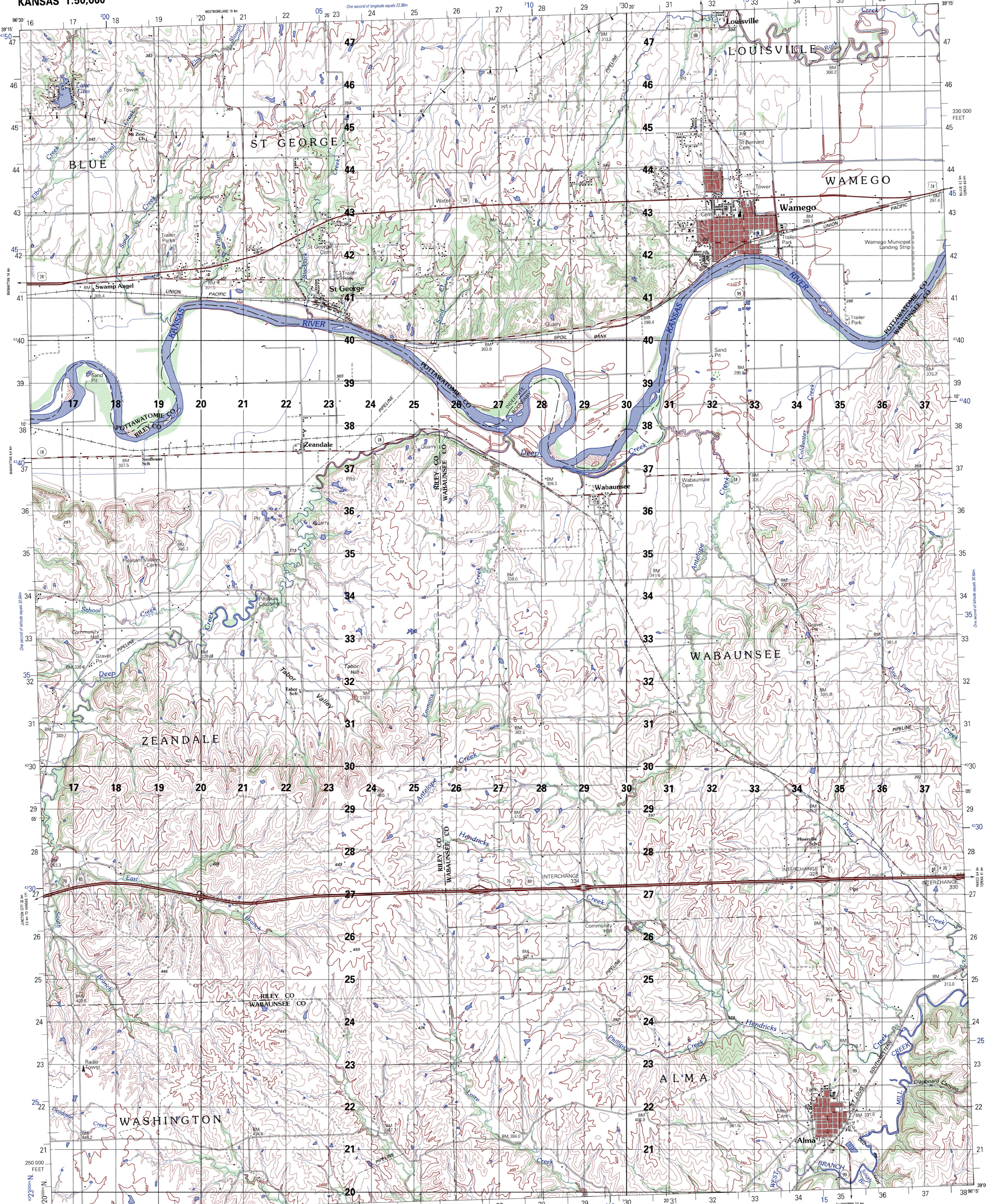


KANSAS 1:50,000

WAMEGO

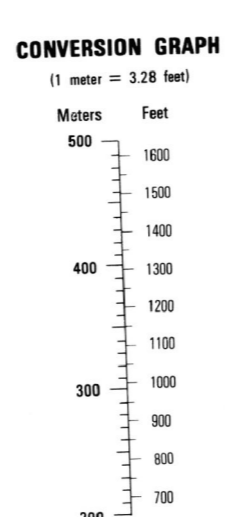


Prepared by the U. S. Geological Survey for publication by the Defense Mapping Agency
 MAP INFORMATION AS OF 1981.

LEGEND
 CAUTION: ALL TELEPHONE AND ELECTRIC SERVICE LINES ARE NOT SHOWN.
 A LANE ON THIS MAP IS CONSIDERED TO BE 25 METERS WIDE.
 IN DEVELOPED AREAS ONLY THROUGH ROADS ARE CLASSIFIED.

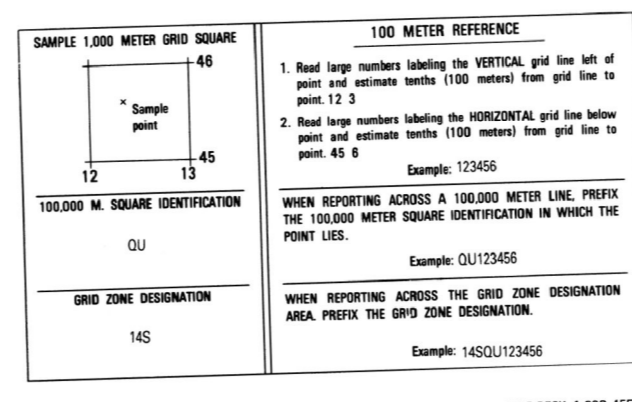
- Power transmission line
- Buildings
- Structures
- Church, School
- Power substation
- Windmill, Watermill
- Well, Tank
- Open pit mine or quarry
- Horizontal control station
- Bench mark, monumented
- Bench mark, non-monumented
- Spot elevations in meters
- Contours, five, three, two
- Shrubs, cliffs
- Woodland
- Vineyard, Orchard, plantation
- Intermittent lake, Dam, Embank, Masonry
- Stream, Perennial, Intermittent
- Marsh, swamp
- Small falls, Large falls
- Small rapids, Large rapids

THIS MAP IS RED-LIGHT READABLE

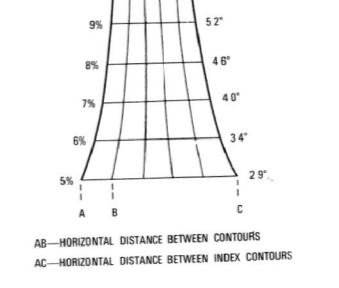
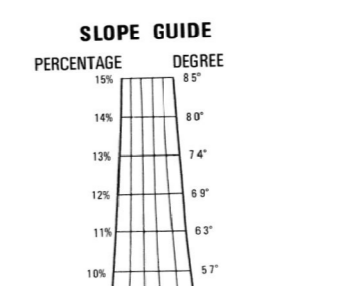


ELEVATIONS IN METERS
 CONTOUR INTERVAL 10 METERS

SPHEROID: CLARKE 1866
 GRID: 1,000-METER UTM ZONE 14 (BLACK NUMBERED LINES)
 PROJECTION: 1,000-METER UTM ZONE 14 (BLUE NUMBERED TICKS)
 HORIZONTAL DATUM: 1927 NORTH AMERICAN DATUM
 VERTICAL DATUM: 1927 NORTH AMERICAN DATUM
 CONTROL BY: U. S. GEOLOGICAL SURVEY
 PREPARED BY: DMA
 PUBLISHED BY: DMA
 Reprinted by NIMA 12-98
 FOR SALE BY U. S. GEOLOGICAL SURVEY, DENVER, COLORADO 80225
 OR RESTON, VIRGINIA 22092



USERS SHOULD REFER TO THE MAIN CUSTODY HELP DESK 1 800 455 0889 COMMERCIAL 1-202-261-2226 FOR ADDITIONAL INFORMATION. CONTACT THE NATIONAL IMAGERY AND MAPPING AGENCY 4800 SANGAMORE ROAD BETHESDA MD 20815-5003



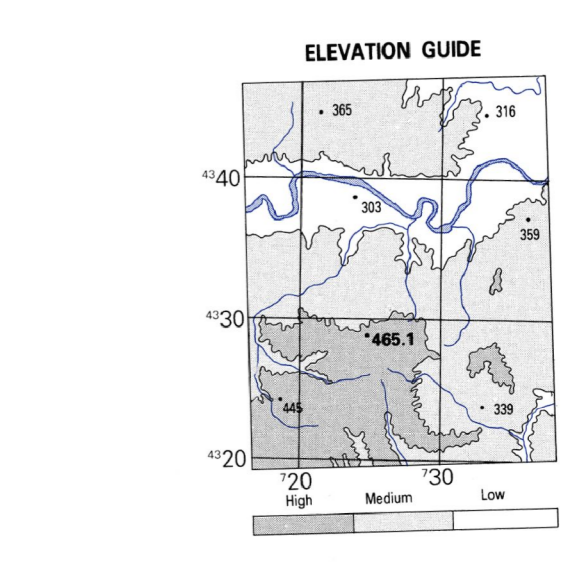
BOUNDARIES

Pottawatomie County
 Riley County
 Wabaunsee County

ADJOINING SHEETS

6862 I	6762 IV	6762 I
6862 II	6762 III	6762 II
6861 I	6761 IV	6761 I

Sheet 6762 III falls within N 14 S, 15E 1, 136,000



NSN 764-301-4054826 ED. NO. 001
 NIMA Ref No. V778X67623