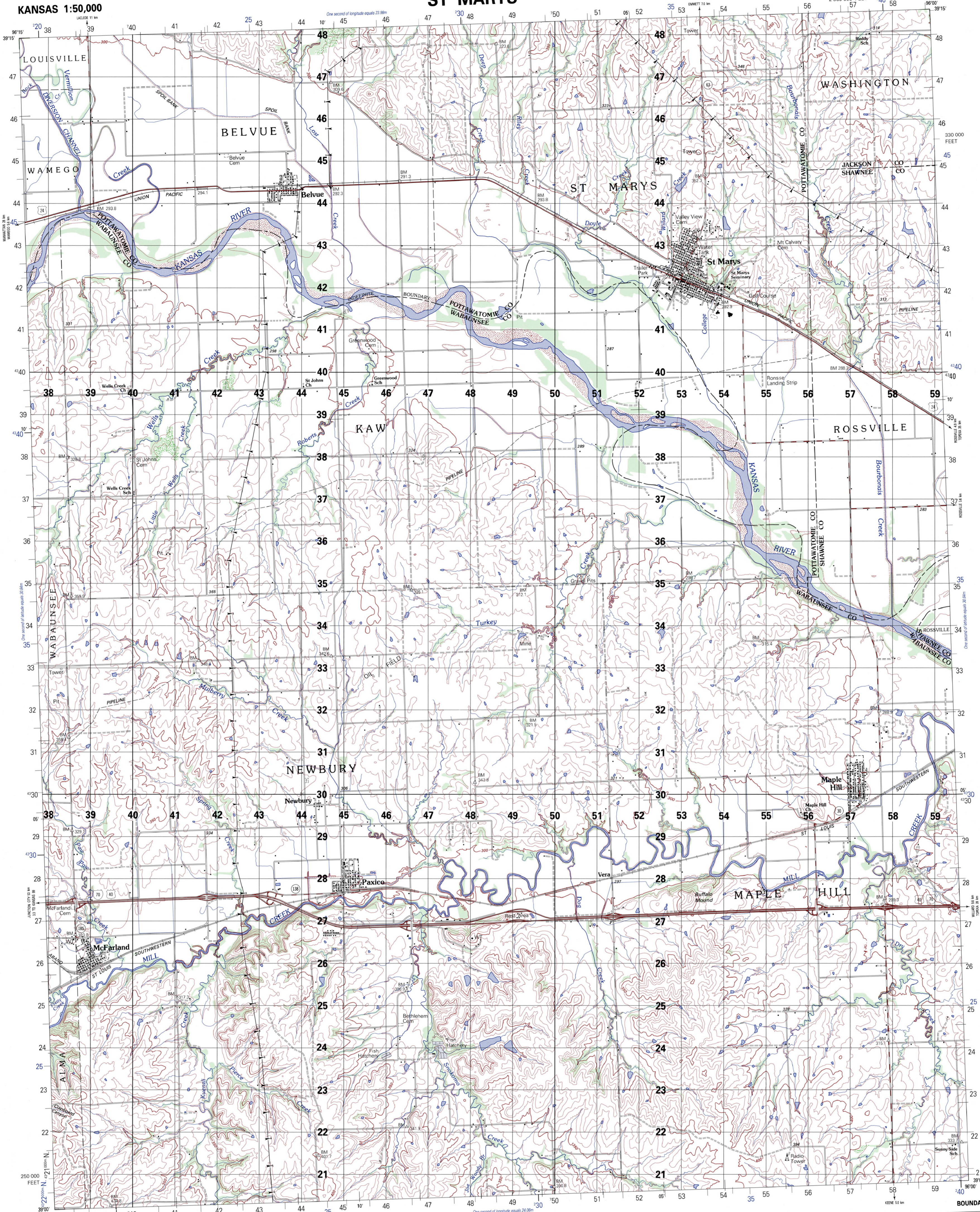


KANSAS 1:50,000

ST MARYS



Prepared by the U. S. Geological Survey for publication by the Defense Mapping Agency Hydrographic/Topographic Center, Washington, D. C.
 MAP INFORMATION AS OF 1981.

LEGEND

CAUTION: ALL TELEPHONE AND ELECTRIC SERVICE LINES ARE NOT SHOWN.
 A LINE ON THIS MAP IS CONSIDERED TO BE 2.5 METERS WIDE.
 UNDEVELOPED AREAS ONLY THROUGH ROADS ARE CLASSIFIED.

- | | |
|--|--|
| <ul style="list-style-type: none"> ROADS Divided highway with median strip Primary, all weather, hard surface Secondary, all weather, hard surface Light duty, all weather, hard or improved surface Fair or dry weather, unimproved surface Trail Route markers: Interstate, Federal, State Car line Railroads (Standard gauge 1.44m - 4'8 1/2") Single track Multiple track Nonoperating Railroad station: Location known; Location unknown Car line Railroad bridge Tunnel: Highway, Railroad BOUNDARIES National, with monument State, territory County, parish Civil township lines Incorporated city, village, town Reservation: National, State, Military | <ul style="list-style-type: none"> Power transmission line Buildings Structures Church: School Power substation Windmill; Watermill Well; Tank Mine shaft Open pit mine or quarry Horizontal control station Bench mark: monument Bench mark: non-monumental Spot elevations in meters Leaves, rims, dikes Bluffs, cliffs Woodland Scattered trees: Scrub Viewshed: Orchard, plantation Intermittent lake: Dam; Earth; Masonry Stream: Perennial; Intermittent Marsh, swamp Small falls; Large falls Small rapids; Large rapids |
|--|--|

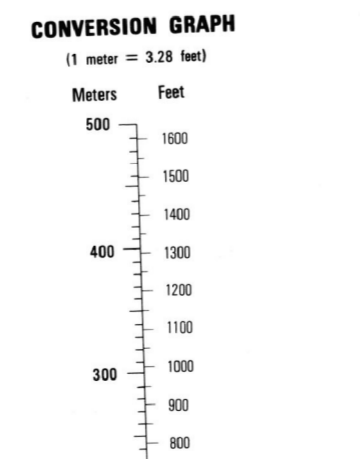
SCALE 1:50,000
 METERS 1000 500 0 500 1000 1500 2000 2500 3000 3500 4000 4500 5000
 KILOMETERS 0 1 2 3 4 5
 NAUTICAL MILES 0 1 2 3

ELEVATIONS IN METERS

CONTOUR INTERVAL 10 METERS

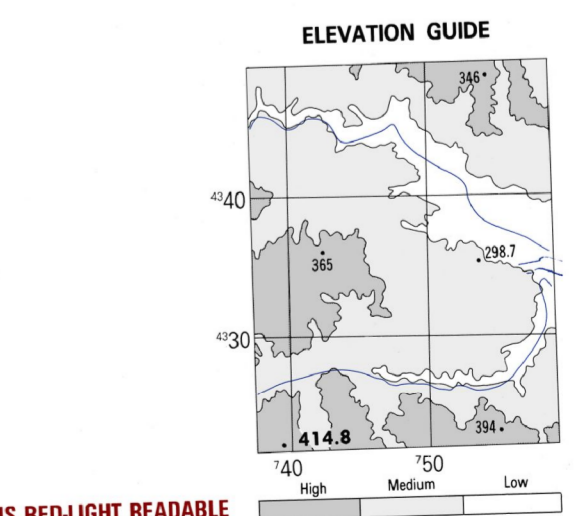
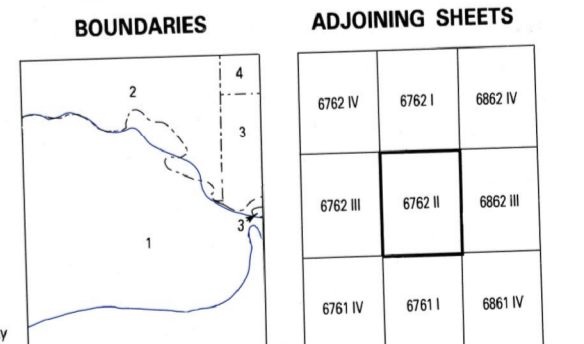
SPHEROID: CLARKE 1866
 GRID: 1,000-METER UTM ZONE 14 (BLACK NUMBERED LINES)
 1,000-METER UTM ZONE 15 (BLUE NUMBERED LINES)
 PROJECTION: TRANSVERSE MERCATOR
 HORIZONTAL DATUM: NATIONAL GEODETIC VERTICAL DATUM OF 1929
 VERTICAL DATUM: 1929 NORTH AMERICAN DATUM
 CONTROL BY: U.S. AND NATIONAL
 PREPARED BY: U.S. GEOLOGICAL SURVEY
 REPRINTED BY: NMA 3-00

FOR SALE BY U.S. GEOLOGICAL SURVEY, DENVER, COLORADO 80225
 OR RESTON, VIRGINIA 22092



100-METER REFERENCE
 1. Read large numbers labeling the VERTICAL grid line left of point and estimate tenths (100 meters) from grid line to point 12.3
 2. Read large numbers labeling the HORIZONTAL grid line below point and estimate tenths (100 meters) from grid line to point 45.5
 Example: 123456
 WHEN REPORTING ADDRESS A 100-METER LINE, PREFIX THE 100-METER REFERENCE IDENTIFICATION IN WHICH THE POINT LIES. Example: QU123456
 WHEN REPORTING ADDRESS THE GRID ZONE DESIGNATION AREA, PREFIX THE GRID ZONE DESIGNATION. Example: 14SQ123456

USERS SHOULD REFER TO CORRECTIONS, ADDITIONS, AND COMMENTS TO THE NATIONAL OPERATIONAL HELP DESK: 1-800-485-8888; COMMERCIAL: 314-226-4844; OR WRITE TO DIRECTOR, NATIONAL GEOSPATIAL-INTelligence AGENCY, ATTN: ES, MAIL STOP L-88, 4800 SAN ANGELO ROAD, BETHESDA, MD 20816-5002.



USGS 39096-A1-TM-050
 NSN 7643014054825
 NGA Ref No: V778X67622