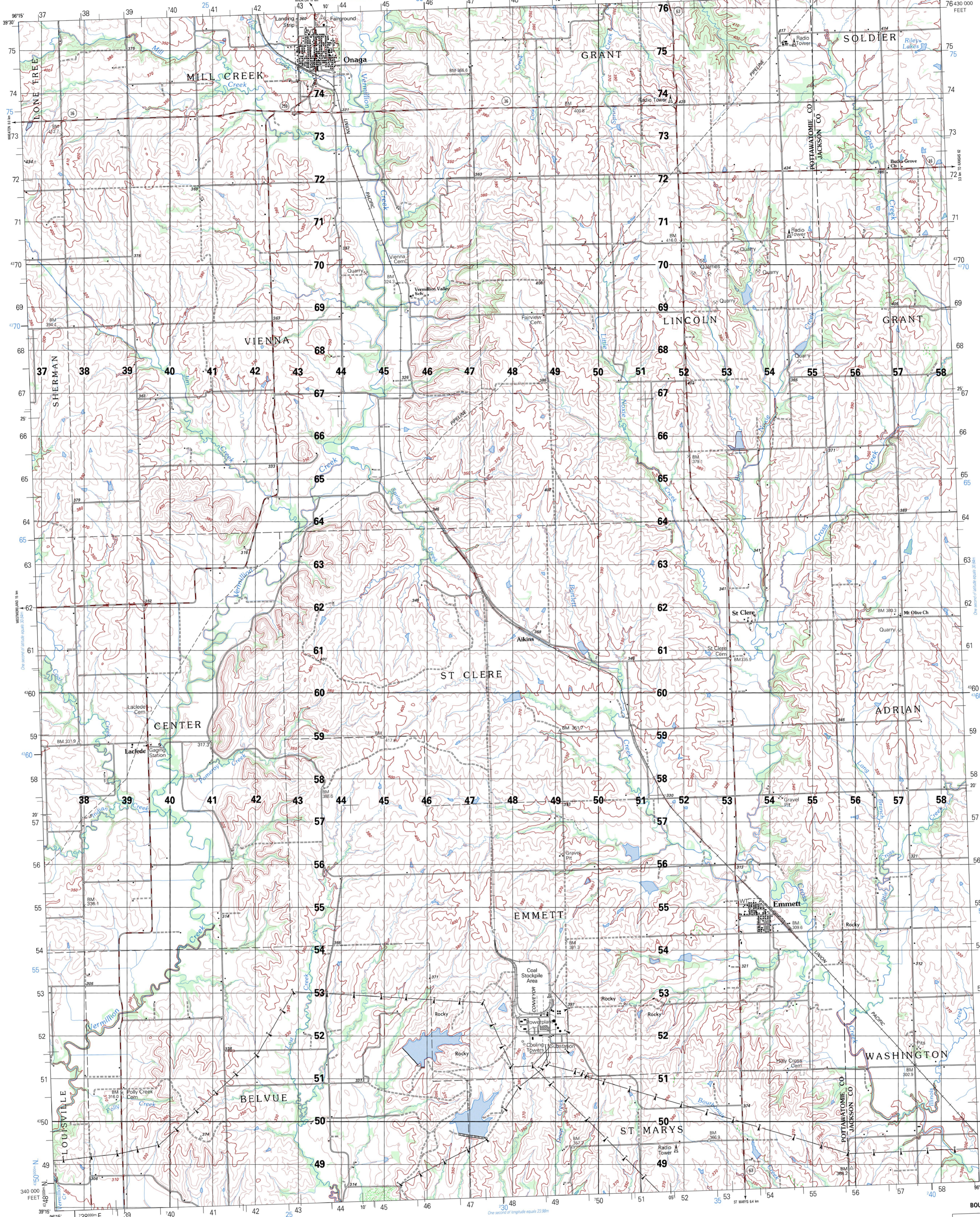
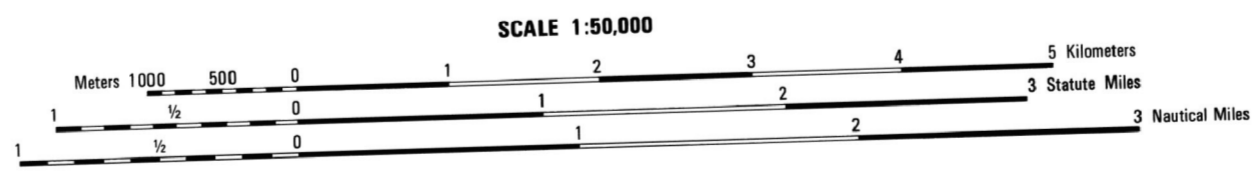


ONAGA

KANSAS 1:50,000



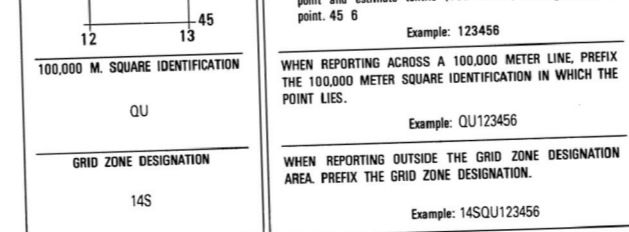
Prepared by the U. S. Geological Survey for publication by the Defense Mapping Agency Hydrographic/Topographic Center, Washington, D. C.
 MAP INFORMATION AS OF 1981.



SCALE 1:50,000
 ELEVATIONS IN METERS
 CONTOUR INTERVAL 10 METERS

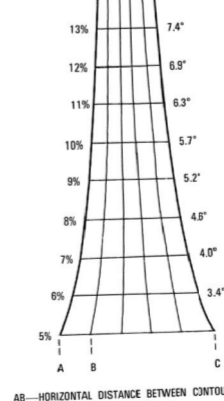
SPHEROID CLARKE 1866
 GRID 1,000-METER UTM ZONE 14 (BLACK NUMBERED LINES)
 GRID 100-METER UTM ZONE 14 (BLUE UNNUMBERED TICKS)
 PROJECTION TRANSVERSE MERCATOR
 VERTICAL DATUM NATIONAL GEODETIC VERTICAL DATUM OF 1929
 HORIZONTAL DATUM 1983 NORTH AMERICAN DATUM
 CONTROLS BY U. S. GEOLOGICAL SURVEY
 PREPARED BY DAHATC 5-86
 PUBLISHED BY
 Reprinted by NGA 06-08

FOR SALE BY U. S. GEOLOGICAL SURVEY, DENVER, COLORADO 80225
 OR RESTON, VIRGINIA 22092



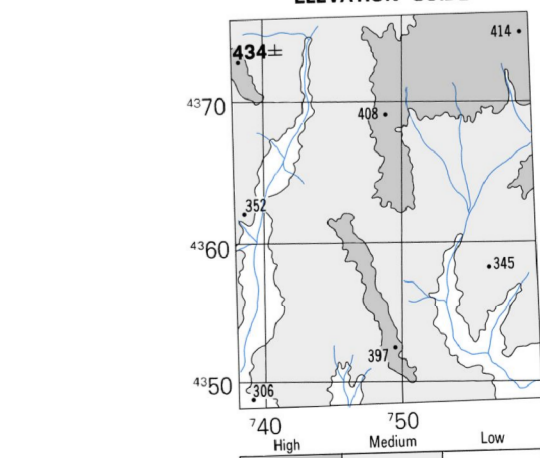
USERS SHOULD REFER TO THE NGA ENTERPRISE SERVICE DESK: 1-800-456-6868; COMMERCIAL: 202-231-8811; DOWNGRADING UNCLASSIFIED EMAIL: ENTERPRISESERVICE@GSA.GOV; SUPPORT: SUPPORT@GSA.GOV; SITEMAIL: SITEMAIL@GSA.GOV; OR WRITE TO: DIRECTOR, NATIONAL GEOSPATIAL INTELLIGENCE AGENCY, ATTN: ESC, MAIL STOP 6-240, 4800 SANGAMORE ROAD, BETHESDA, MD 20818-3000

SLOPE GUIDE
 PERCENTAGE DEGREE

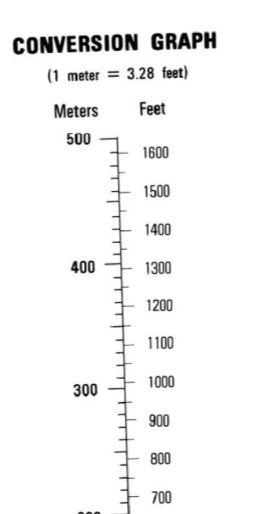


THIS MAP IS RED-LIGHT READABLE

BOUNDARIES		ADJOINING SHEETS	
1	2	6763 III	6763 II
3	4	6762 IV	6762 I
5	6	6762 III	6762 II



- LEGEND**
- CAUTION: ALL TELEPHONE AND ELECTRIC SERVICE LINES ARE NOT SHOWN.
 A LANE ON THIS MAP IS CONSIDERED TO BE 2.5 METERS WIDE.
 IN DEVELOPED AREAS ONLY THROUGH ROADS ARE CLASSIFIED.
- Roads: Divided highway with median strip, Primary, all weather, hard surface, Light city, all weather, hard surface, Fair or dry weather, unpaved surface, Trail, Route markers: Interstate, Federal, State, Incorporated city, village, town, Bridge
 - Railroads: Standard gauge (1.44m - 4'8 1/2"), Multiple track, Nonstop, Railroad station: Location known, Location unknown, Car line, Tunnel: Highway, Railroad
 - Boundaries: National, with monument, State, territory, County, parish, Civil township, town, Incorporated city, village, town, Reservation: National, State, Military
 - Power transmission line, Buildings, Structures, Church, School, Power substation, Windmill, Watermill, Well, Tank, Mine shaft, Open pit mine or quarry, Horizontal control station, Bench mark, monumented, Bench mark, non-monumented, Spot elevations in meters, Levees, rims, dikes, Bluffs, cliffs, Woodland, Scattered trees, Scrub, Vineyard, Orchard, plantation, Interment: Mass, Open, Earthless, Masonry, Swamp, Perennial, Intermittent, Marsh, sedge, Small falls, Large falls, Small rapids, Large rapids



USGS 39096-C1-TM-050
 NSN 7643014054824
 NGA Ref No: V778X67621
 ED 1001