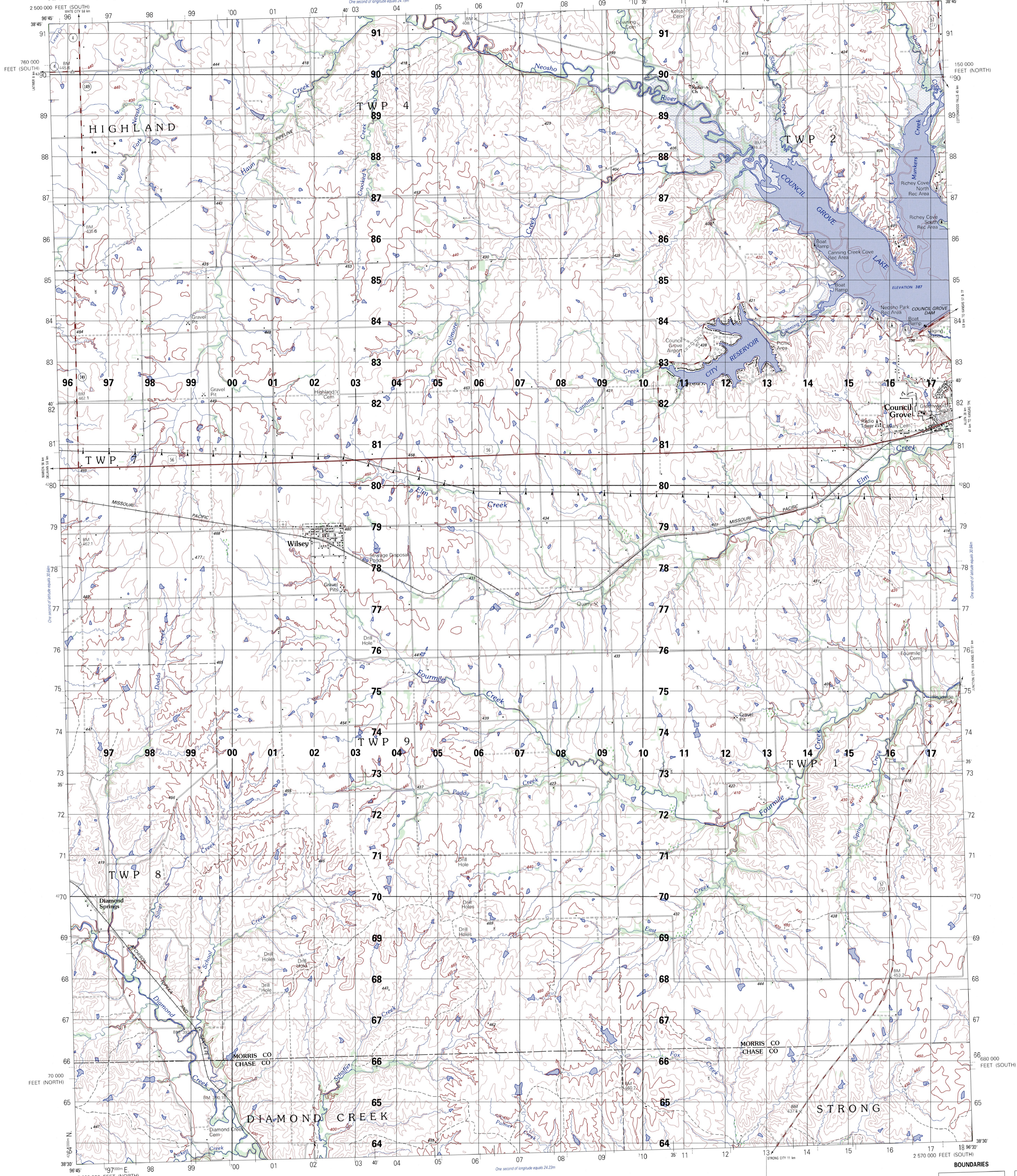


KANSAS 1:50,000

WILSEY

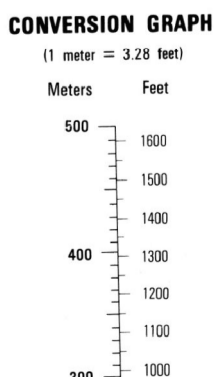


Prepared by the U. S. Geological Survey for publication by the Defense Mapping Agency Hydrographic Topographic Center, Washington, D. C. MAP INFORMATION AS OF 1981.

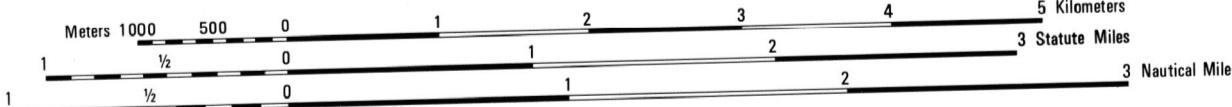
LEGEND

CAUTION: ALL TELEPHONE AND ELECTRIC SERVICE LINES ARE NOT SHOWN. A LANE ON THIS MAP IS CONSIDERED TO BE 2.5 METERS WIDE.

- ROADS**
  - Dual highway with median strip
  - Dual, all weather, hard surface
  - Primary, all weather, hard surface
  - Secondary, all weather, hard surface
  - Light duty, all weather, hard or improved surface
  - Fair or dry weather, unimproved surface
  - Trail
  - Route markers: Interstate, Federal, State
  - Bridge
  - RAILROADS (Standard gauge 1.44m - 4'8 1/2")
  - Single track
  - Multiple track
  - Nonoperating
  - Railroad station: Location known; Location unknown
  - Car line
  - Railroad bridge
  - Tunnel: Highway, Railroad
- BOUNDARIES**
  - National, with monument
  - State, territory
  - County, parish
  - Civil township, town
  - Incorporated city, village, town
  - Reservation: National, State, Military
- Power transmission line**
- Buildings**
- Structures**
- Church, School**
- Power substation**
- Windmill, Watermill**
- Well, Tank**
- Mine shaft**
- Open pit mine or quarry**
- Horizontal control station**
- Bench mark, monument**
- Bench mark, non-monumented**
- Spot elevations in meters**
- Levels, ties, dikes**
- Shoals, dunes**
- Woodlands**
- Scattered trees, Scrub**
- Wooded, Orchard, plantation**
- Intermittent lake, Open, Earthed, Masonry**
- Stream: Perennial, Intermittent**
- Marsh, swamp**
- Small falls, Large falls**
- Small rapids, Large rapids**



SCALE 1:50,000



ELEVATIONS IN METERS

CONTOUR INTERVAL 10 METERS

SPHEROID: CLARE 1866  
PROJECTION: TRANSVERSE MERCATOR  
VERTICAL DATUM: 1929 NORTH AMERICAN DATUM  
HORIZONTAL DATUM: NATIONAL GEODETIC VERTICAL AND NAD83A CONTROL  
PREPARED BY: U. S. GEOLOGICAL SURVEY  
Reprinted by NSA 01-07

FOR SALE BY U. S. GEOLOGICAL SURVEY, DENVER, COLORADO 80225 OR RESTON, VIRGINIA 22092

**100 METER REFERENCE**

1. Read large numbers labeling the VERTICAL grid line to the point and estimate tenths (100 meters) from grid line to point. 12 3

2. Read large numbers labeling the HORIZONTAL grid line below point and estimate tenths (100 meters) from grid line to point. 45 6

Example: 123456

WHEN REPORTING ACROSS A 100,000 METER LINE, PREFIX THE 100,000 METER SQUARE IDENTIFICATION IN WHICH THE POINT LIES.

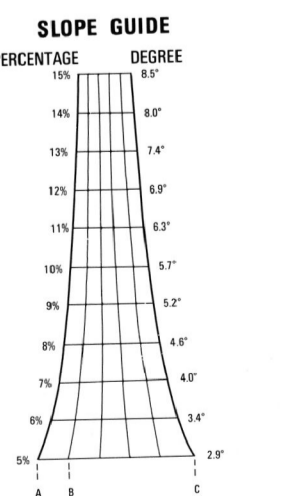
Example: PT123456

WHEN REPORTING OUTSIDE THE GRID ZONE DESIGNATION AREA, PREFIX THE GRID ZONE DESIGNATION.

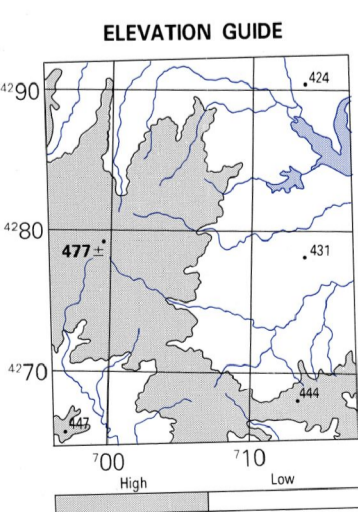
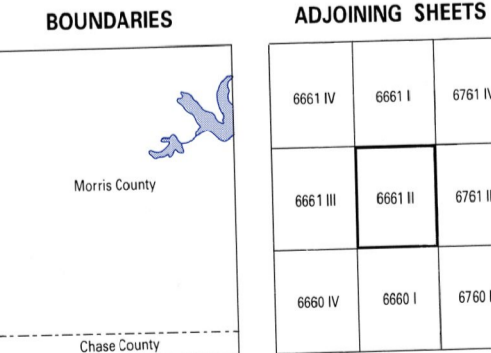
Example: 14SPT123456

USERS SHOULD REFER TO CORRECTIONS, ADDITIONS, AND COMMENTS TO THE NGA OPERATIONAL HELP DESK: 1-800-455-8899; COMMERCIAL 314-263-4884; DSN 893-4884; OR WRITE TO: DIRECTOR, NATIONAL GEOSPATIAL-INTelligence AGENCY, ATTN: ES, MAIL STOP 1-96, 4600 SAIGONMORE ROAD, BETHESDA, MD 20815-5005.

THIS MAP IS RED-LIGHT READABLE



USGS 38096-E5-TM-050



NSN 7643014043157 NGA Ref No. V778X66612