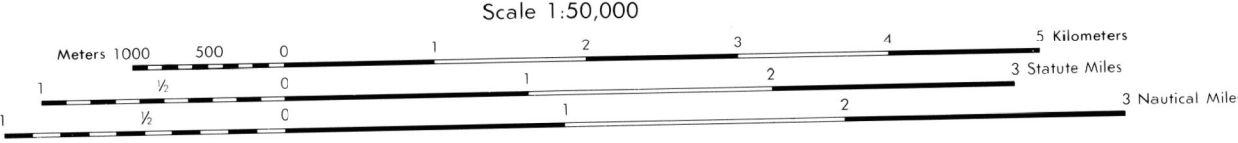


Prepared by the U.S. Geological Survey for publication by the Defense Mapping Agency Hydrographic/Topographic Center, Washington, D.C.

LEGEND

- MAP INFORMATION AS OF 1974
- ON THIS MAP, A LANE IS GENERALLY CONSIDERED AS BEING A MINIMUM OF 2.5 METERS (8 FEET) IN WIDTH. IN DEVELOPED AREAS, ONLY THROUGH ROADS ARE CLASSIFIED.
- ROADS**
    - Divided highway with median strip
    - Primary, all weather, hard surface
    - Secondary, all weather, hard surface
    - Light duty, all weather, hard or improved surface
    - Fair or dry weather, unimproved surface
    - Trail
    - Route markers: Interstate, Federal, State
    - Open pit mine or quarry
    - Bridge: With superstructure, Without superstructure
    - RAILROADS (Standard gauge 1.44m - 4'8 1/2")
    - Single track
    - Multiple track
    - Nonoperating
    - Railroad station, location known, location unknown
    - Car line
    - Railroad bridge: With superstructure, Without superstructure
    - Tunnel, Highway, Railroad
  - BOUNDARIES**
    - National, with monument
    - State, territory
    - County, parish
    - Civil township, town
    - Incorporated city, village, town
    - Reservation, National, State, Military
  - Other Features**
    - Power transmission line
    - Building
    - Structure
    - Church, School
    - Power substation
    - Windmill, Watermill
    - Well, Tank
    - Mine shaft
    - Open pit mine or quarry
    - Horizontal control station
    - Bench mark, nonmonumented
    - Bench mark, monumented
    - Spot elevations in meters
    - Leaves, rims, dikes
    - Bluffs, cliffs
    - Woodland
    - Scattered trees, scrub
    - Vineyard, Orchard, plantation
    - Inwardment lake, Dam, Earthen, Masonry
    - Stream, Perennial, Intermittent
    - Marsh, swamp
    - Small rapids, Small falls
    - Large rapids, Large falls



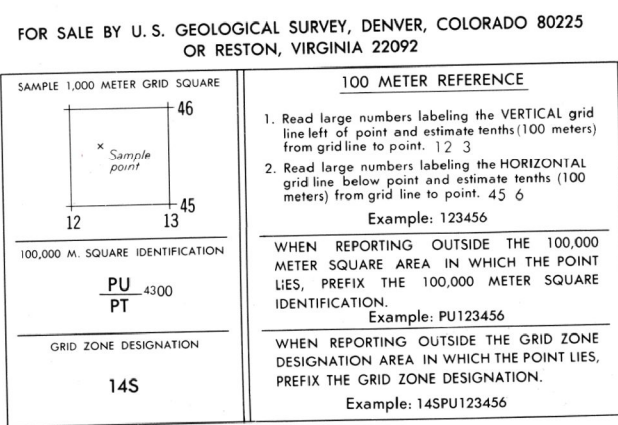
ELEVATIONS IN METERS

CONTOUR INTERVAL TO METERS

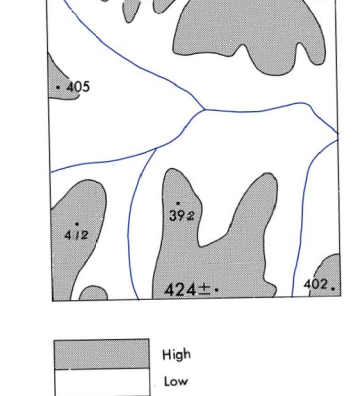
SUPPLEMENTARY CONTOURS 5 METERS

REPRINTED BY NIMA 8/02

SIPHERD ..... CLARKE 1866  
 GRID ..... 10,000 METER UTM ZONE 14 (BLACK NUMBERED LINES)  
 PROJECTION ..... 10,000 FOOT STATE GRID TIE TO KANSAS NORTH ZONE  
 VERTICAL DATUM ..... NATIONAL GEODETIC VERTICAL DATUM OF 1929  
 HORIZONTAL DATUM ..... 1927 NORTH AMERICAN DATUM  
 CONTROL BY ..... USGS AND HONOLULU  
 PREPARED BY ..... U.S. GEOLOGICAL SURVEY  
 PRINTED BY ..... DMAHTC 3-79



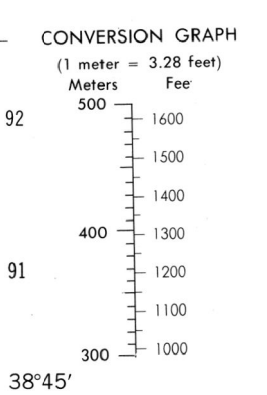
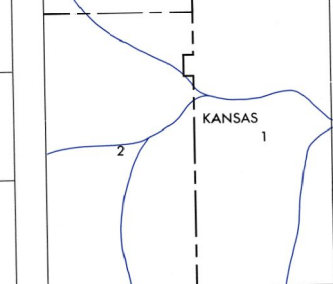
ELEVATION GUIDE



ADJOINING SHEETS

6462 II	6562 II	6662 II
6461 I	6561 IV	6661 I
6461 II	6561 III	6661 II

BOUNDARIES



GRID CONVERGENCE  
 1981 (18 MMS)  
 FOR CENTER OF SHEET

TO CONVERT A MAGNETIC AZIMUTH TO A GRID AZIMUTH  
 ADD G-M ANGLE

TO CONVERT A GRID AZIMUTH TO A MAGNETIC AZIMUTH  
 SUBTRACT G-M ANGLE

USERS SHOULD REFER TO CORRECTIONS, ADDITIONS, AND COMMENTS TO THE NGA OPERATIONAL HELP DESK: 1-800-486-6096 COMMERCIAL: 314-263-4806 (COST 480-480) OR WRITE TO: DIRECTOR, NATIONAL GEOSPATIAL-INTELLIGENCE AGENCY, ATTN: ES, MAIL STOP L-88, 4800 SANGHAM ROAD, BETHESDA, MD 20815-5002.

NSN 764301044028  
 NGA Ref No: V778X65614  
 ED. NO. 001