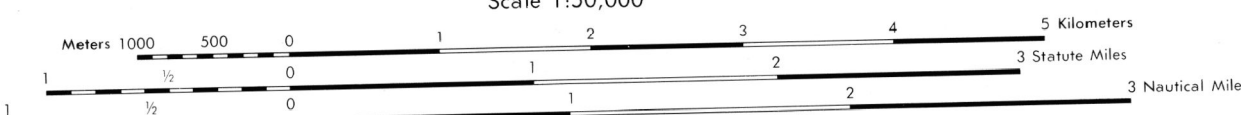


Prepared by the U.S. Geological Survey for publication by the Defense Mapping Agency Hydrographic/Topographic Center, Washington, D.C.

LEGEND

- ON THIS MAP, A LINE IS GENERALLY CONSIDERED AS BEING A MINIMUM OF 2.5 METERS (8 FEET) IN WIDTH. IN DEVELOPED AREAS, ONLY THROUGH ROADS ARE CLASSIFIED.
- ROADS**
    - Divided highway with median strip
    - Primary, all weather, hard surface
    - Secondary, all weather, hard surface
    - Light duty, all weather, hard or improved surface
    - Fair or dry weather, unimproved surface
    - Trail
    - Route markers: Interstate, Federal, State
    - Bridge: With superstructure, without superstructure
    - RAILROADS (Standard gauge 1.44m (4'8 1/2"))
    - Single track
    - Multiple track
    - Nonoperating
    - Railroad station, location known, location unknown
    - Car line
    - Railroad bridge: With superstructure, without superstructure
  - BOUNDARIES**
    - National, with monument
    - State, territory
    - County, parish
    - Civil township, town
    - Incorporated city, village, town
    - Reservation, National, State, Military
  - Buildings**
    - Structures
    - Church, School
    - Power substation
    - Windmill, Watermill
    - Well, Tank
    - Open pit mine or quarry
    - Horizontal control station
    - Bench mark, monument
    - Bench mark, non-monumented
    - Spot elevations in meters
    - Leaves, rims, dikes
    - Buffs, cliffs
    - Woodland
    - Scattered trees, scrub
    - Vineyard, Orchard, plantation
    - Intermittent lake, Dam, Earthen, Masonry
    - Swamp, Periodic, Intermittent
    - Marsh, swamp
    - Small rapids, Small falls
    - Large rapids, Large falls



ELEVATIONS IN METERS

CONTOUR INTERVAL 10 METERS  
SUPPLEMENTARY CONTOURS 5 METERS

**SPIEROID** ..... CLARK 1866  
**GRID** ..... 1,000 METER UTM ZONE 14 (BLACK NUMBERED LINES)  
**PROJECTION** ..... 10,000 FOOT STATE GRID TICS; KANSAS, NORTH ZONE  
**VERTICAL DATUM** ..... UNIVERSAL TRANSVERSE MERCATOR  
**HORIZONTAL DATUM** ..... NATIONAL GEODETIC VERTICAL DATUM OF 1929  
**CONTROL** ..... 1927 NORTH AMERICAN DATUM  
**CONTROL BY** ..... U.S. AND MEXICAN  
**PREPARED BY** ..... U.S. GEOLOGICAL SURVEY  
**DATE** ..... JANUARY 1978

FOR SALE BY U.S. GEOLOGICAL SURVEY, DENVER, COLORADO 80225  
 OR RESTON, VIRGINIA 22092

**100 METER REFERENCE**

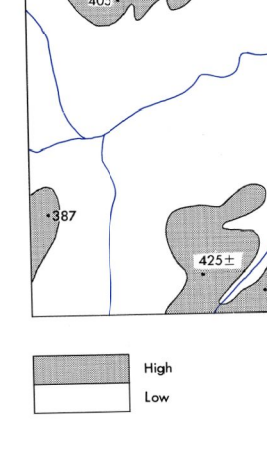
1. Read large numbers labeling the VERTICAL grid (left of grid and between 100 meters) from gridline to point. Example: 1234

2. Read large numbers labeling the HORIZONTAL gridline below grid line and estimate tenths (100 meters) from grid line to point. Example: 1234.5

**WHEN REPORTING OUTSIDE THE 100,000 METER SQUARE AREA IN WHICH THE POINT LIES, PREFIX THE 100,000 METER SQUARE IDENTIFICATION.**  
 Example: PU123456

**WHEN REPORTING OUTSIDE THE GRID ZONE DESIGNATION AREA IN WHICH THE POINT LIES, PREFIX THE GRID ZONE DESIGNATION.**  
 Example: 14SPU123456

ELEVATION GUIDE



ADJOINING SHEETS

6562 II	6562 III	6562 III
6561 IV	6561 I	6561 IV
6561 II	6561 II	6561 III

BOUNDARIES

